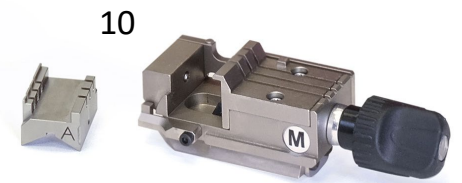
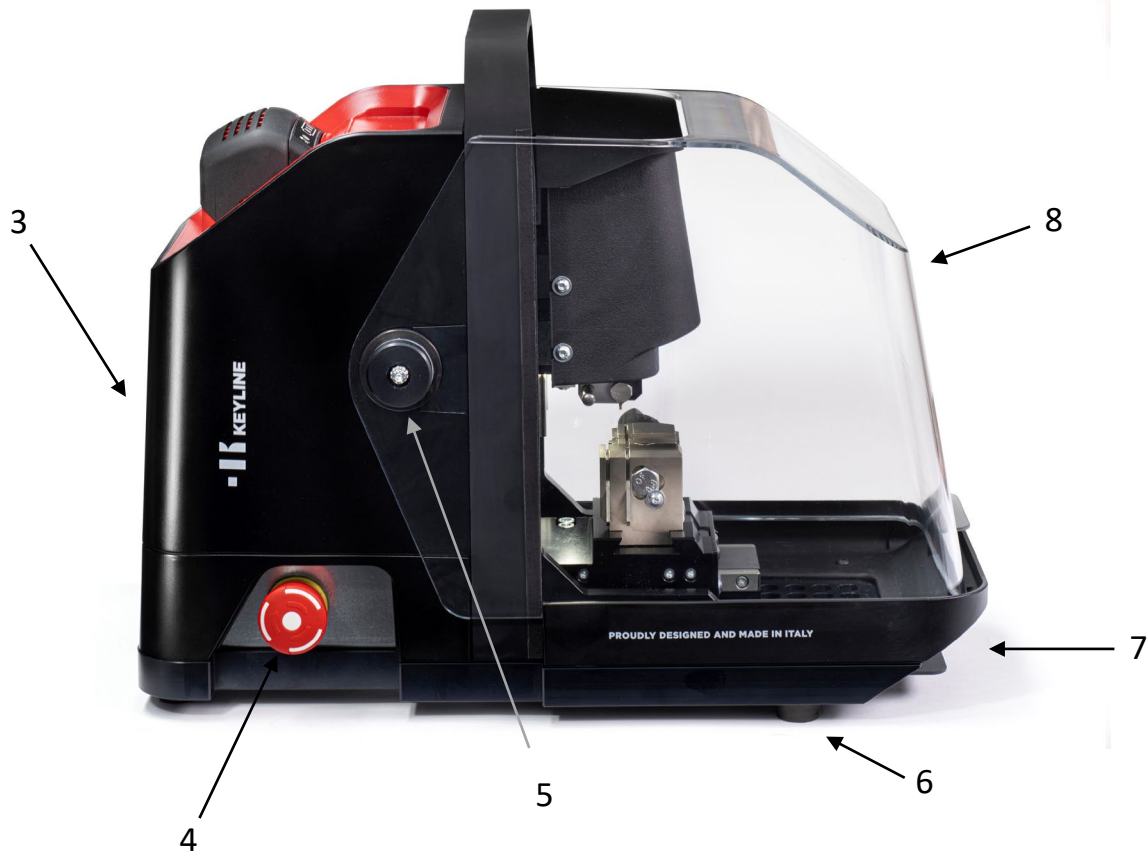


# MESSENGER

## PARTS LIST





| Number | Part Number  | Description                             |
|--------|--------------|---|
| 1      | OPZ11400B    | Bosch Battery                           |
| 2      | OPZ11715B    | Battery Quick Charger                   |
| 3      | RIC11552B    | Back Cover                              |
| 4      | RIC11580B    | Emergency Stop Switch                   |
| 5      | RIC11557B    | Clear Shield Fixing Kit/Hinges          |
| 6      | RIC05354B    | Rubber Feet (set of 4)                  |
| 7      | RIC11534B    | Chip Tray                               |
| 8      | RIC11532B    | Clear Shield                            |
| 9      | RIC10764B    | Power Supply                            |
| 10     | OPZ11088B-BS | M Clamp Kit (includes A/B side adaptor) |
| 11     | OPZ09523B    | H Clamp – 6 cut Tibbe                   |
| 12     | OPZ11463B    | Q Clamp (included)                      |
| 13     | OPZ11471B    | N Clamp (included)                      |
| 14     | OPZ10831B    | C47 Clamp                               |
| 15     | OPZ07800B    | C15 Clamp                               |
|        | OPZ11716B    | Tablet                                  |
|        | RIC11655B    | Messenger Tool Kit                      |
|        | RIC07786B    | 2mm Cutter (V037)                       |
|        | RIC05044B    | Cutter (V001)                           |
|        | RIC05264B    | Cutter (V007)                           |
|        | RIC05274B    | 1.5mm Cutter (V012)                     |
|        | RIC11577B    | Tracer (T11)                            |
|        | RIC05350B    | Calibration Tracer (T00)                |
|        | OPZ11709B    | Messenger Carrying Case                 |
|        | RIC08515B    | Magnetic Tip Stop                       |
|        | OPZ11432B    | Clamp Adaptor Plate                     |