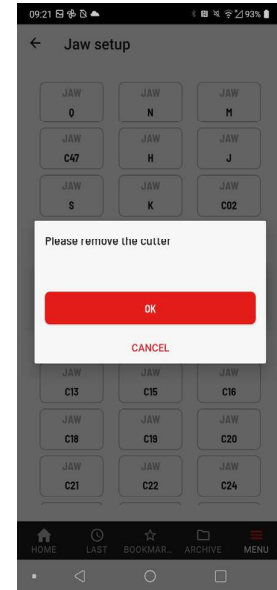
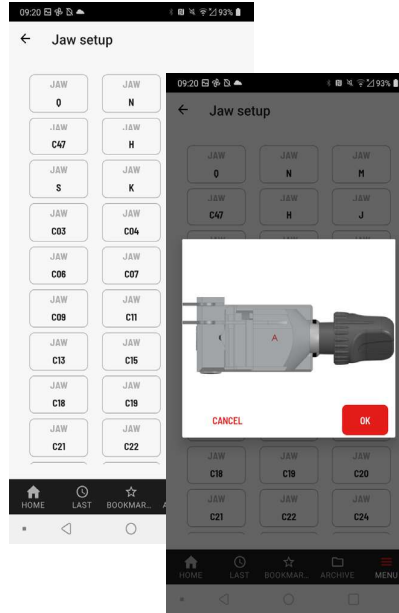
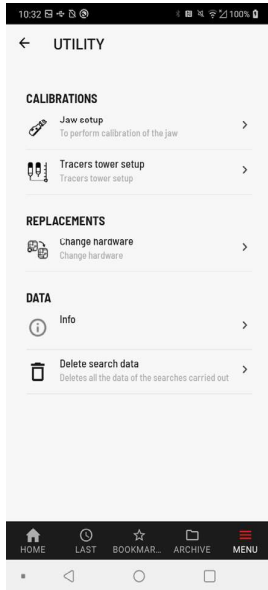


8 OPERATOR INSTRUCTIONS

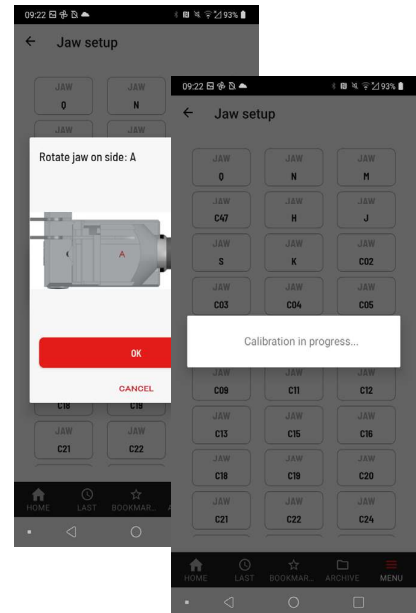
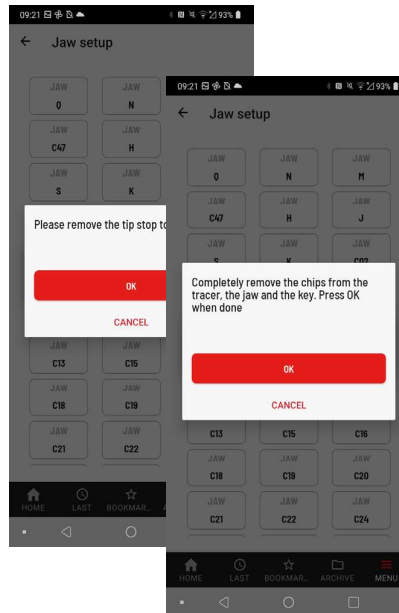
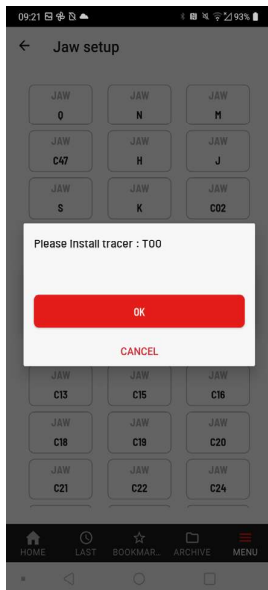
8.10.2 CALIBRATION MENU – JAW SETUP

To set up a jaw, follow the sequence of operations described below.

1. Lower the protective shield and press “Jaw setup”.
2. Select the clamp to be calibrated (e.g. Q clamp) and confirm with “OK”.
3. Raise the protective shield and remove the cutter.

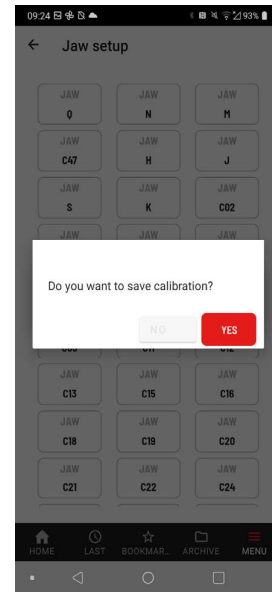
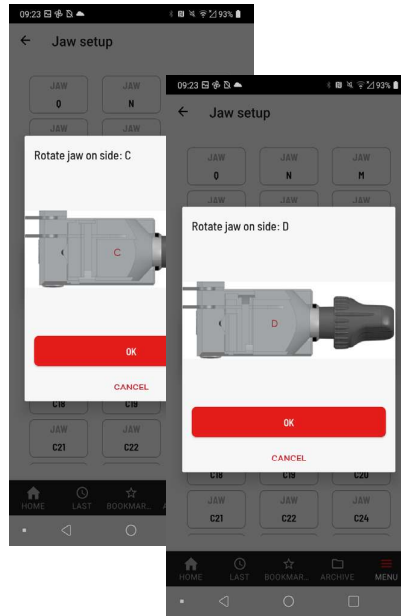
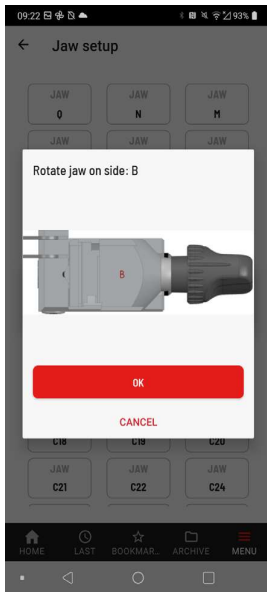


4. Install the “T00” tracer point.
5. Remove the tip stop and remove any chips from the clamp or tracer point.
6. Turn the clamp to position “A”. Lower the protective shield and press “OK” to start calibration of the clamp Side A.



8 OPERATOR INSTRUCTIONS

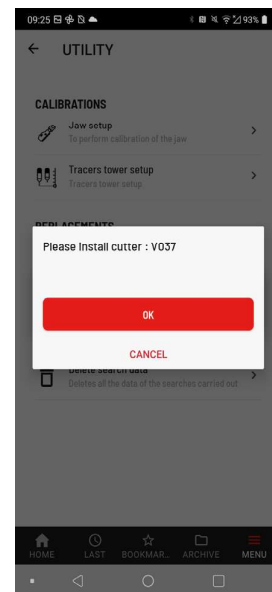
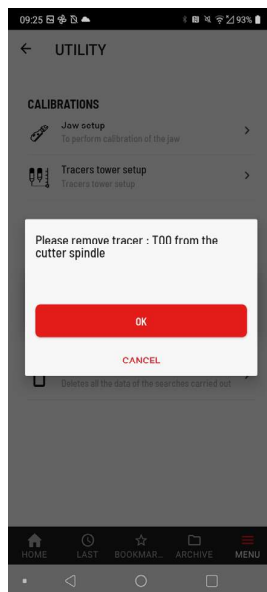
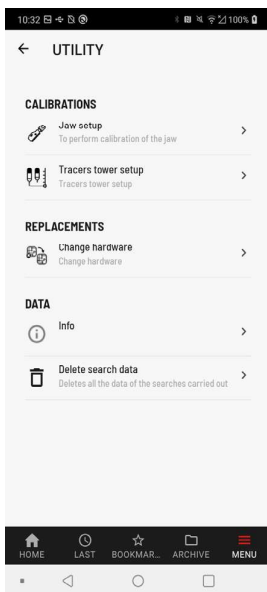
- Raise the screen and rotate the clamp to position 'B'. Lower the protective shield and press "OK" to start calibration of clamp side B.
- Repeat the calibration sequence for all sides.
- Save the new jaw setup.



8.10.3 CALIBRATION MENU – TRACERS TOWER SETUP

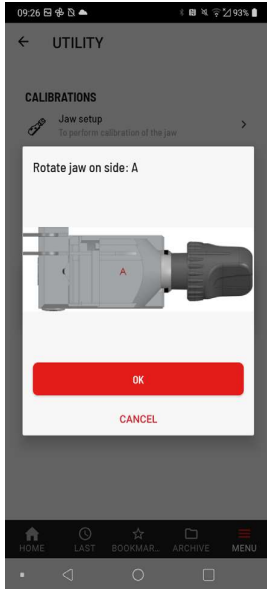
To set up a jaw, follow the sequence of operations described below.

- Lower the protective shield and press "Tracer tower setup".
- Raise the protective shield and remove the "T00" tracer point.
- Install the "V037" cutter.

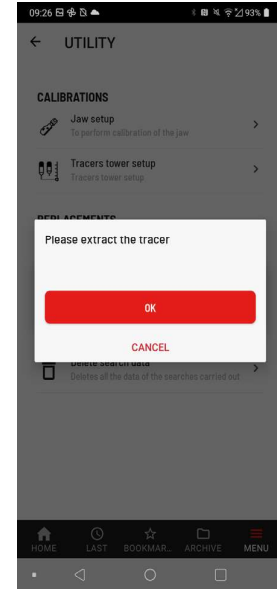
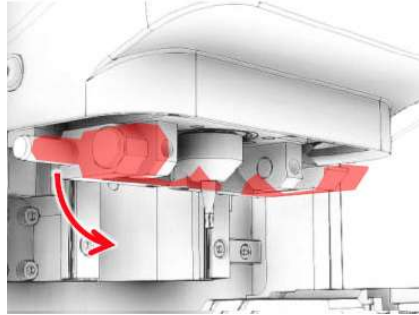


8 OPERATOR INSTRUCTIONS

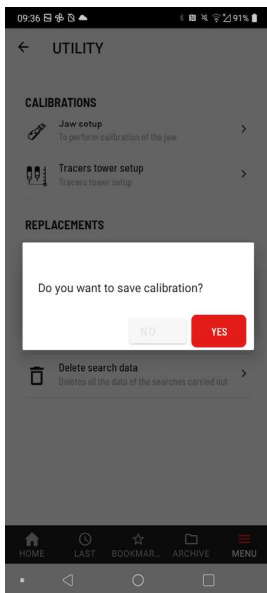
4. Turn the clamp to position “A”.



5. Lower the tracer point holder, so that the tracer point is in the position to be used. Lower the protective shield and press “OK” to start calibration.



6. Save the new tracer point setup.



7. Press OK to exit the calibration procedure.

