



**User's and Maintenance Book for the**  
**“Locksmith's Utility machine**  
**VERSA”**

**ELECTRONIC**  
**KEY DUPLICATING**  
**MACHINE**

KEYLINE S.p.A.  
Via Camillo Bianchi  
31015 Conegliano (TV)  
ITALY  
Phone: +39.0438.202511  
Fax: +39.0438.202520  
Website: [www.keyline.it](http://www.keyline.it)  
E-mail: [versa@bianchi1770.it](mailto:versa@bianchi1770.it)

Cod.: B405772FG  
Version 0.3  
Printed September 2011



Technical support:  
E-mail: [versa@bianchi1770.it](mailto:versa@bianchi1770.it)  
Phone.: +39.0438.202517

For any technical information please write to: [versa@bianchi1770.it](mailto:versa@bianchi1770.it)

Copyright of **KEYLINE S.p.A.**

**KEYLINE** reserves the rights in all countries for the translations, electronic saving, reproduction and partial or total adaptation (including microfilms and Photostats).

Creating a booklet is a complex operation and requires numerous controls text, images and the relationships between the two.

Experience suggests that it is almost impossible to publish a booklet with no mistakes.

**KEYLINE S.p.A.** will thank who may indicate possible mistakes or omissions.



Via Camillo Bianchi, 2  
31015 Conegliano (TV) - ITALY  
Tel.: +39.0438.202511 - Fax: +39.0438.202520  
Web: [www.keyline.it](http://www.keyline.it) - E-mail: [info@bianchi1770.it](mailto:info@bianchi1770.it)  
Technical Support: [decryptor@bianchi1770.it](mailto:decryptor@bianchi1770.it)

## Terms of the Guarantee

**KEYLINE S.p.A guarantees the good working condition of the machine for a period of 12 months from the date of purchase and undertakes to replace or repair the machine, or its single parts, if any operating faults are discovered at origin.**

**The guarantee does not cover any faults or damage caused by the user's negligence when using, or that is caused by repairs, replacement of single parts or maintenance that is carried out by individuals not authorised by the seller, or by any other circumstance that is independent of the seller.**

**The expense incurred in repairing or replacing the machine is the responsibility of the seller except for the expense of transport to and from the workshop. Those parts that are subject to wear, such as milling cutters, clamps, brushes etc.**

**are excluded from the guarantee. In order to use this guarantee the client undertakes, under penalty of cancellation, to communicate any operating defects covered by the guarantee to the seller within 30 days of their discovery.**



## Condizioni di Garanzia

**KEYLINE S.p.A garantisce al compratore il buon funzionamento della macchina per un periodo di 12 mesi dalla data di acquisto e si impegna a sostituire o riparare la macchina, o i singoli componenti, qualora vengano riscontrati difetti di funzionamento all'origine.**

**La garanzia non copre i difetti o i danni causati dall'utente a seguito di negligenza nell'uso, ovvero causati da riparazioni, sostituzione di singoli componenti, manutenzioni effettuate da soggetti non autorizzati dal venditore, ovvero da qualsivoglia circostanza indipendente dal fatto del venditore.**

**Le spese di riparazione o sostituzione della macchina sono a carico del venditore escluse quelle di trasporto da e per la sua officina. Sono esenti da garanzia le parti di usura, quali frese, morsetti, spazzole etc. etc. Il cliente, per avvalersi della presente garanzia, si impegna a pena di decadenza a denunciare al venditore ogni vizio di funzionamento coperto dalla stessa entro 30 giorni dall'evidenza.**



# LIST OF CONTENTS

<b>1</b>	<b>General Information</b>	<b>3</b>
1.0.1	Scope and contents of the manual	3
1.0.2	How to store the manual	3
1.0.3	Graphic symbols	4
1.1.0	Machine data plate	4
1.2.0	Working conditions	5
1.2.1	Intended use	5
1.2.2	Improper Use	5
1.3.0	Terms and Conditions of Technical Assistance	5
1.3.1	Technical service and maintenance	5
1.3.2	Manufacturer's address	5
<b>2</b>	<b>Safety instructions</b>	<b>6</b>
2.1.0	Safety legislation	6
2.1.1	General safety requirements	6
2.1.2	Protection devices	7
2.1.3	Personal protective equipment	7
2.1.4	Safety signs	7
2.2.0	Residual risks	8
<b>3</b>	<b>Machine description</b>	<b>9</b>
3.1.0	Main features	9
3.2.0	Parts- Machine	10
3.3.0	Machine accessories	12
3.4.0	Jaws and adaptors supplied with the machine	13
3.5.0	Technical features	14
3.6.0	Noise	14
<b>4</b>	<b>Packing, transport and installation</b>	<b>15</b>
4.1.0	Packaging	15
4.2.0	Transport	16
4.2.1	Unloading and handling the machine	16
4.2.2	Item checklist and detection of damage	16
4.3.0	Placing the machine	16
4.3.1	Temporary storing	16
<b>5</b>	<b>Installation</b>	<b>17</b>
5.1.0	General Instructions	17
5.1.1	Characteristics of the place of installation	17
5.1.2	Work station	17
5.2.0	Environmental conditions	17
5.2.1	Temperature and humidity	17
5.2.2	Working environment	17
5.2.3	Lighting	18
5.2.4	Vibrations	18
5.3.0	Connections	18
5.3.1	Grounding	18
<b>6</b>	<b>Start up</b>	<b>19</b>
6.1.0	Notice for machine use	19
6.1.1	Preliminary controls and setup	19
6.2.0	Operating procedure	20
6.2.1	Starting the VERSA	20
<b>7</b>	<b>Settings: Machine Data</b>	<b>21</b>
7.1.0	Main menu	22
7.2.0	Jaw setup	23
7.3.0	Tracers setup	25
7.3.1	How to replace the tools in the spindle	27
7.4.0	Test setup	28
7.5.0	Update via USB	29
7.6.0	Update via VERSA programme	30
7.6.1	WEB	31
7.6.1.1	Direct	32
7.6.1.2	Via PC	33
7.7.0	Setting	36
7.8.0	Touch	38
<b>8</b>	<b>Key Search</b>	<b>39</b>
8.1.0	Cylinder brand menu	40
8.2.0	Car brand menu	42
8.3.0	Key blank menu	44
8.4.0	Code menu	45
8.5.0	Record Number menu	46
<b>9</b>	<b>Operating Menu</b>	<b>47</b>
9.1.0	Operating menu	48
9.1.1	Engraving	49
9.1.1.1	Insert menu - Text	50
9.1.1.2	Insert menu - Logo	52
9.1.1.3	Insert menu - Counter	54
9.1.1.4	Insert menu - Key code	56
9.1.2	Engraving	58
9.1.3	Decoding	59
9.1.4	Ins. Code	60
9.1.4.1	Manual bitting modification	61
9.1.4.2	Bitting modification through code search	62

9.1.4.3 Bitting modification through new code entry ..... 63

**10 Key cutting .....64**

10.1.0 Key duplication ..... 65

**11 Maintenance .....66**

11.1.0 General information ..... 66

11.1.1 Skills of maintenance personnel ..... 66

11.1.2 Type of Maintenance ..... 67

11.2.0 Ordinary maintenance ..... 67

11.2.1 Cleaning the cutting tools ..... 67

11.2.2 Checking and cleaning the fan ..... 67

11.3.0 Complex Maintenance ..... 68

11.3.1 Replacing the tracers ..... 68

11.3.2 Replacing the Touch Screen ..... 69

11.3.3 DHCP Setup ..... 70

11.3.4 Replacing the COMPACT FLASH ..... 71

11.3.5 Inspecting and replacing the fuses ..... 72

11.4.0 Cleaning the machine ..... 73

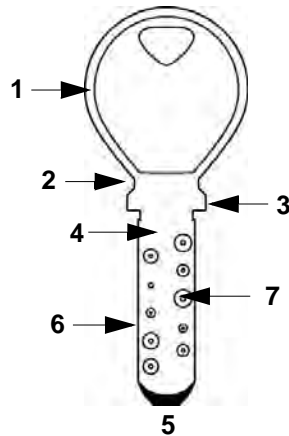
**12 Dismantling and disposal .....74**

12.0.1 Waste disposal ..... 74

12.0.2 Disposal of the packing material ..... 74

12.1.0 The WEEE directive ..... 75

**GLOSSARY**

1	BOW	
2	NECK	
3	SHOULDER	
4	STEM (SHANK)	
5	TIP	
6	BACK	
7	BITTING	
	KEY SAMPLE	The "original" key from which, through bitting, a duplicate key is obtained.
	KEY BLANK	A key with no engraving that is cut following the profile of the key sample.

## GENERAL INFORMATION

*The user's and maintenance manual of the "VERSA" for the duplication of dimple keys, inside track and outside track keys (sidewinder keys or laser keys), contains all operation instructions on the best way to use the machine while guaranteeing the safety of operators.*

### **1.0.1 SCOPE AND CONTENTS OF THE MANUAL**

*This manual provides basic information on the installation, operation and maintenance of the key duplicating machine.*

*It is addressed to machine operators and it enables them to use the machine effectively, even if they do not have any previous specific knowledge of the key duplication process.*

*This manual describes the features of the machine at the time it was marketed; therefore it may not capture later technological improvements introduced by KEYLINE S.p.A. as part of its constant endeavor to enhance the performance, ergonomics, safety and functionality of its products.*

*KEYLINE S.p.A., reserves the right not to update the manuals of previous versions of the machine. Users must follow the instructions contained in this manual scrupulously, especially those concerning safety norms and ordinary maintenance.*

### **1.0.2 HOW TO STORE THE MANUAL**

*The manual must be stored in a safe place, away from dust and moisture and it must be accessible to all users who shall consult it any time they are in doubt on how to operate the machine.*

*KEYLINE S.p.A. reserves the right to modify its production and related manuals without necessarily updating previous versions of the reference materials. The customer shall store any updated copies of the manual-or parts of it -delivered by the manufacturer as an attachment to this manual.*

*For any further information regarding this manual or the use and maintenance of the machines please contact KEYLINE S.p.A..*

*An electronic version of this manual is available, please write to [versa@bianchi1770.it](mailto:versa@bianchi1770.it).*

1.0.3 GRAPHIC SYMBOLS



- Indicates operations that can be either dangerous for people and/or disrupt the correct functioning of the machine.



- Indicates prohibited operations.

1.1.0 MACHINE DATA PLATE

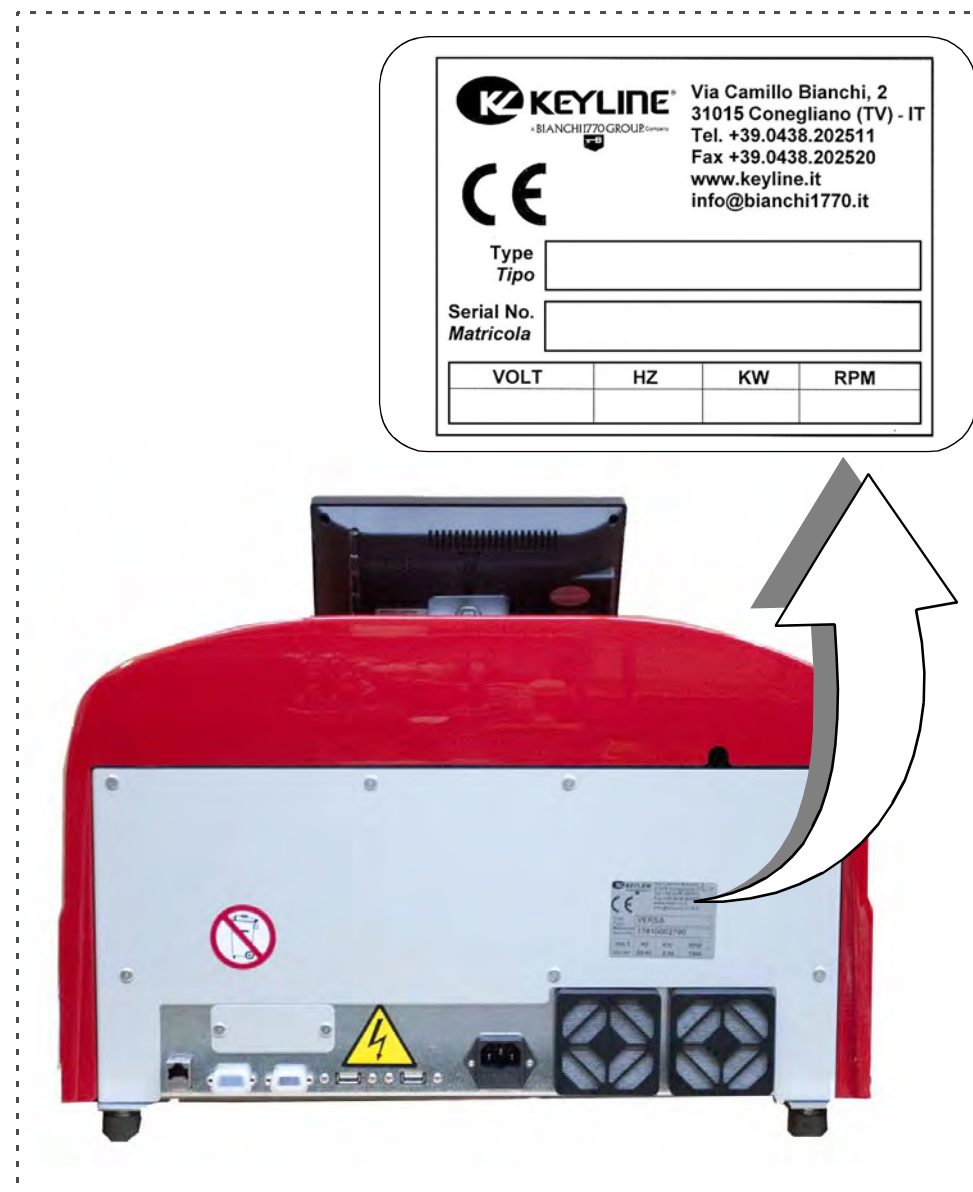
DISTRIBUTOR'S ADDRESS:

KEYLINE S.p.A.  
Via Camillo Bianchi  
31015 Conegliano (TV) - ITALY  
Tel.: +39.0438.202511  
Fax: +39.0438.202520  
Internet: www.keyline.it  
E-mail: versa@bianchi1770.it

Key duplicating machine "VERSA"  
voltage: \*  
absorbed power: \*  
absorbed current: \*

\* See "Technical features" page 14.

FIGURE 1 - LOCATION OF THE MACHINE DATA PLATE





### 1.2.0 WORKING CONDITIONS

#### 1.2.1 INTENDED USE

The key duplicating machine described in this manual has been designed for the electronic code cutting and duplication of dimple keys, inside track and outside track keys, also referred to as "sidewinder or laser keys".

#### 1.2.2 IMPROPER USE

The improper use of the machine includes using the tool to perform an operation that it was not intended for. Should this occur the manufacturer shall take no responsibility for damage to materials or persons and shall consider all warranties on the machine as void.

### 1.3.0 TERMS AND CONDITIONS OF TECHNICAL ASSISTANCE

#### 1.3.1 TECHNICAL SERVICE AND MAINTENANCE

The manufacturer shall be accountable for servicing during the warranty period and for causes related to the use of the machine.

Ordinary maintenance operations shall be performed by the personnel who use the key duplicating machine.

Any other operation (special maintenance, repairs, replacements etc..) shall be carried out by qualified personnel or contractors. KEYLINE S.p.A. is available for this assistance.

KEYLINE S.p.A. is at your disposal for:

- clarification and advice;
- delivery of spare parts;
- direct assistance through in-house technical team;
- direct assistance through authorized personnel.

Any servicing by the customer during the warranty period must be previously authorized by KEYLINE S.p.A..

The warranty will become void in case of:

- unauthorized operations;
- use of non-original spare-parts.

#### 1.3.2 MANUFACTURER'S ADDRESS

For any further information or technical service related to extraordinary maintenance or repairs, please contact:

KEYLINE S.p.A.  
Via Camillo Bianchi  
31015 Conegliano (TV) - ITALY  
Tel.: +39.0438.202511  
Fax: +39.0438.202520  
Internet: [www.keyline.it](http://www.keyline.it)  
E-mail your questions to: [versa@bianchi1770.it](mailto:versa@bianchi1770.it)

To facilitate communication please state:

- the name of the customer;
- the machine identification data contained in the machine data plate (serial number ....)
- your distributor's name,
- date of purchase.

# SAFETY INSTRUCTIONS

## 2.1.0 SAFETY LEGISLATION

The key duplicating machine and its safety devices comply with **Council Directive 2006/42/EEC** known as "Machine Directive".

This manual lists all safety instructions that the operator must follow during the installation and functioning of the machine.

Failing to respect the instructions may compromise the safety conditions envisioned during design and testing phases.

When employed for their intended use all machines marked CE comply with EU 'machine' directive 2006/42/EEC and later amendments (directives 2006/95/EEC, 2004/108/EEC, 91/368/EEC, 92/31/EEC, 93/44/EEC, 93/68/EEC, CEI EN 61029-1).

Warning: **IMPORTANT!**



**Users must be informed about the instructions contained in the following screens.**

---

**Users must carefully follow the instructions contained in this manual.**

---

## 2.1.1 GENERAL SAFETY REQUIREMENTS

Warning: **IMPORTANT!**



**Make sure that the grounding system is well connected.**

---

**Always unplug the machine (turn off the main switch) before servicing mobile parts that are electrically operated.**

---

**Do not pour water or other liquids onto electrical cables and connections.**

---

## 2.1.2 PROTECTION DEVICES

- Ground Connection (A).
- Protective eye guard (B)
- Emergency Button (C)



## 2.1.3 PERSONAL PROTECTIVE EQUIPMENT

When operating and maintaining the key cutting machine users must wear the following personal protective equipment:

- Protective clothing:  
Maintainers and key cutting machine operators must wear protective clothing that complies with the basic safety requirements currently in force.  
In case of slippery floors users must wear safety shoes with anti-slip soles.
- Safety glasses:  
During key cutting operations operators must wear eye protection (glasses or goggles).
- Gloves:  
If milling cutters are present, operators must wear protective gloves to avoid injuries.

## 2.1.4 SAFETY SIGNS

The key cutting machine bears the following safety signs.



- **Electric voltage hazard**



- **Prohibited use of vacuum cleaner and compressed air gun.**

## 2.2.0 RESIDUAL RISKS

The machine has been designed with extreme care to make it safe throughout production, transport, adjustment and maintenance operations. Nevertheless, not all risks for either operators or the environment could be eliminated, be it for technological reasons (material reliability) or management-related issues (overcomplicated operations).

Therefore, when operating the machine the following residual risks - as well as those connected with its use - must be taken into due consideration:



- **Electrical hazard (A)**  
*Since the machine is equipped with electrical devices, in case of faults there might be a risk of electrocution. The power line must be fitted with the appropriate control and protection devices (circuit breaker, thermal overload switch and differential switch).*



- **Mechanical hazard (B)**  
*The machine is fitted with milling cutters and tracer points used in key cutting operations. Operators must watch out to avoid cutting their hands when they are cutting keys or changing tools.*

FIGURE 2 - LOCATION OF RESIDUAL RISKS



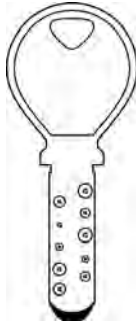
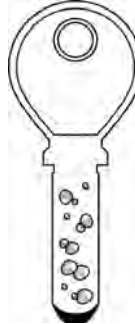
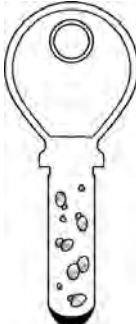
**MACHINE DESCRIPTION**

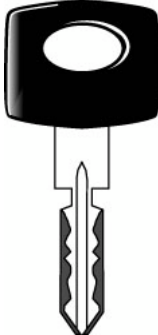
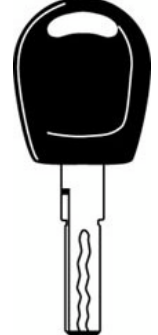

**3.1.0 MAIN FEATURES**

Professional VERSA key cutting machines are electronic devices able to facilitate the duplication of a variety of keys that require the use of fixed adaptors.

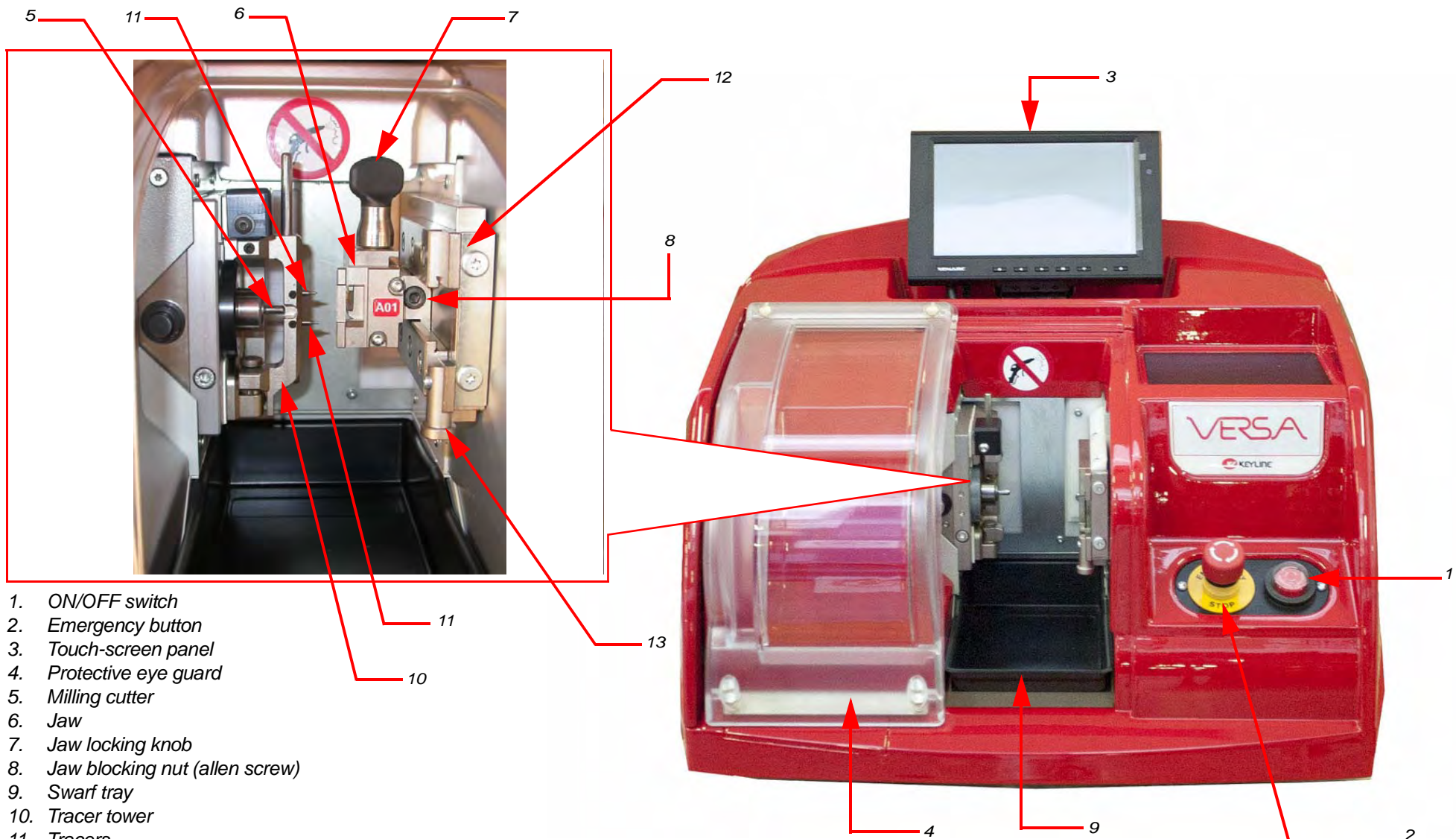
The VERSA has an aluminum body that reduces vibration while guaranteeing noiseless operation and a longer cutter life.

The key cutting machine VERSA is used to duplicate the following types of keys:

DIMPLE KEYS WITH FLAT AND ANGLE CUTS		
FLAT DIMPLE CUTS	15° ANGLE DIMPLE CUTS	45° ANGLE DIMPLE CUTS
		

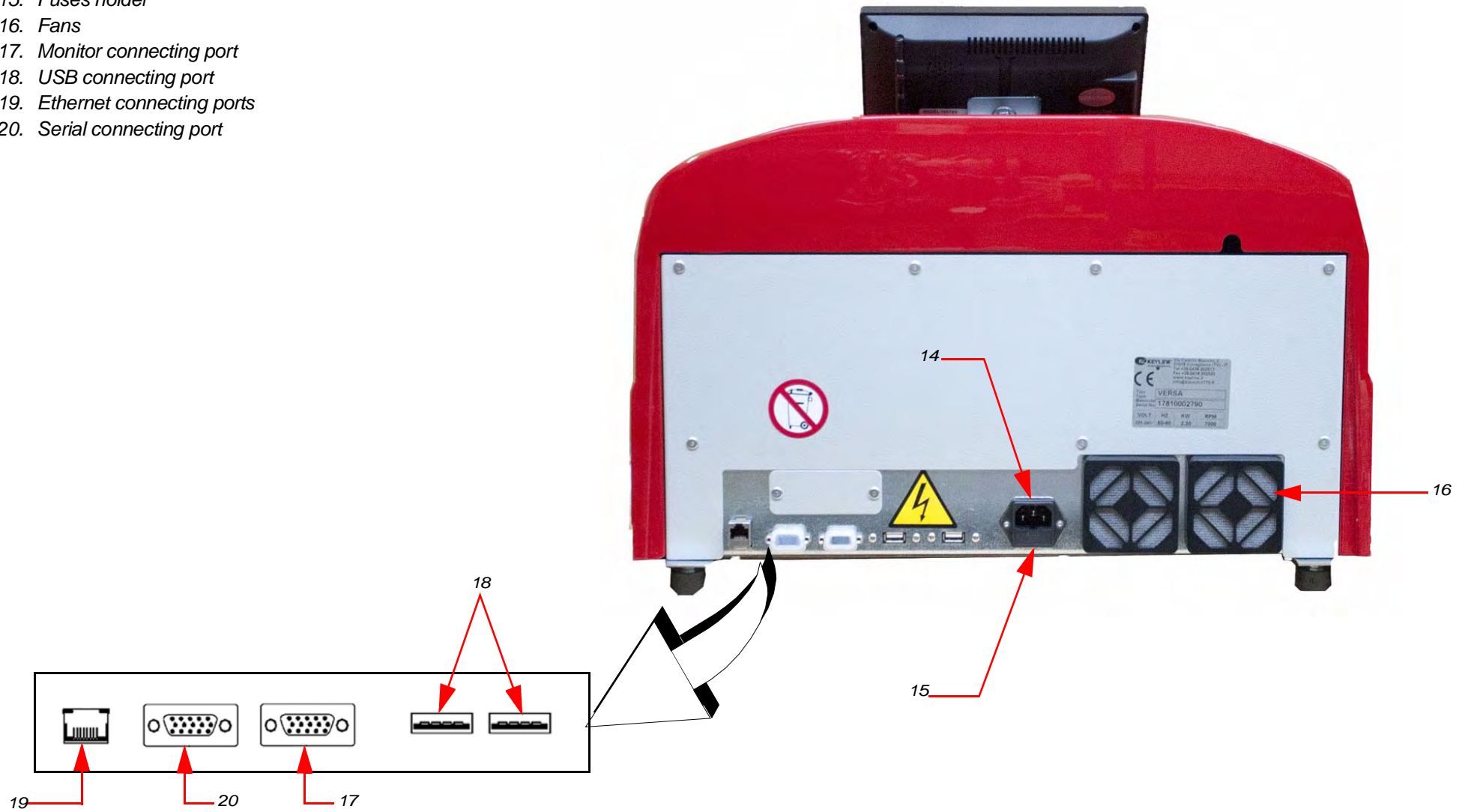
LASER-TYPE KEYS - SIDEWINDER KEYS		
4 OUTSIDE TRACKS	DOUBLE INSIDE TRACKS	DOUBLE OUTSIDE TRACKS
		

3.2.0 PARTS- MACHINE



- 1. ON/OFF switch
- 2. Emergency button
- 3. Touch-screen panel
- 4. Protective eye guard
- 5. Milling cutter
- 6. Jaw
- 7. Jaw locking knob
- 8. Jaw blocking nut (allen screw)
- 9. Swarf tray
- 10. Tracer tower
- 11. Tracers
- 12. Jaw support carriage
- 13. Tip stop

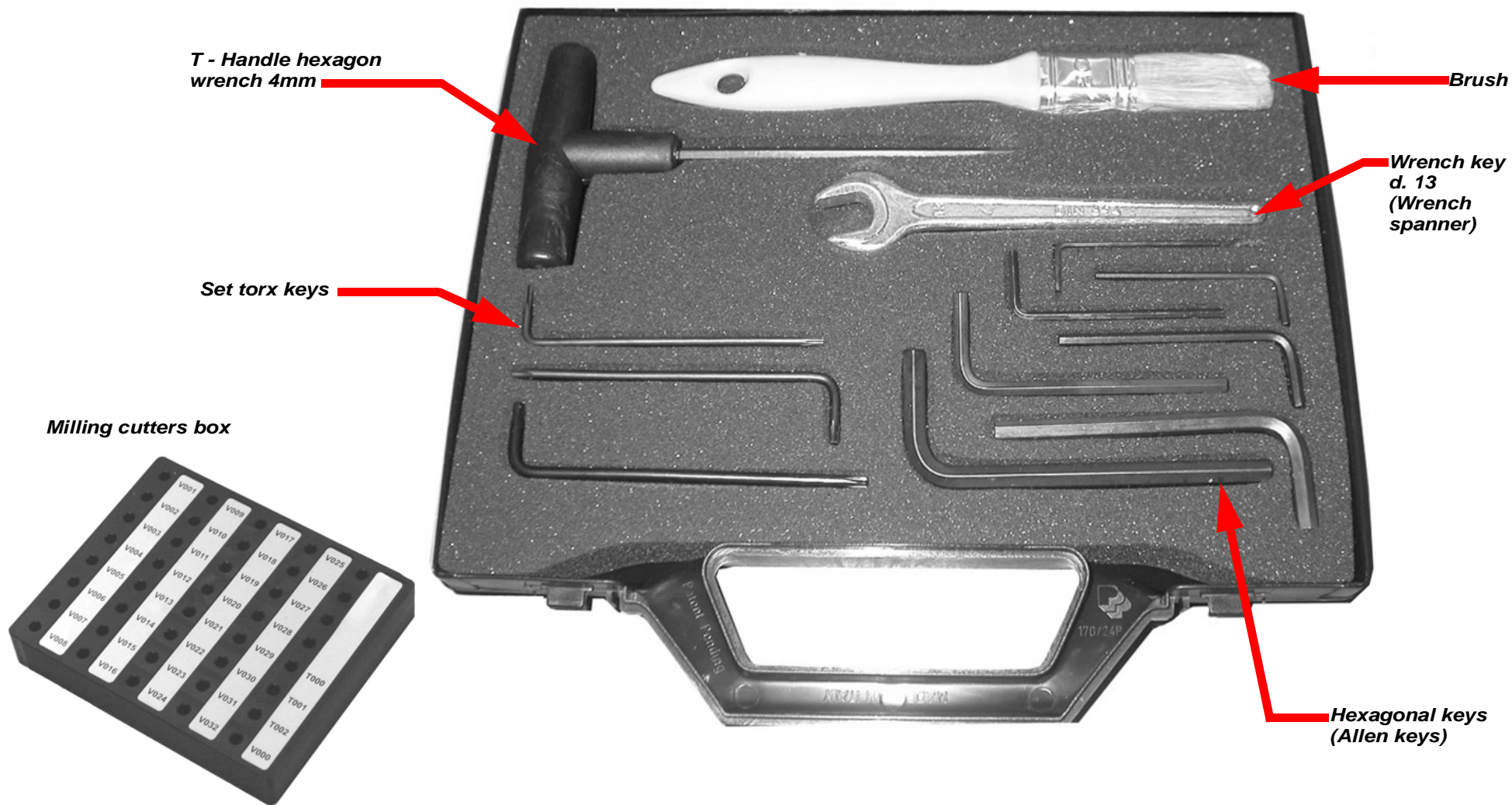
- 14. Power plug
- 15. Fuses holder
- 16. Fans
- 17. Monitor connecting port
- 18. USB connecting port
- 19. Ethernet connecting ports
- 20. Serial connecting port



**3.3.0 MACHINE ACCESSORIES**

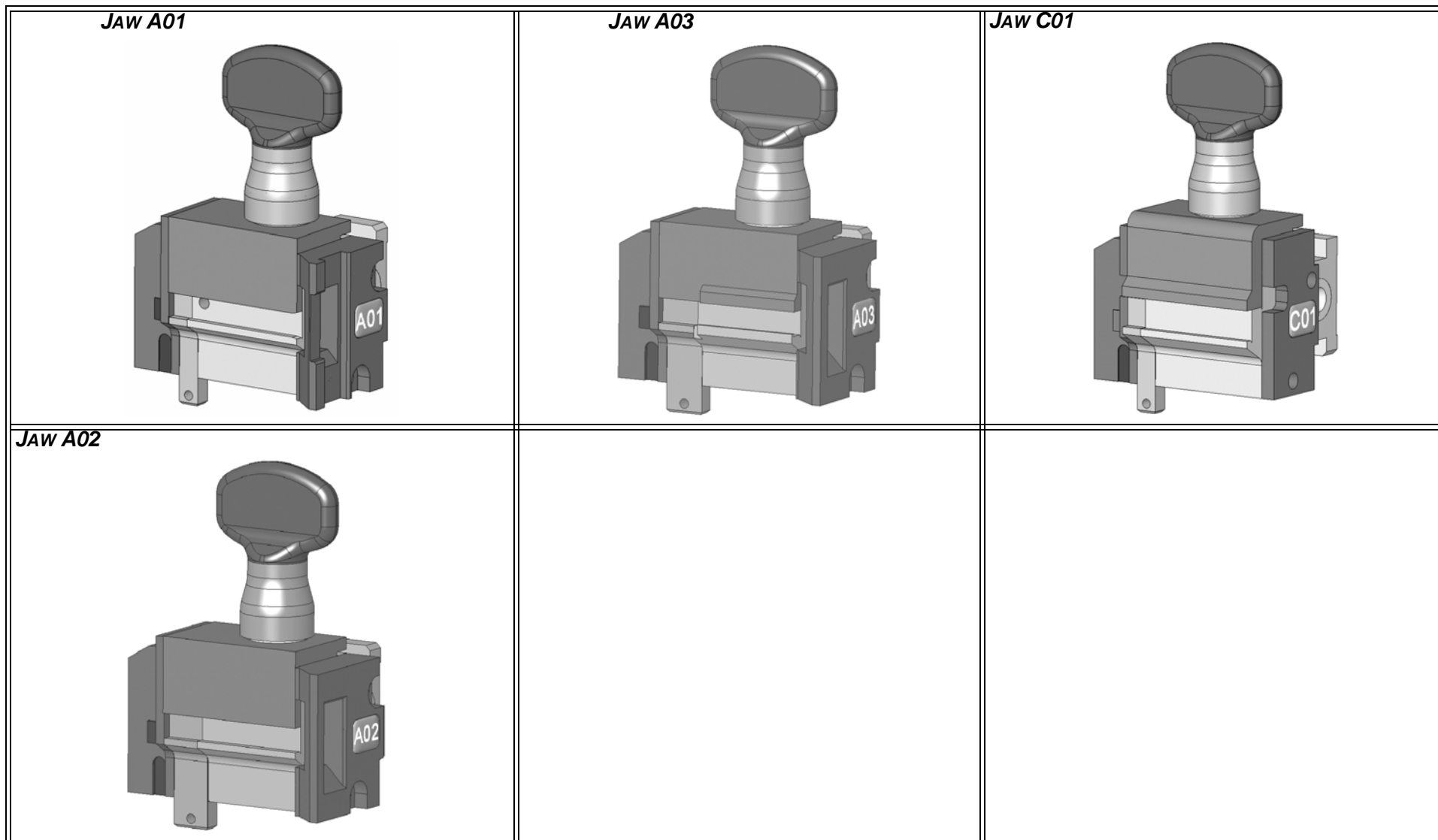
The key cutting machine is supplied with a kit of accessories and tools (shown in figure 4) used for adjusting, operating and maintaining the machine:

**FIGURE 3 - VERSA KIT OF ACCESSORIES**





**3.4.0 JAWS AND ADAPTORS SUPPLIED WITH THE MACHINE**



## 3.5.0 TECHNICAL FEATURES

<b>DIMENSIONS</b>	<b>VERSA</b>
Width	500 mm
Height	400 mm
Depth (Length)	430 mm
Weight	50 Kg
<b>TECHNICAL FEATURES</b>	<b>VERSA</b>
Power voltage	230V~50Hz/110V~60Hz
Absorption	1000 W
Motor	Brushless 3000 rpm
• Motor capacity	400 W
Type of cutter	Ing carbide
Operating temperature	0°C ÷+ 40°C
Spindle	26.000 RPM
<b>PROCESSOR</b>	<b>VERSA</b>
Type	Intel Pentium 650 MHz
Input / Output	Serial RS232, Lan 10/100 MHZ, USB client

## 3.6.0 NOISE

Acoustic pressure level $L_p$ (A)	dB(A)	81,5
Acoustic power level $L_w$ (A)	dB(A)	88,5

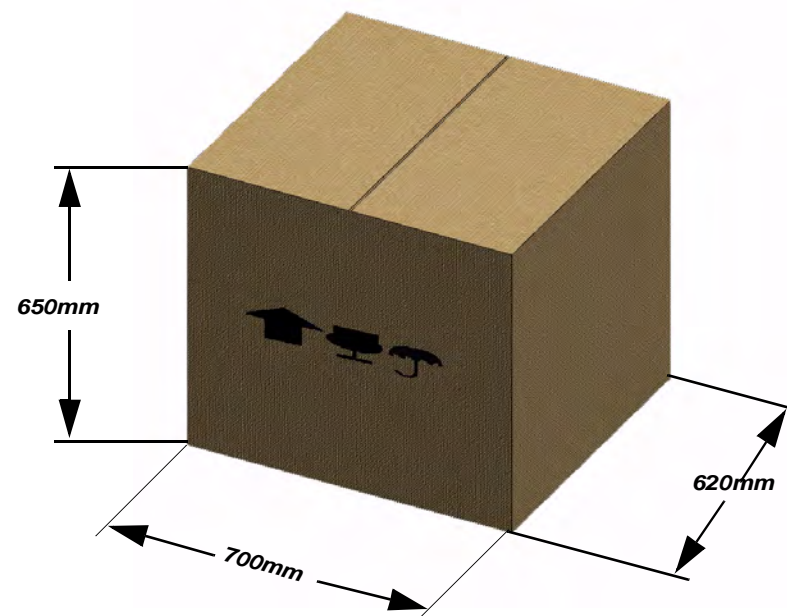
## PACKING, TRANSPORT AND INSTALLATION

### 4.1.0 PACKAGING

Prior to transport, the machine and its component parts are packed in a cardboard box and fixed in it with shaped cardboard in order to ensure a safe and damage-free handling of the machine.

The dimensions of the carton are shown below.

FIGURE 4 - PACKAGE SIZE



We recommend you to keep the packaging aside during the warranty period.

**4.2.0 TRANSPORT**

The markings on the packing materials indicate how to handle the machine during transport.

**4.2.1 UNLOADING AND HANDLING THE MACHINE**

The machine can be unloaded manually by 2 or 3 persons, or by using a handling equipment (for example a lift truck).

**Warning:**



**Be careful not to throw the machine off balance, let it tip over and fall. Even a small damage would impair its correct functioning.**

---

**4.2.2 ITEM CHECKLIST AND DETECTION OF DAMAGE**

Upon delivery, check that all items listed in the consignment note or in the packing list are in good condition. If any items are missing, the packing has been tampered with or the goods are damaged write a statement in the delivery note, sign it and have the carrier sign it too. Notify KEYLINE S.p.A. immediately and wait for the relevant instructions.

Please note that if you fail to notify us of the damage immediately you will lose your rights to damage compensation. Do not remove protective covers before the installation - unless they are damaged.

Packages that were opened to examine the contents must be handled with care to avoid damaging the machine; re-pack the parts and store them in a safe place until the installation. For more detailed information on how to handle these parts refer to the chapter "Temporary storing" page 16.

**4.3.0 PLACING THE MACHINE**

After removing the packing materials, take hold of the machine base and move the **VERSA** duplicating machine onto the workstation.

**4.3.1 TEMPORARY STORING**

If the installation of the machine does not occur immediately, store the machine in a dry and properly ventilated place.

- Apply an appropriate coating to prevent corrosion of surfaces that may suffer oxidation and corrosion.
- Check regularly for corrosion.
- Rubber parts must be protected against too low temperatures. Never store them outdoors, not even for short periods. Keep them well ventilated in case of hot temperatures.



**If the machine is stored or remains unused for long periods or if it is started a long time after delivery, gaskets or retaining rings may undergo hardening thus causing leaks or seizures.**

---

**To assure that inaccurate operations or re-assembling will not damage the equipment at the time of start-up, extreme care must be taken when performing such inspection, which shall be carried out by qualified and skilled personnel.**

---

**Warning:**

**IMPORTANT!  
Make sure that:**



**The transit of equipment, goods or people near the machine does not damage it.**

---

## INSTALLATION

### **5.1.0 GENERAL INSTRUCTIONS**

#### **5.1.1 CHARACTERISTICS OF THE PLACE OF INSTALLATION**

*The key cutting machine must be placed on a smooth level bench about 90 - 110 cm (35 - 43 Inches) high, suitable for bearing the weight of the machine and keep it horizontal, thus avoiding vibrations and stress.*

*Allow a 30 cm (12 Inches) clearance around and above the key cutting machine for correct functioning, operating and maintenance.*

#### **5.1.2 WORK STATION**

*The key cutting machine will be operated only by one operator who will stand in front of the machine and perform the following:*

- *Keep the work station tidy and free from objects that may hamper regular machine operations;*
- *Make sure that environmental conditions allow to work safely (appropriate lighting, temperature and humidity );*
- *Clean the desk from chips, scrapped and waste material;*
- *Keep unauthorized personnel out of the area.*

### **5.2.0 ENVIRONMENTAL CONDITIONS**

#### **5.2.1 TEMPERATURE AND HUMIDITY**

*The tool should be used in rooms with a temperature range of 0 and 40 °C (273 K - 313 K) and a relative humidity lower than 50 - 60%.*

#### **5.2.2 WORKING ENVIRONMENT**

*The machine must be used in a place protected from bad weather (rain, hail, snow etc.).*

Warning:



***If the machine is used in places exposed to corrosion, maintenance shall be scheduled in such a way as to prevent extreme wear of the components.***

---

Warning:



***Do not use the machine in explosive or partially explosive atmospheres or in the presence of inflammable liquids of gases.***

---

### 5.2.3 LIGHTING

*In the place of installation lighting must be appropriate, in order to allow the correct use and maintenance of the machine. The user shall be responsible for complying with the legislation in force regarding lighting.*

### 5.2.4 VIBRATIONS

*The normal use of the machine - according to the instructions of this manual does not cause vibrations that can be dangerous for people.*

## 5.3.0 CONNECTIONS

### 5.3.1 GROUNDING

*Key cutting machines VERSA have been designed in compliance with the safety legislation in force and feature appropriate safety devices to prevent work accidents.*

*In particular the machine was built with materials that:*

- *are self-extinguishing;*
- *protect against electrocution;*

*The machine must be grounded through the centralized circuit of the place of installation.*

Warning:



***Make sure that the main voltage is compatible with the machine voltage.***

---

***Make sure that the active power outlets are grounded.***

---



***Do not touch the machine when your hands and/or feet are wet or humid;***

---

***Avoid any contact with grounded plates.***

---

## START UP

### **6.1.0 NOTICE FOR MACHINE USE**

*A series of operations are illustrated below, which users must perform in order for the machine to function under optimum conditions and in complete safety at all times.*

- *Keep the power cable away from sources of heat, humidity, oil, water and sharp objects;*
- *Keep cutting tools sharpened and clean at all times to ensure better and safer performance;*
- *Check cables, belts and extensions periodically and, if they are damaged or worn, have them repaired or substituted by the authorized center service;*
- *Do not expose the machine to inclement weather;*
- *Disconnect the machines power cable before any maintenance, repairs and whenever the machine is not used for a lengthy period of time;*
- *Use only original spare parts.*

### **6.1.1 PRELIMINARY CONTROLS AND SETUP**

*Before proceeding with the start up of the machine the operator must:*

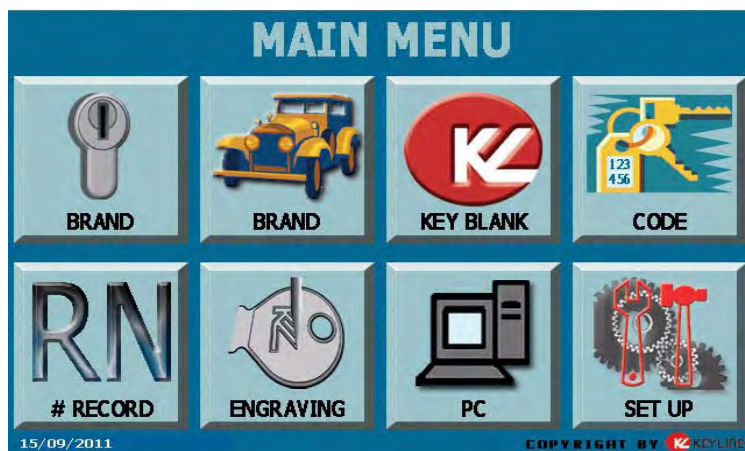
- *Check and make sure the power cable is correctly connected to the machine.*
- *Check and make sure the machine is level.*
- *Perform a general visual inspection of the machine to ensure that no components have been removed or modified.*

## 6.2.0 OPERATING PROCEDURE

### 6.2.1 STARTING THE VERSA

1. Check and make sure that the emergency button is not pressed;
2. Press the ON/OFF switch of the duplicating machine

After a delay of several seconds, the “Main Menu” screen will be displayed.



To access to the various functions it is necessary to press the screen lightly with finger or a special touch-screen stylus (DO NOT use pens or pencils).

If you have difficulty using the touch-screen, it is possible to use a standard USB mouse by connecting it to the relevant USB port placed on the rear panel of machine and if necessary configurate the screen (refer to paragraph 7.8.0. on page 38).

#### OPTIONS DISPLAYED:

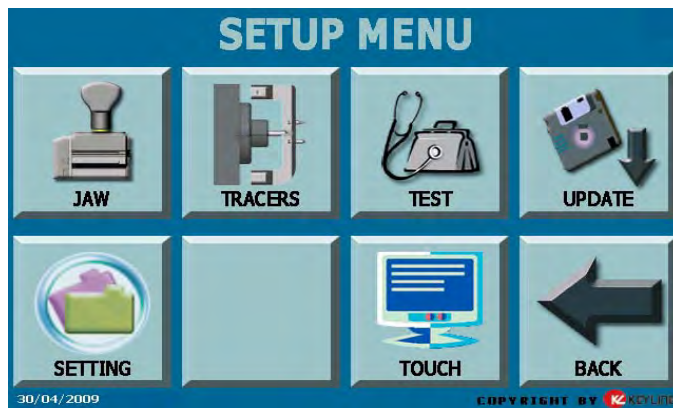
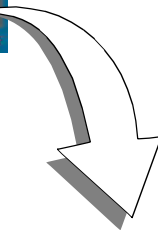
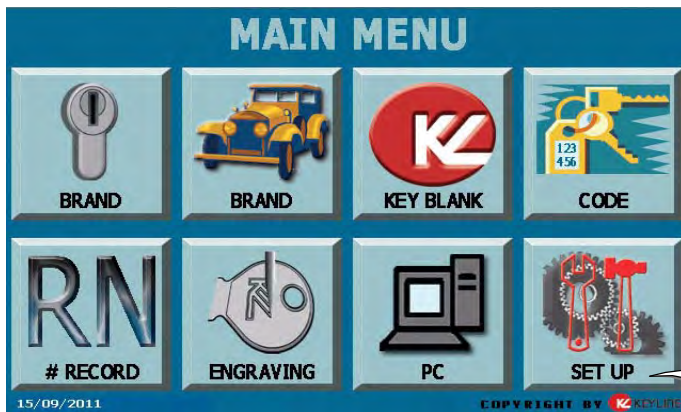
- **CYLINDER BRAND:** to access the menu that allows to search by the cylinder brand the key to be cut
- **CAR BRAND:** to access the menu that allows to search by the car brand the key to be cut
- **KEY BLANK:** to access the menu that allows to search the key to be cut into the Keyline keys list
- **CODE:** to access the menu that allows to decode the sample by code
- **# RECORD:** to access the menu that allows to search the type of key to be duplicated by entering the system number of the key
- **ENGRAVING:** to access the menu that allows to select the head of the key to be engraved into the system list
- **PC:** to access the menu that allows to connect a Personal Computer to the machine
- **SET UP:** to access the setup menu of the key cutting machine



*This section contains a description of the procedures required to set the parameters for utilization of the duplicating machine and instructions on how to consult and manage machine data.*

## SETTINGS: MACHINE DATA

7.1.0 MAIN MENU

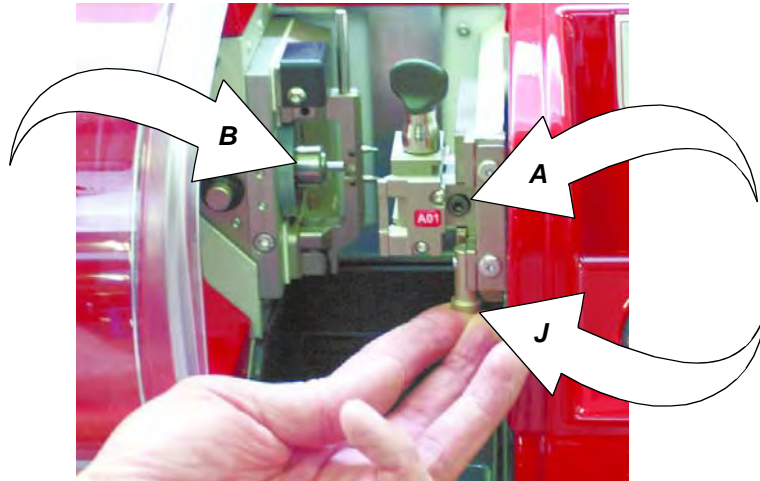


From the main Menu it is possible to access the Setup Menu of key duplicating machine management, control and use.

OPTIONS DISPLAYED:

- **JAW:** to access the menu that allows to select the jaw to be adjusted
- **TRACERS:** to access the menu that allows to adjust the settings of tracers and milling cutters axes
- **TEST:** to access the menu that allows to automatically test the machine main units
- **UPDATE:** to update management software
- **SETTING:** to display and change some information fields of machine and management software
- **BACK:** to return to the main menu.
- **TOUCH:** to access the menu that allows to perform the touch-screen calibration.

## 7.2.0 JAW SETUP



This operation must be carried out after a new jaw will be used to replace an existing one or whenever a new jaw is installed on the machine before using it. This function permits to start the automatic jaw adjustment.

### SAFETY WARNING



During the jaw replacement operations it is important not to exceed pressure to the tools (templates, hexagonal keys, etc.), to avoid to damage the machine components.

### HOW TO ACCESS THE SCREEN:

- From the "SETUP" page by selecting the "JAW" key.

### HOW TO REPLACE THE JAW:

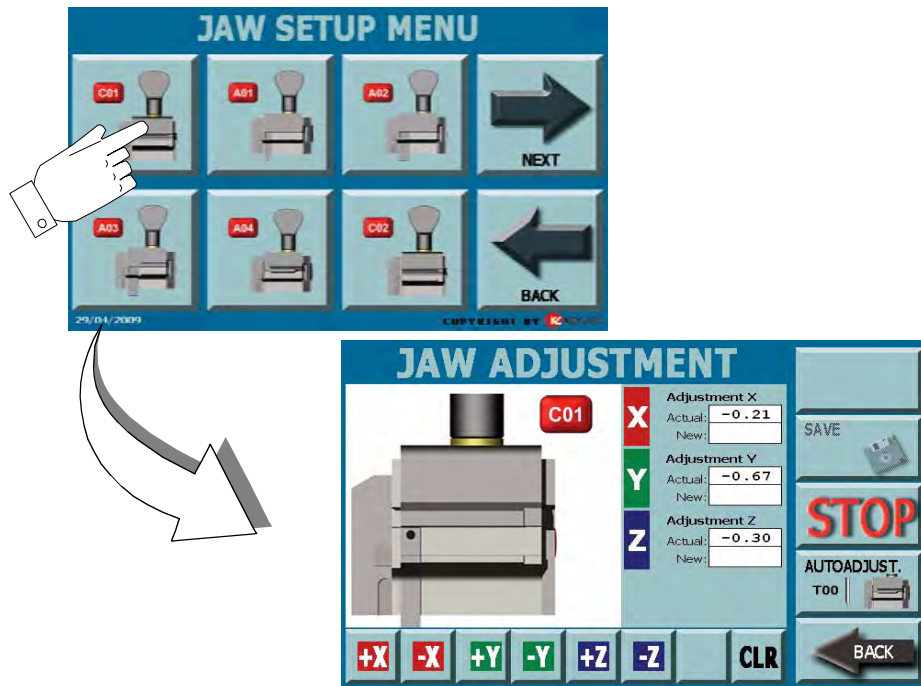
- remove the jaw by loosening the fixing nut "A" and by removing it from its seat (pull up the jaw rest stop as shown in Ref. J);
- lift the jaw rest stop, insert the new jaw and then secure it by means of the relevant nut;

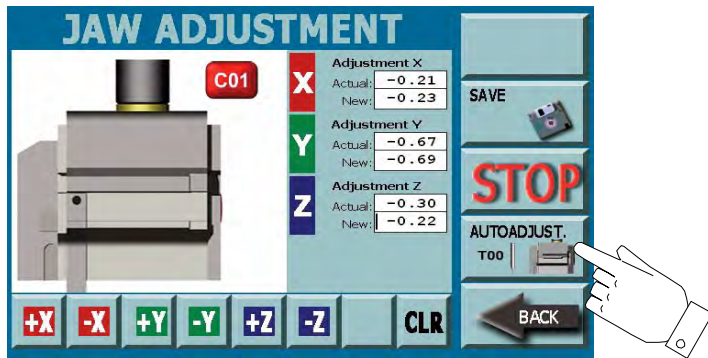
### ADJUSTMENT PROCEDURE:

- from the display select the icon of the jaw that has been installed (e.g. JAW "C01");
- a screen will appear showing the jaw and the jaw dimensions will appear into the "ACTUAL" field;
- it is possible to modify the axes (X\_Y\_Z) by means of the relevant buttons (+ or -). The new value will appear into the "NEW" fields;

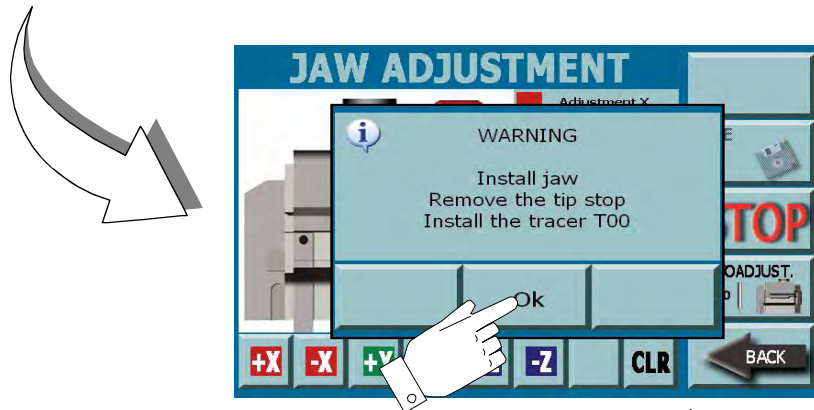
**Note:** only trained personnel can manually modify the axes. The following auto adjustment procedure is sufficient for machine normal use.

- press the "CLR" key to cancel entered values;

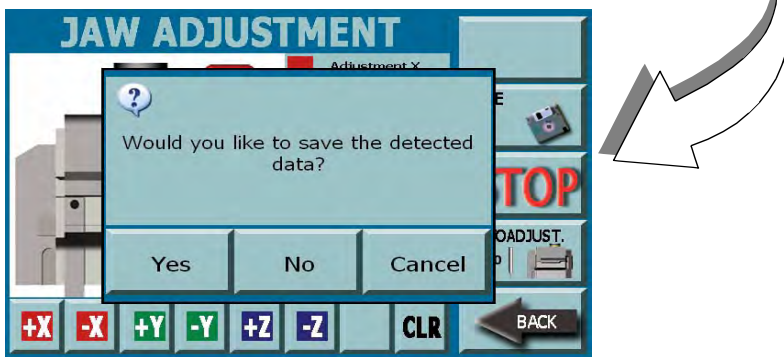




- press the "AUTOADJUST." button to start the jaw setting procedure.



- a window appears: the pin (B) removal, the tracer T00 insertion and the tip stop/ removal are requested;
- insert the tracer as indicated in paragraph 7.3.1. on page 27 "Tracers set up";
- press the OK key to start the adjustment procedure;
- press the "STOP" key if you want to stop the adjustment procedure.



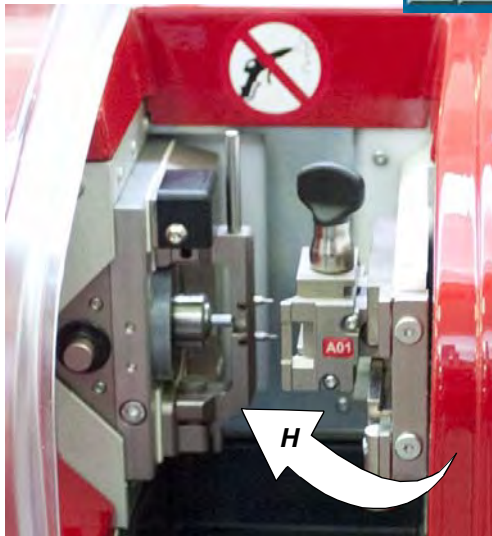
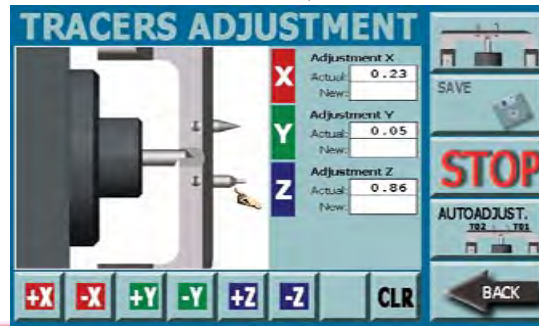
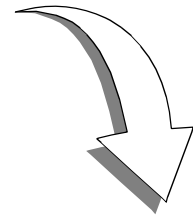
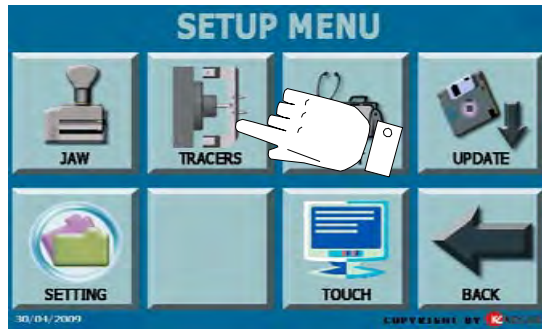
**HOW TO SAVE DATA:**

- at the end of the adjustment the system requires the data saving:
  - press YES to confirm,
  - press No to eliminate modifications,
  - press Cancel to return to the guided procedure.

**HOW TO EXIT FROM THE SCREEN:**

- Press the "BACK" key to return to the previous page

## 7.3.0 TRACERS SETUP



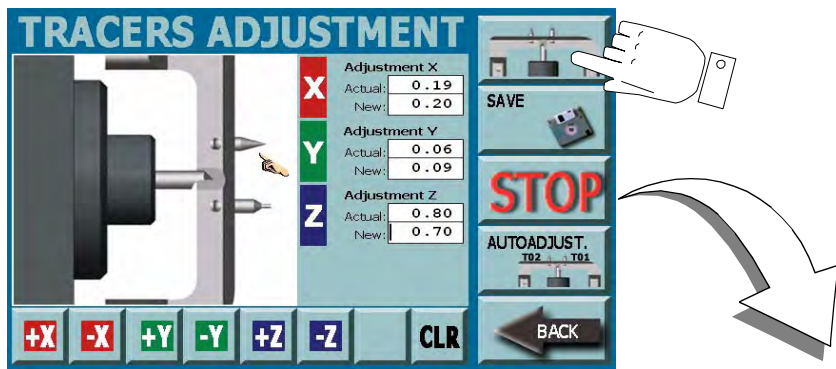
*This operation must be carried out after a tracer point is replaced.  
This function permits to start the automatic tracer points adjustment.*

### HOW TO ACCESS THE SCREEN:

- From the "SETUP" page by selecting the "TRACERS" key.

### ADJUSTMENT PROCEDURE:

- Turn the tracers tower "H" toward the operator ;



- Select the relevant icon on the display (on the top right) to choose one of two tracers;
- the parameters set for selected tracer point appear into the “ACTUAL” field;
- it is possible to modify the axes (X\_Y\_Z) by means of the relevant buttons ( + or - ). The new value will appear into the “NEW” field;
- press the “CLR” key to cancel entered values;
- select again the TRACERS icon (on the top right) to go to the axes adjustment of the second tracer point;

**Note:** only trained personnel can manually modify the axes. The following auto adjustment procedure is sufficient for machine normal use.

- press the “AUTOADJUST.” button to start the tracer points setting procedure.

**Warning:**



**it is necessary that the jaw "C01" is installed in its compartment. When the window requesting the installation appears, insert it as indicated in paragraph 7.2.0. on page 23 “HOW TO REPLACE THE JAW”. Make sure that the C01 jaw is completely closed and press OK to start the adjustment procedure.**

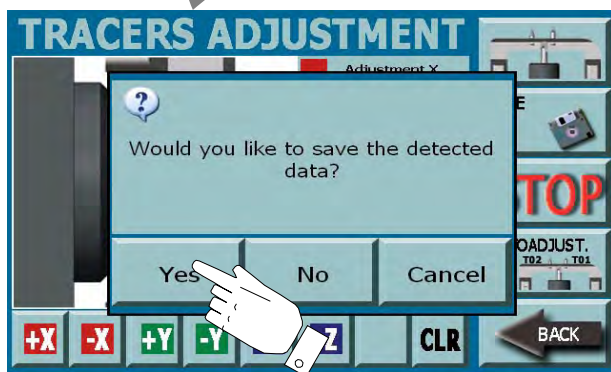
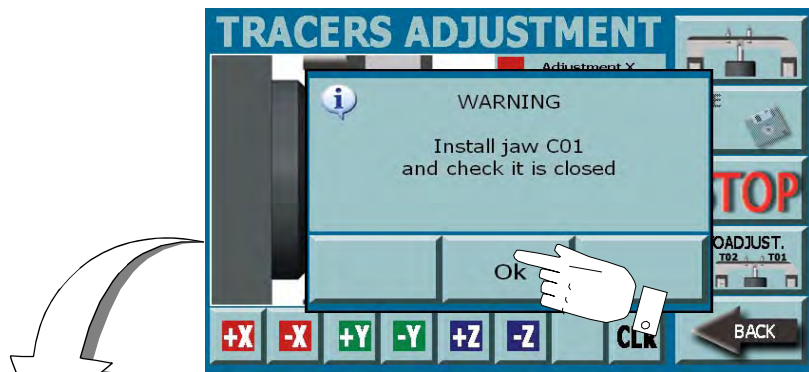
- press the “STOP” key if you want to stop the adjustment procedure.

**HOW TO SAVE DATA:**

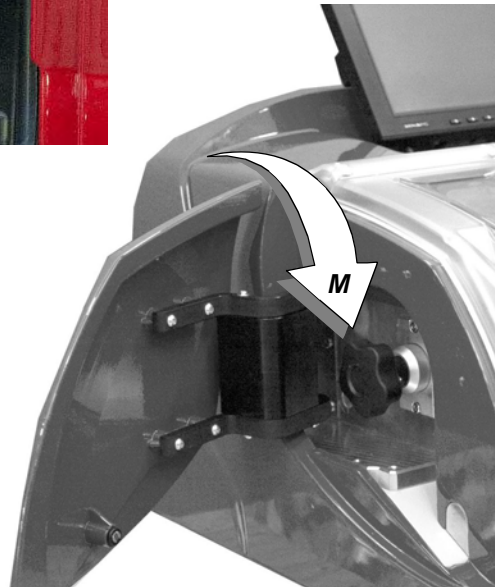
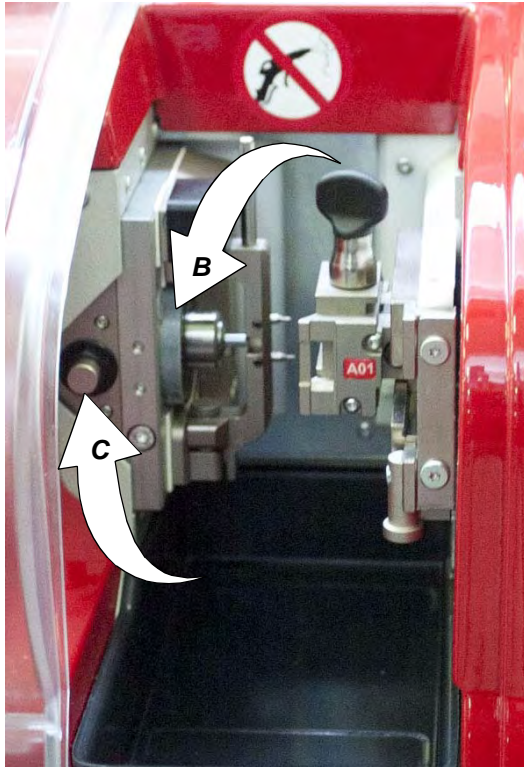
- at the end of the adjustment the system requires the data saving:
  - press YES to confirm,
  - press No to eliminate modifications,
  - press Cancel to return to the guided procedure.

**HOW TO EXIT FROM THE SCREEN:**

- Press the "BACK" key to return to the previous page

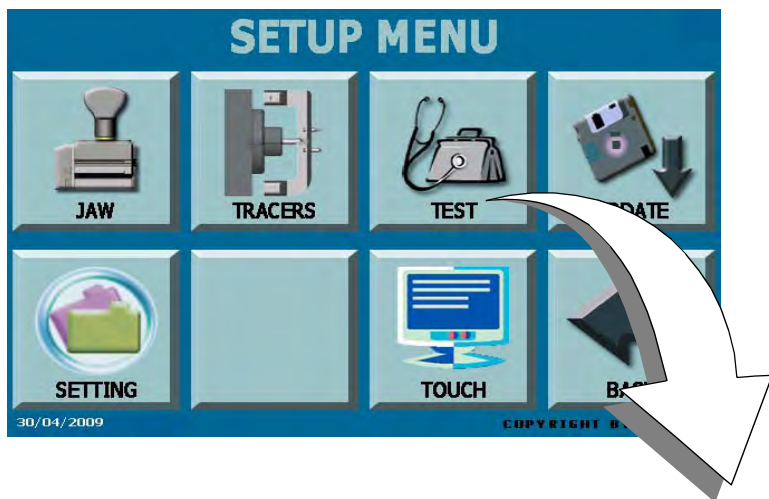


### 7.3.1 HOW TO REPLACE THE TOOLS IN THE SPINDLE



- Open the lateral panel placed on the left part of machine;
- Keep pressing the "C" button, press and turn counterclockwise the "M" handle to loosen the chuck spindle "B";
- Remove the tool from its seat;
- Keep pressing the "C" button, insert the new tool or the new tracer all the way in until it stops, then fix it by pressing and turning clockwise the handle on the left lateral panel.

7.4.0 TEST SETUP



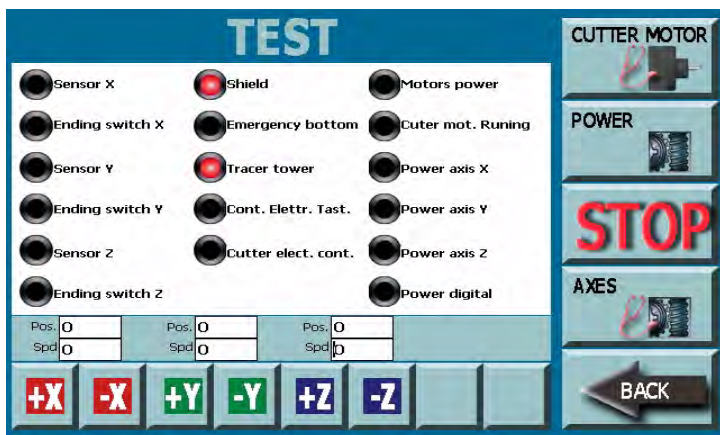
The TEST menu permits to check the functioning status of machine main parts. In case of a device anomaly, you may be request from our Technical personnel to access this menu to diagnose the anomaly.

OPTIONS:

- **CUTTER MOTOR:** to start the milling cutter test procedure
- **POWER:** to enable or disable the motors power supply during test
- **AXES:** to start the automatic control for axes functionality. Press the "STOP" key to stop the test at any moment.

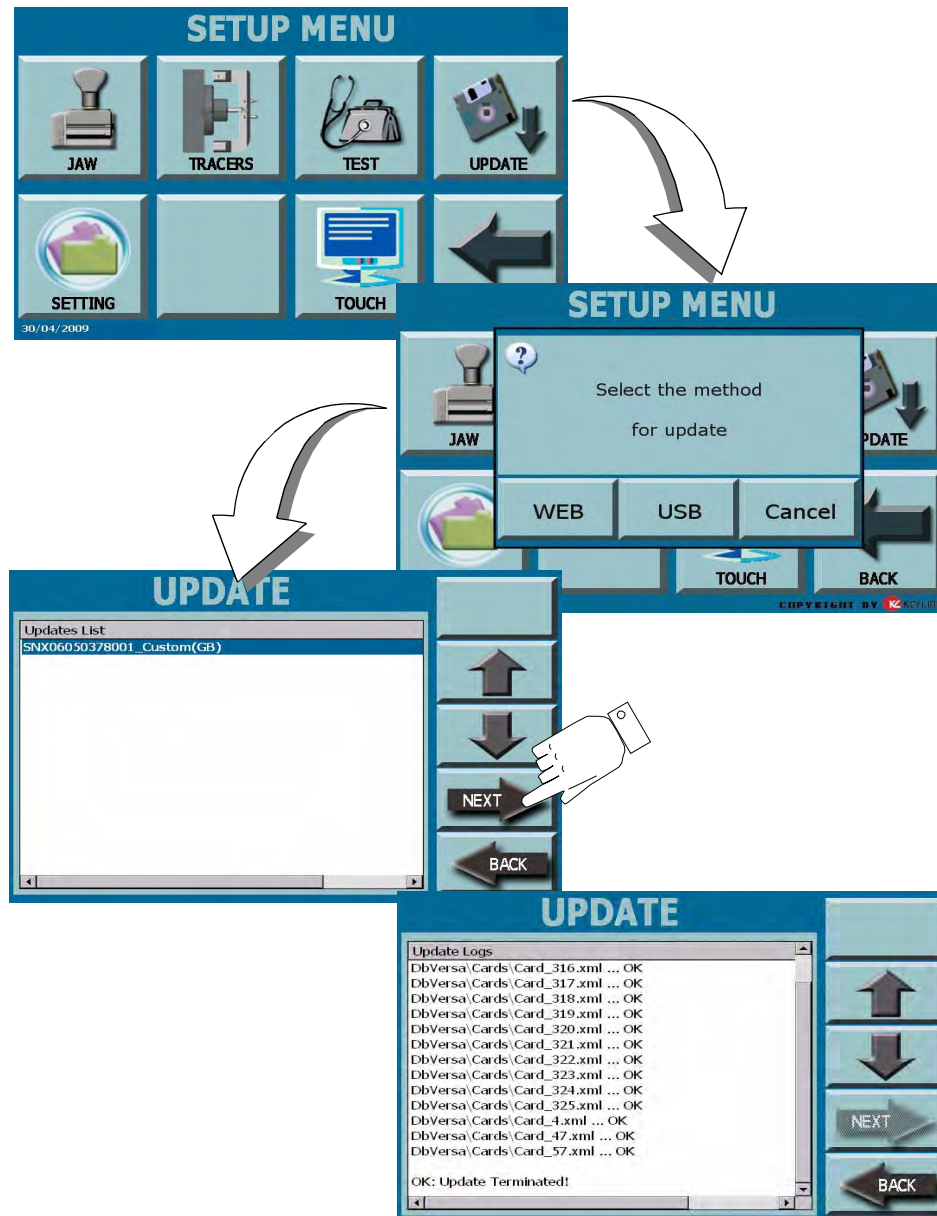
**Warning:** remove the jaw from the machine before starting this process.

- **BACK:** to return to the previous page.
- **+/-X:** press "+X" to move forward or "-X" to move backward the X axe.
- **+/-Y:** press "+Y" to move forward or "-Y" to move backward the Y axe.
- **+/-Z:** press "+Z" to move forward or "-Z" to move backward the Z axe.



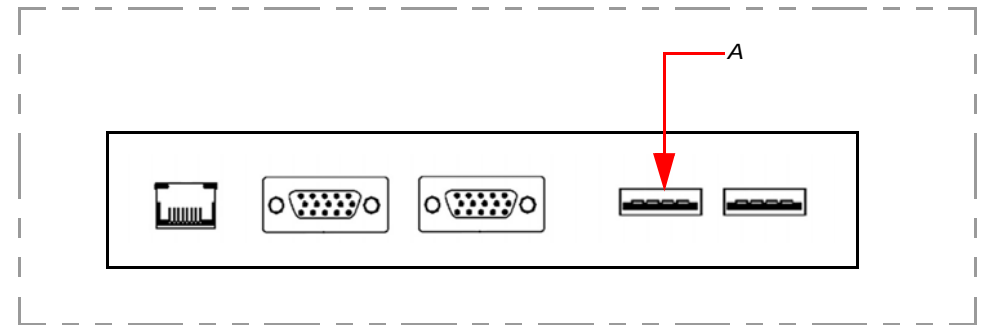


## 7.5.0 UPDATE VIA USB



From the Setup Menu by selecting the “UPDATE” key it is possible to update the machine management software.

- press the UPDATE key from the Setup menu;
- Insert the USB device into the machine and select USB from the dialogue box;
- the USB pen containing update data must be inserted into the USB port (A) placed on the machine rear part;
- the update will start, please wait until the message “OK: UPDATE TERMINATED” appears;



**Important:** wait until the update process is completed, before performing any other operation.

- at the end of the operation press the BACK button to return to the Setup Menu.

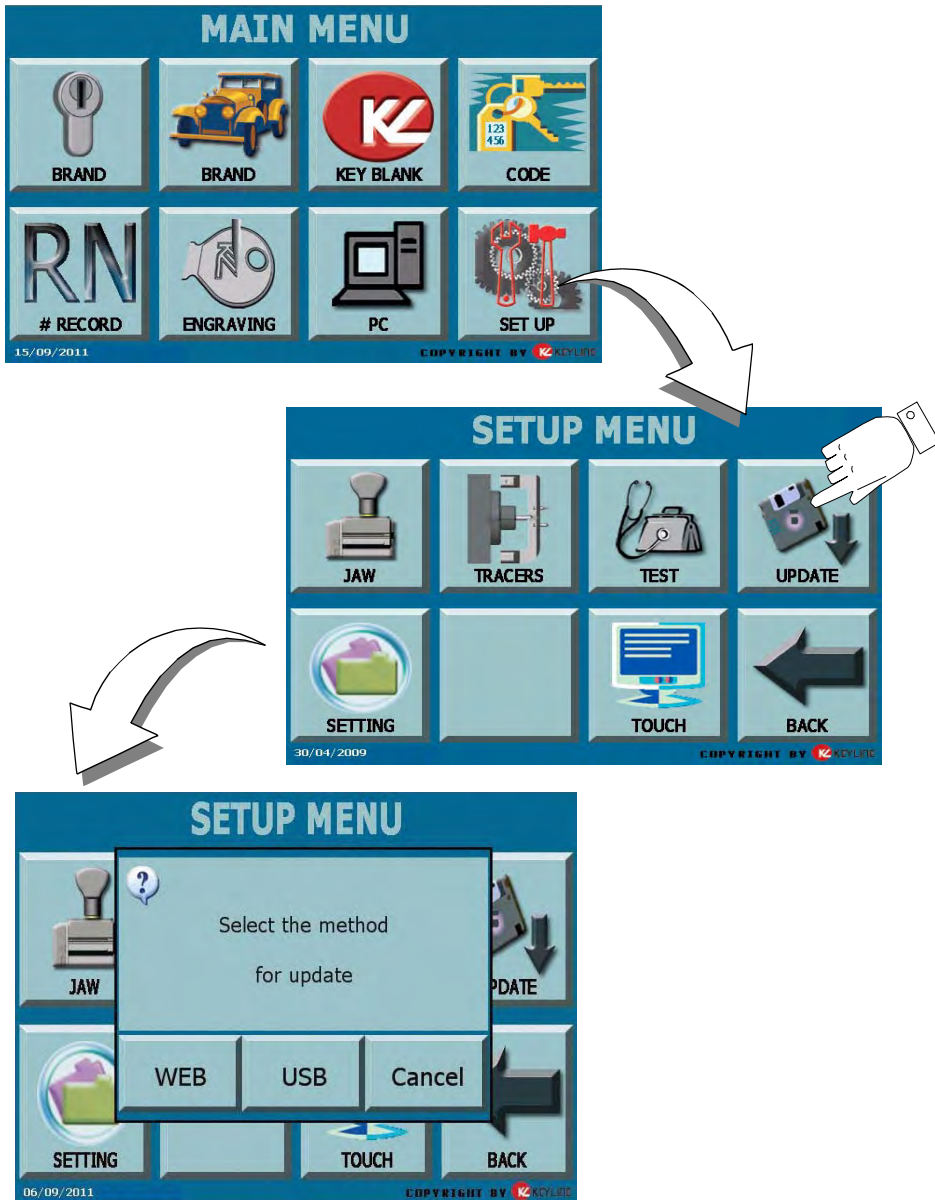
**Note:** The update through USB flash drive is one of the machine's optional functions, as it requires a dedicated update package for the specific machine and for special needs. Such a package can only be created by KeyLine.

7.6.0 UPDATE VIA VERSA PROGRAMME

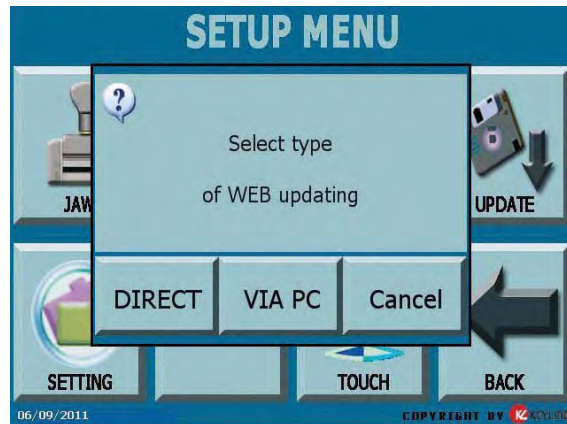
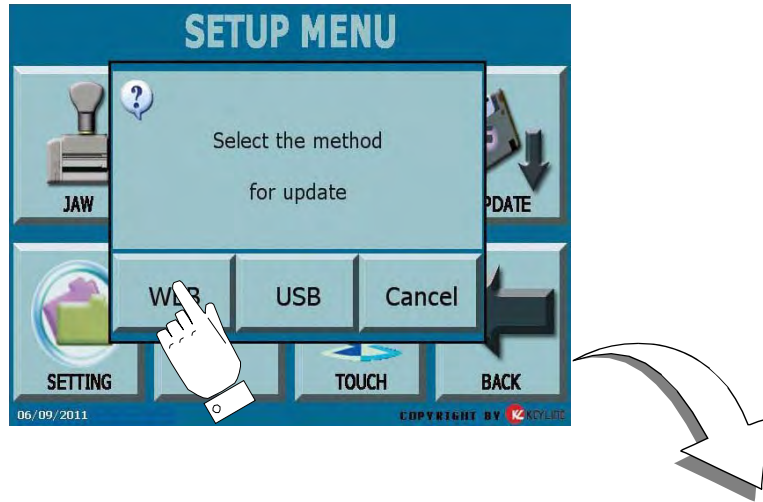
It is possible to update the machine through the Versa graphic interface. From the SETTINGS menu, select "UPDATES" and proceed as follows.

COME PROCEDERE:

- from the "SETTINGS MENU" page, press the "UPDATES" button.
  - a window appears, from which the operator shall choose:
    - **WEB:** to proceed with the online software and database update, through the "Keyonline" service.
- Note: The WEB update is possible only if the machine was previously registered for the Keyonline service. Contact KeyLine for registration.
- **USB:** to proceed with the software and database update, taking the data from a USB flash drive.
  - **CANCEL:** to close the dialogue box and go back to the previous menu..



## 7.6.1 WEB



*It is necessary to wait until the end of the process!*

### HOW TO PROCEED:

At the end of the files control, a message shall ask the user to choose the mode of update through Keyonline:

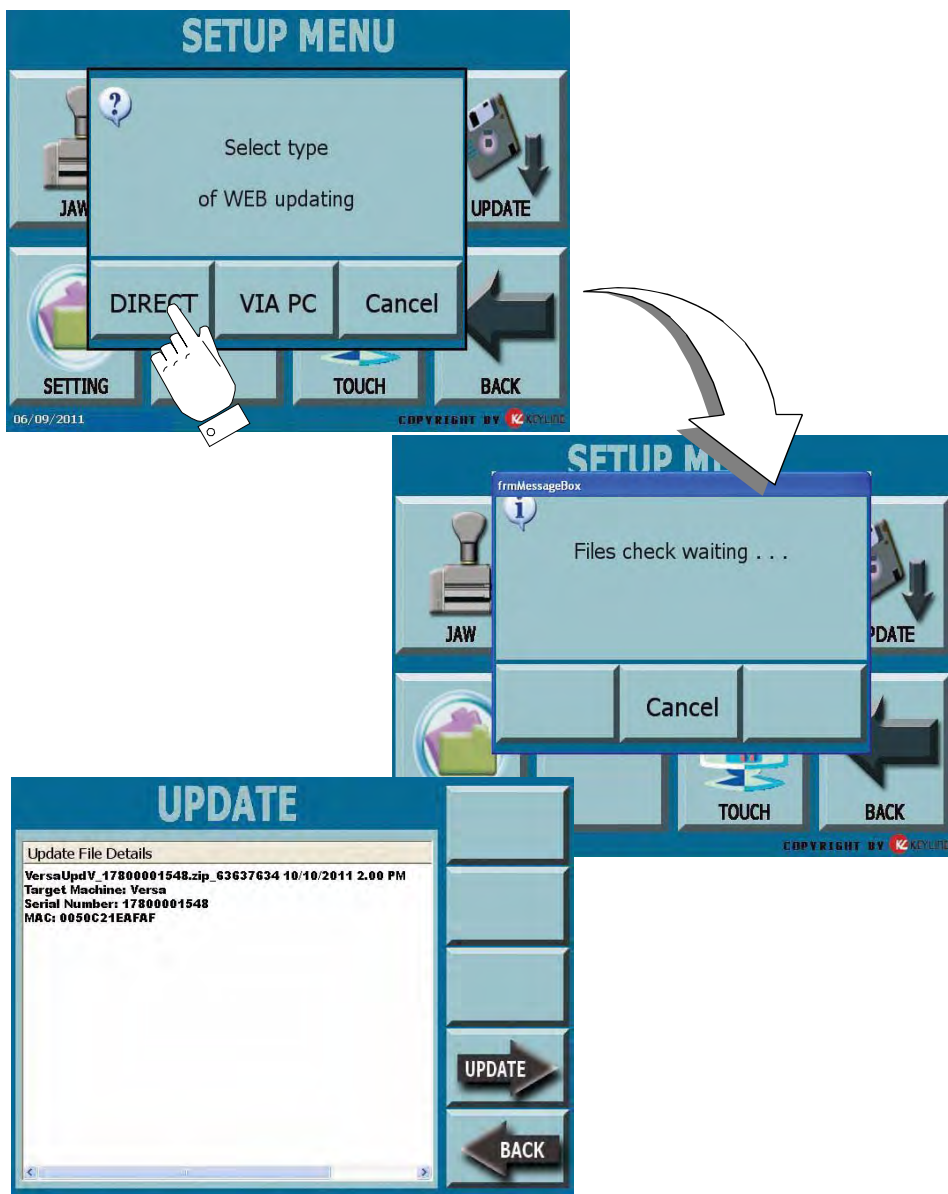
- **DIRECT**: the update package shall be downloaded and installed by the Versa machine in a completely automatic way, connecting to Keyonline through the internet.

**Note:** In this case, it is essential for the Versa machine to be connected to the internet through a modem (or corporate network). Contact your network administrator or the KeyLine Service centre to solve any problems.

- **VIA PC**: the update package is downloaded through a normal PC connected to the internet and saved on a USB flash drive, so as to be able to install it later on in the Versa machine.
- **CANCEL**: to cancel the update and go back to the main menu.

Selecting the WEB update modality, the programme makes an analysis of the installed contents to be updated. A waiting message shall appear, as the operation may require some minutes to process.

7.6.1.1 DIRECT



Pressing the "DIRECT" key, the programme proceeds to send the necessary information to the Keyonline service and later to download the update package.



According to the quantity of the data to be downloaded, the process might require a waiting time.

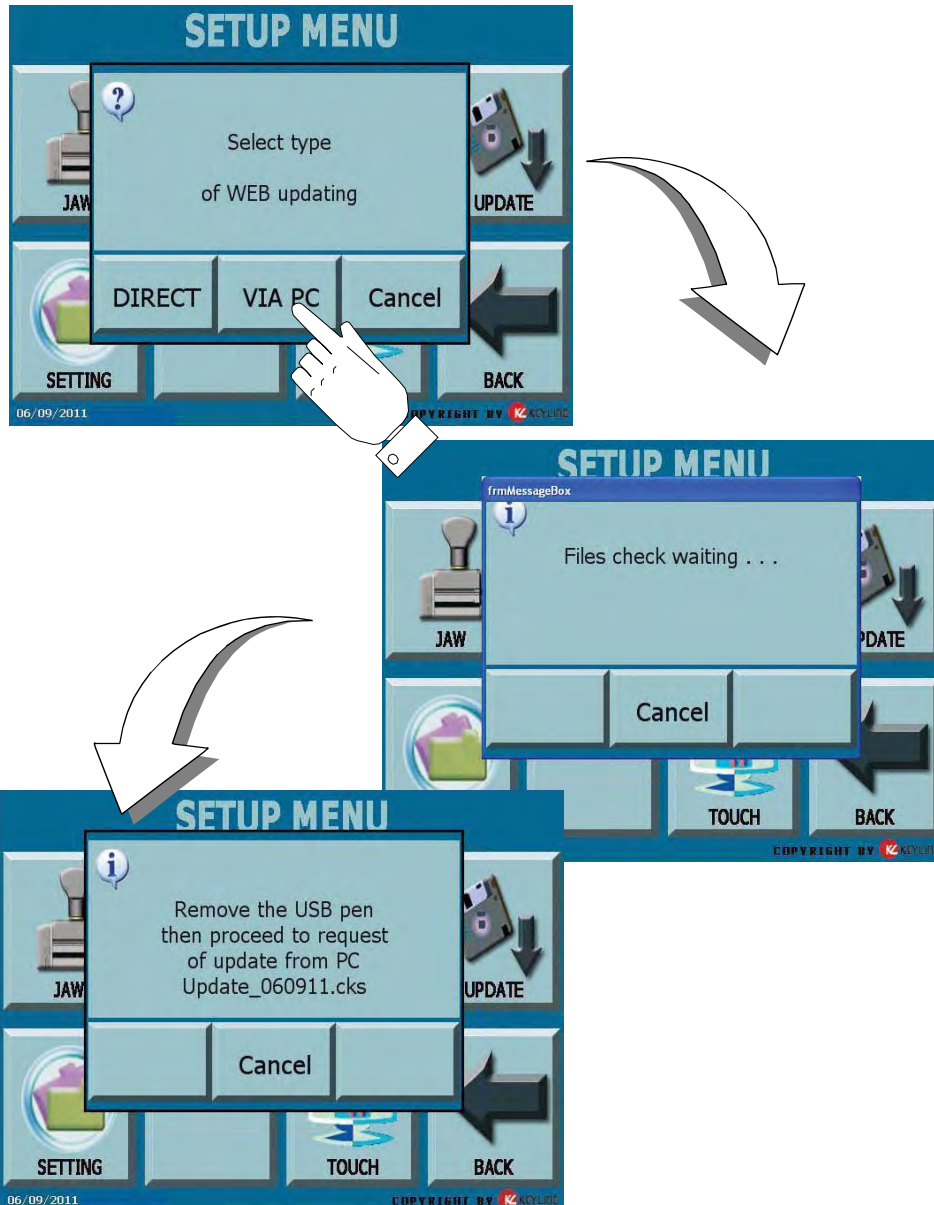
**Note:** During this phase, some error messages might appear, stating that the machine is not registered or that it is impossible to download the updates. In such cases, please check that all the preliminary operations have been concluded and that all the network parameters are configured correctly. For further help, please contact the KeyLine Service Centre.

At the end of the download a message confirms that the data have been received and can now be installed.

**HOW TO PROCEED:**

- Disconnect any USB flash drives connected to the machine and press the "UPDATE" key.
- The programme shall reboot and the update software executed; the user might be required to turn off and reboot the machine.
- Follow the instructions and wait until the end of the procedure, whereupon the most recent versions of the software and database shall be available.
- To annul the operation, press CANCEL.

## 7.6.1.2 VIA PC



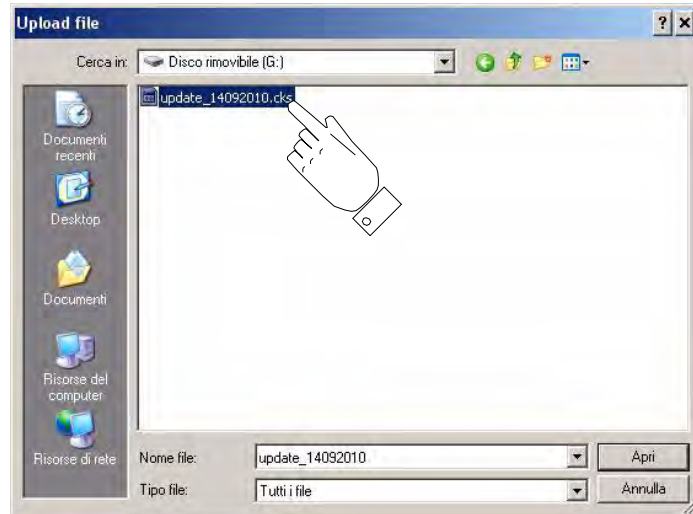
If it is not possible to configure the Versa machine to connect to the internet, this procedure makes it possible to update it by connecting to Keyonline through a PC with internet connection.

### HOW TO PROCEED:

- Press the "VIA PC" button; a message asking to connect a USB flash drive to the Versa machine shall appear .
- The programme shall copy a file with a .csk extension on the USB flash drive, containing the information to be sent to Keyonline to update the machine.
- In a few minutes a message appears: Remove the usb device and connect it to the PC.
- using the browser, connect to the following web page: <http://keyonline.keyline.it/>
- Select the "BROWSE" button to access the file selection dialogue box.



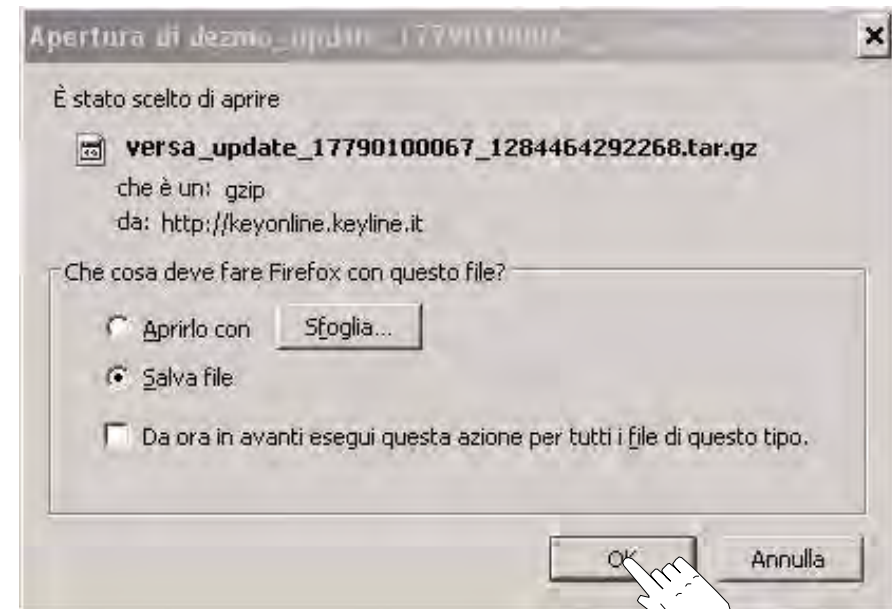
- Search and select the .csk file previously saved in the flash drive, then press "OPEN".



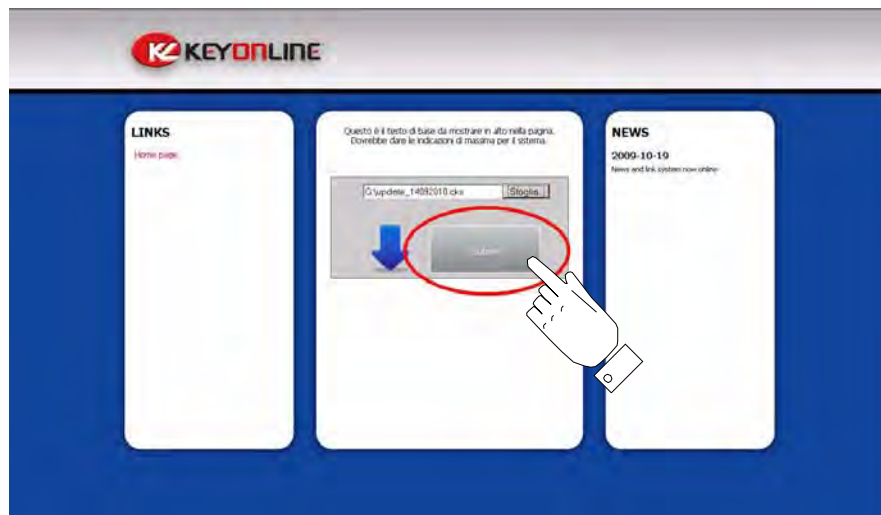
- A message that indicates to wait a few minutes appears on the screen.



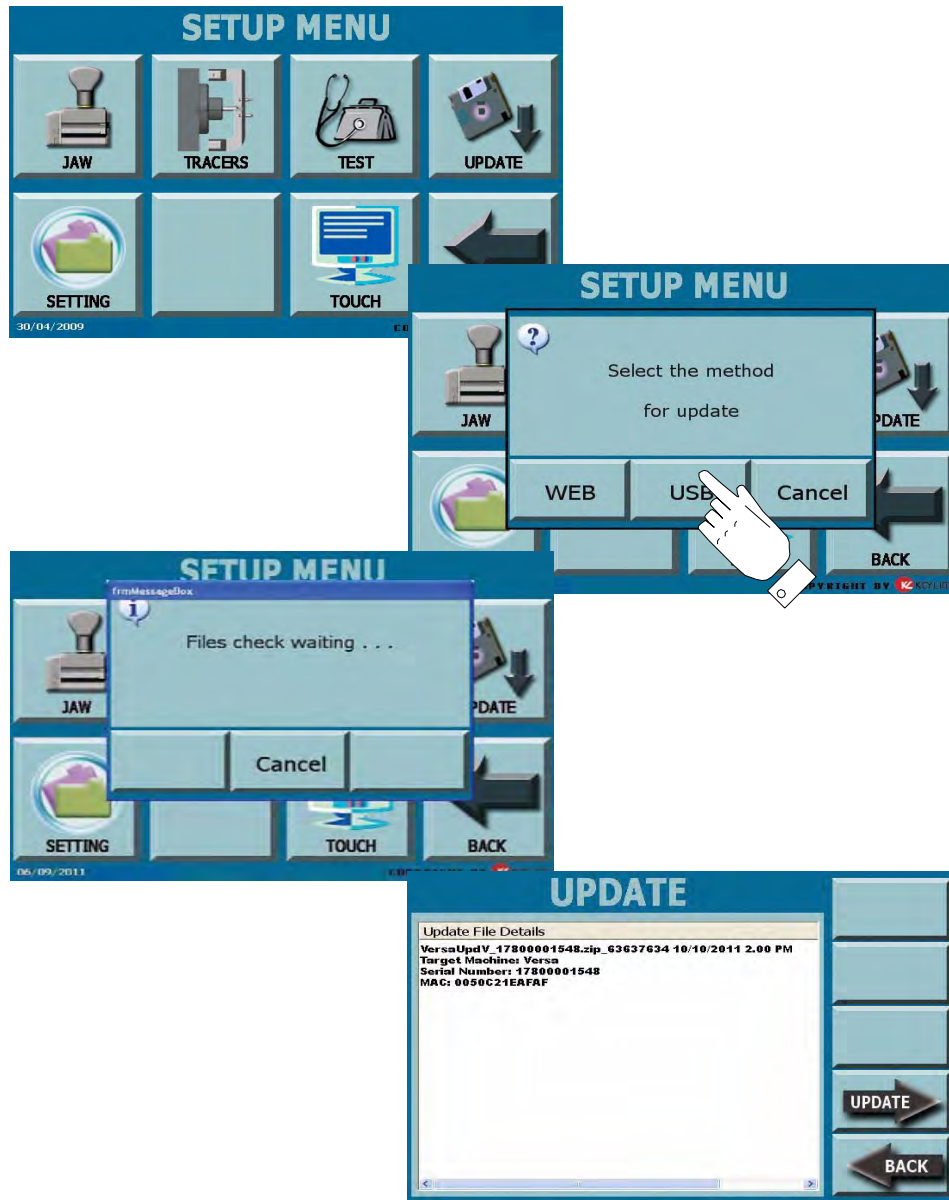
- Press "OK" to start downloading the file and when the browser asks where to save it, choose the USB flash drive.



- Press the "Request Update" button.



**Note:** The download may require some minutes, it is necessary to wait for the process to end.



- At the end, remove the flash drive and connect it again to the Versa machine.

**Note:** The downloaded package can be used only by the machine with which the update procedure was started.

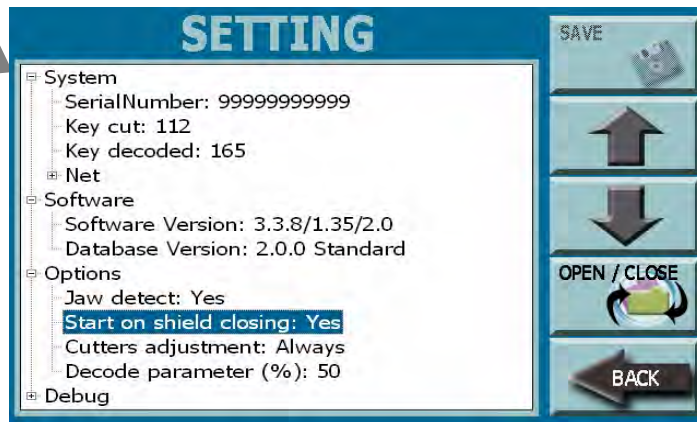
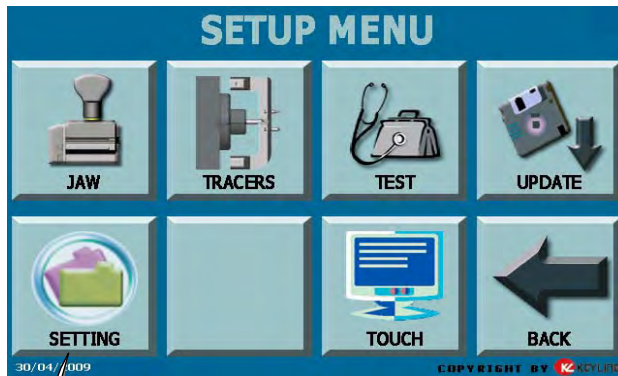


*During this phase, messages may appear stating the presence of errors in the package, the absence or invalidity of the licence. In these cases, check that you have used the same USB flash drive that you connected to the machine at the beginning of the update process. Contact the KeyLine Service Centre to solve any problems.*

- At the end of this operation, select “SETUP” and later “UPDATE” from the main menu;
- select the USB mode and follow the indications displayed.

7.7.0 SETTING

The "SETTING" menu permits to display and modify some information fields of machine and management software. It has a tree structure.



OPTIONS DISPLAYED:

- **SYSTEM:**
  - *Serial Number:* displays the machine serial number
  - *Key cut:* displays the number of keys cut by the machine
  - *Key decoded:* displays the number of keys decoded by the machine
  - *Net:*
    - *MAC Address:* displays the hardware address of the machine
    - *IP Address\*:* displays the net address of the machine
- **SOFTWARE:**
  - *Software Version:* indicates the version of the duplicating machine management programme
  - *Database Version:* indicates the version of the keys Database installed on the machine
- **OPTIONS:**
  - *Jaw detect\*:* indicates if the machine automatically detects the jaw type. **ATTENTION:** if NO is set, operator will not know if a wrong jaw is inserted into the machine. Make sure that the jaw is correct to avoid to damage the machine.
  - *Start on shield closing\*:* indicates if the machine starts the key cut when the front safety screen is closed.
  - *Cutters adjustment\*:* Indicates how often the tools adjustment must be carried out. "Always" means that tools are adjusted at any copy operation.
  - *Debug:* contains diagnostic information about the machine functioning. A password is necessary to accede to this menu.

Items indicated by an asterisk (\*) can be modified by the user.



**Warning:**



*modifications not-needed or wrong could compromise the machine good functioning. If you have any doubt, please contact KeyLine service department.*

---

**PROCEDURE:**

- Use the "OPEN/CLOSE" key to accede and go out from editable fields (\*). New data entering is permitted by means of the overprinted keyboard.
- Use the "UP-DOWN" arrows to move selection into the information fields.
- Use the "SAVE" key to save entered data.

**HOW TO EXIT FROM THE SCREEN:**

- Press the "BACK" key to return to the previous page

7.8.0 TOUCH

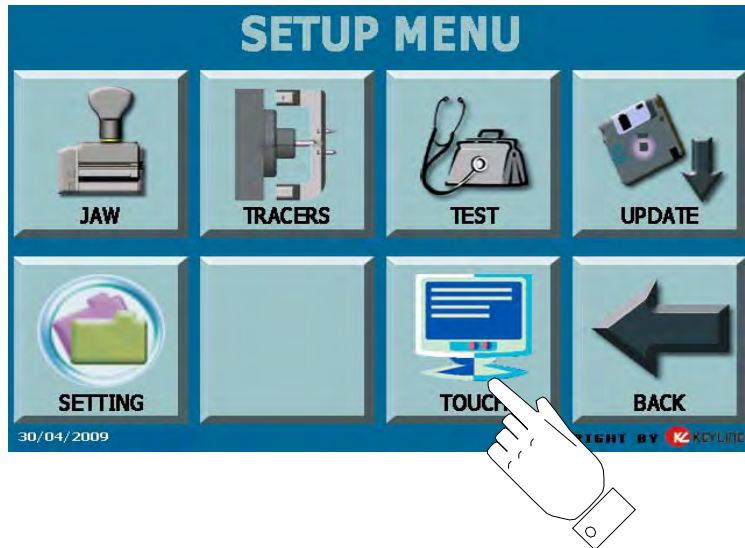
The "TOUCH" menu permits to adjust the Touch Screen visualization.

**HOW TO ACCESS THE SCREEN:**

- From the "SETUP" page by selecting the "TOUCH" key.

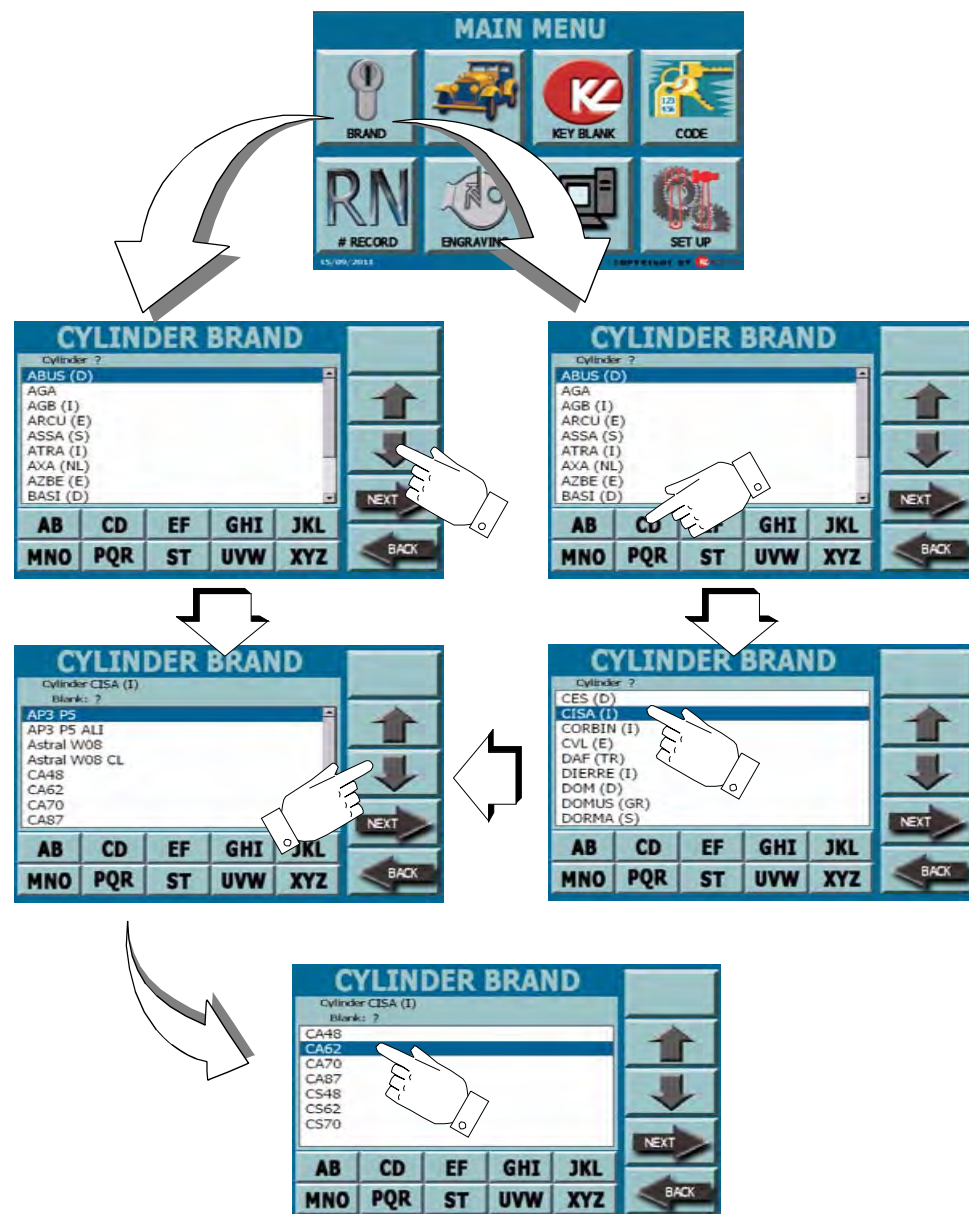
**PROCEDURE:**

- use the point of a pencil to gently select the centre of the cross that appears on the left bottom of the display.
- continue to select the centre of the cross until it disappears from the display;
- the touch screen adjustment has been done and it is necessary to select any point of the screen to go out.



KEY SEARCH

## 8.1.0 CYLINDER BRAND MENU



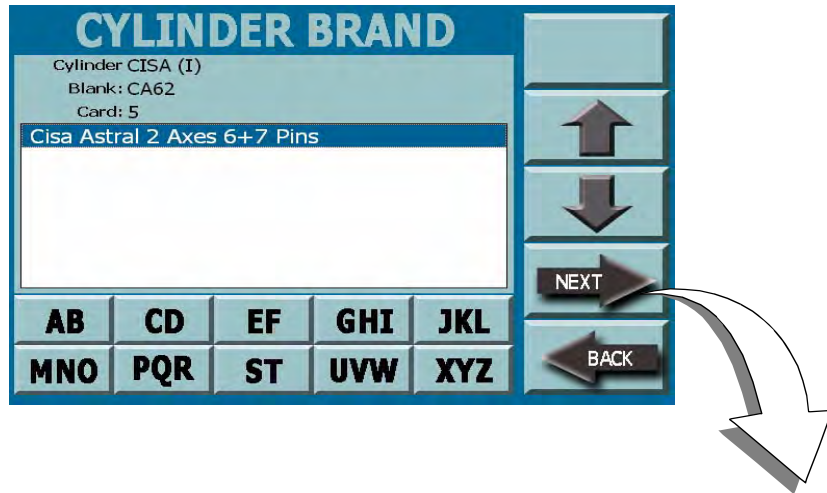
The "BRAND" menu permits to search and cut a key, through the list of the cylinder brands into the database.

## HOW TO ACCESS THE SCREEN:

- From the "MAIN MENU" page by selecting the "BRAND" key.

## PROCEDURE:

- use the arrows UP & DOWN to move into the brands menu and select the interested brand (e.g.: CISA);
- press the NEXT key to confirm and go to the next page;
  - it is possible to search by alphabetical arrangement by using the letter keys (e.g. CD to display the relevant brands).
  - in this case, select the brand (e.g. Cisa) from the relevant list and press the NEXT key to confirm
- a new page is displayed with a list of the key blank reference of the selected brand;
- use the arrows UP & DOWN to move into the menu and select the code of interested brand (e.g. CA62);
- press the NEXT key to confirm and go to the next page;
  - in case of search by alphabetical arrangement, a page will be displayed with the codes of selected letter.
  - in this case, select the code (e.g. CA62) from the relevant list and press the NEXT key to confirm

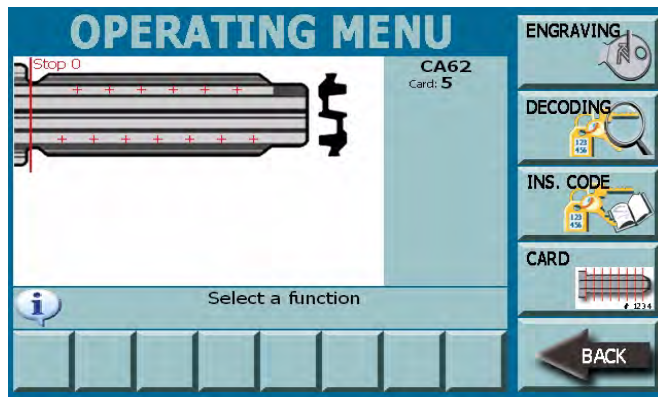


- a page is displayed with the key features (Cylinder, Blank, Card) and the description of the lock system (e.g. Cisa Astral 2 Axes 6+7 Pins);
- if displayed key is correct press the NEXT key to accede to the OPERATING MENU

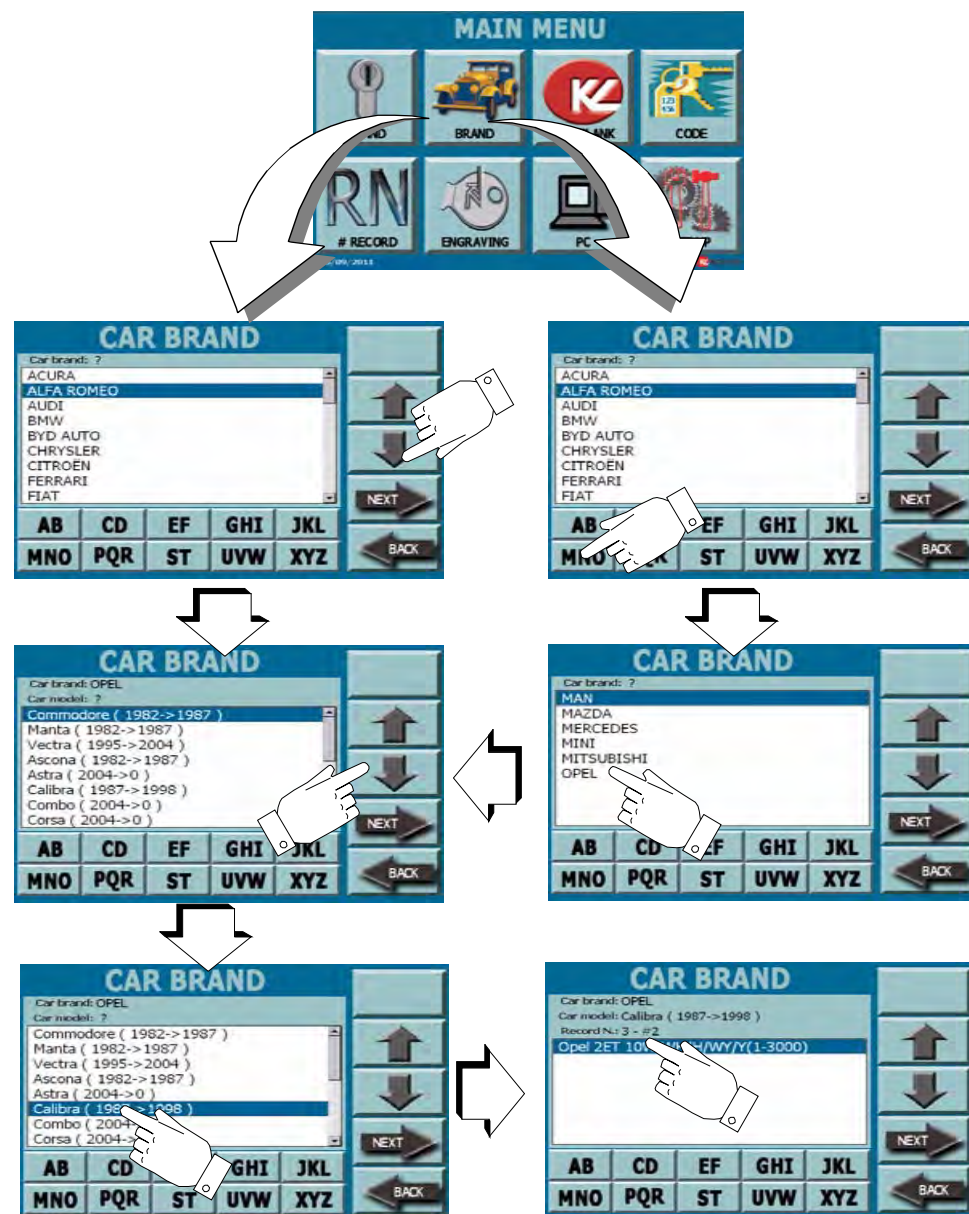
**Note:** Use of OPERATING MENU is described in chapter 9 page 47.

#### HOW TO EXIT FROM THE SCREEN:

- Press the "BACK" key to return to the previous page.



## 8.2.0 CAR BRAND MENU



The "CAR BRAND" menu permits to search and cut a key, through the list of the car brands into the database.

### HOW TO ACCESS THE SCREEN:

- From the "MAIN MENU" page by selecting the "CAR BRAND" key.

### PROCEDURE:

- use the arrows UP & DOWN to move into the brands menu and select the interested brand (e.g. OPEL);
- press the NEXT key to confirm and go to the next page;
- it is possible to search by alphabetical arrangement by using the letter keys (e.g. MNO to display the relevant brands).
- in this case, select the brand (e.g. OPEL) from the relevant list and press the NEXT key to confirm
- a new page is displayed with list of the car model year of the selected brand;
- use the arrows UP & DOWN to move into the menu and select the interested model (e.g. Calibra);
- press the NEXT key to confirm the choice and go to the page where the Record Number of the selected model is displayed;
- confirm and press the NEXT key;

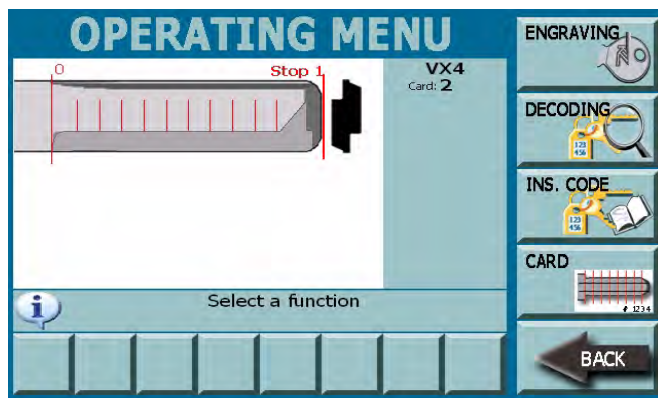


- a page is displayed with the key features (Car brand, Model year, Record Number, Card) and the list of available Blank;
- select the interested Blank (e.g. VX4) and press the NEXT key to accede to the OPERATING MENU.

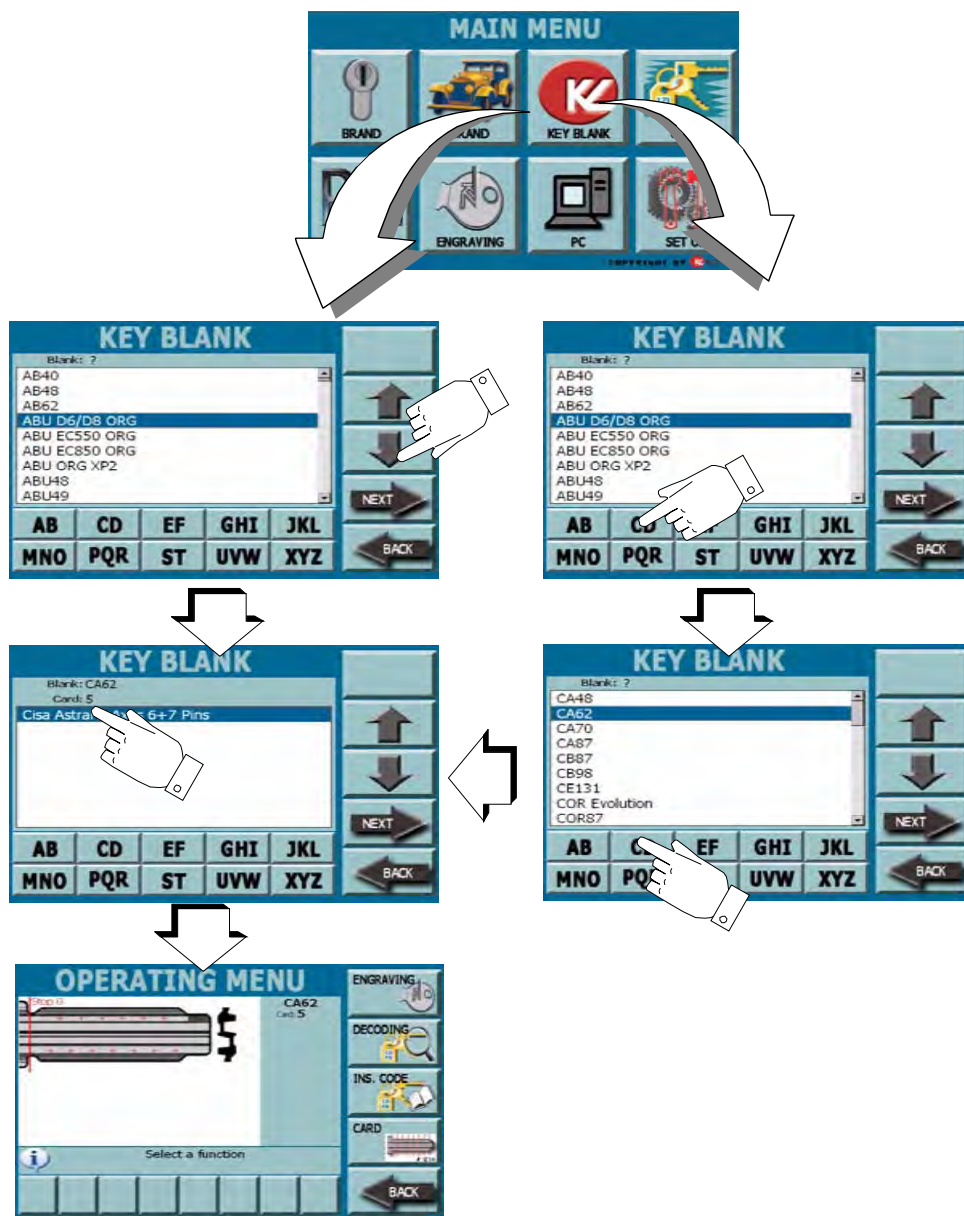
**Note:** Use of OPERATING MENU is described in chapter 9 page 47.

#### HOW TO EXIT FROM THE SCREEN:

- Press the "BACK" key to return to the previous page.



## 8.3.0 KEY BLANK MENU



The "KEY BLANK" menu permits to search and cut a key, through the list of the Keyline keys into the database.

## HOW TO ACCESS THE SCREEN:

- From the "MAIN MENU" page by selecting the "KEY BLANK" key.

## PROCEDURE:

- use the arrows UP & DOWN to move into the menu and select the interested Key Blank (e.g. CA62);
- press the NEXT key to confirm and go to the next page;
- it is possible to search by alphabetical arrangement by using the letter keys (e.g. CD to display the relevant codes).
- in this case, select the code (e.g. CA62) from the relevant list and press the NEXT key to confirm
- a page is displayed with the key features (Blank, Card) and the list of available Lock System;
- select the interested Lock System (e.g. Cisa Astral 2 Axes 6+7 Pins) and press the NEXT key to accede to the OPERATING MENU.

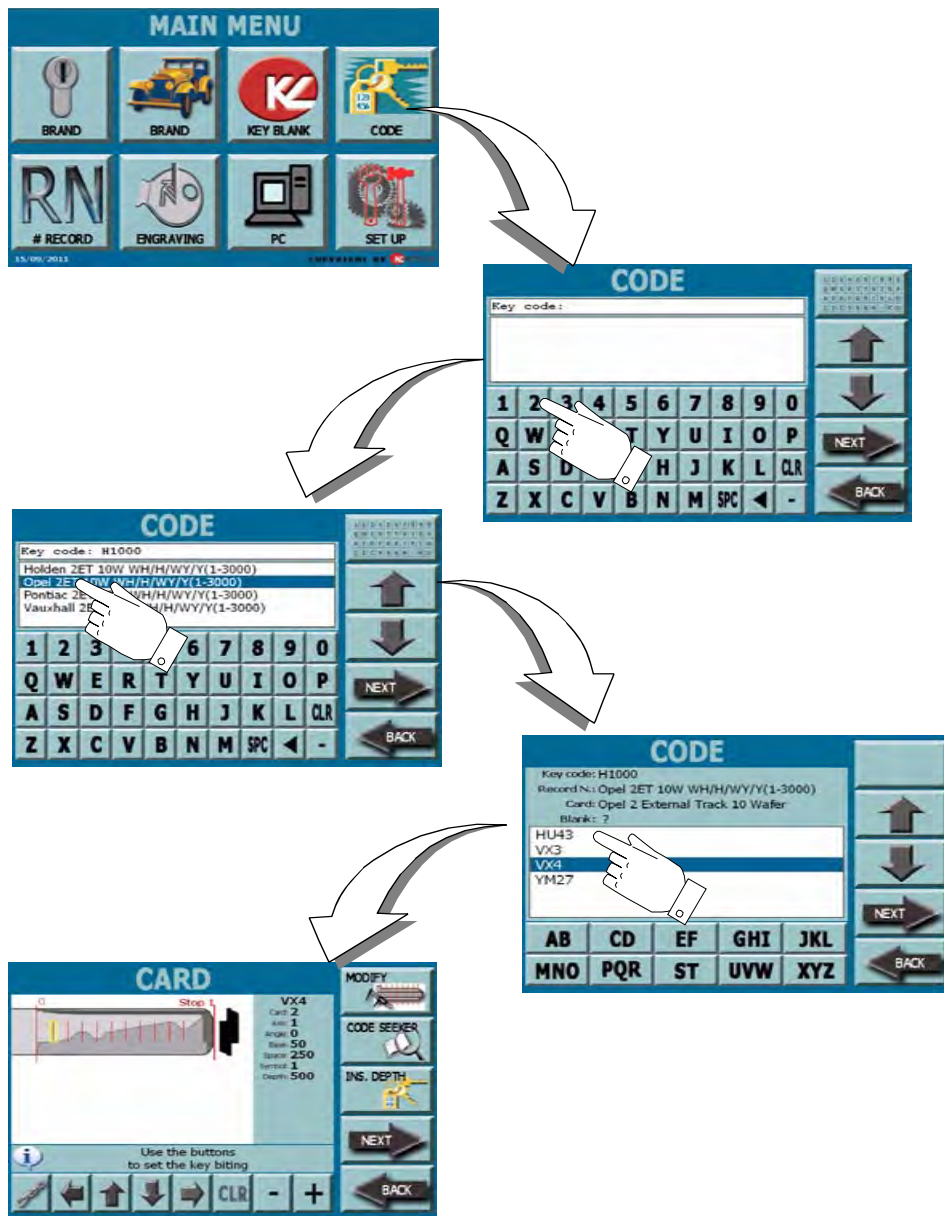
**Note:** Use of OPERATING MENU is described in chapter 9 page 47.

## HOW TO EXIT FROM THE SCREEN:

- Press the "BACK" key to return to the previous page.



## 8.4.0 CODE MENU



The "CODE" menu permits to search the type of key to be cut by entering the code of the key.

### HOW TO ACCESS THE SCREEN:

- From the "MAIN MENU" page by selecting the "CODE" key.

### PROCEDURE:

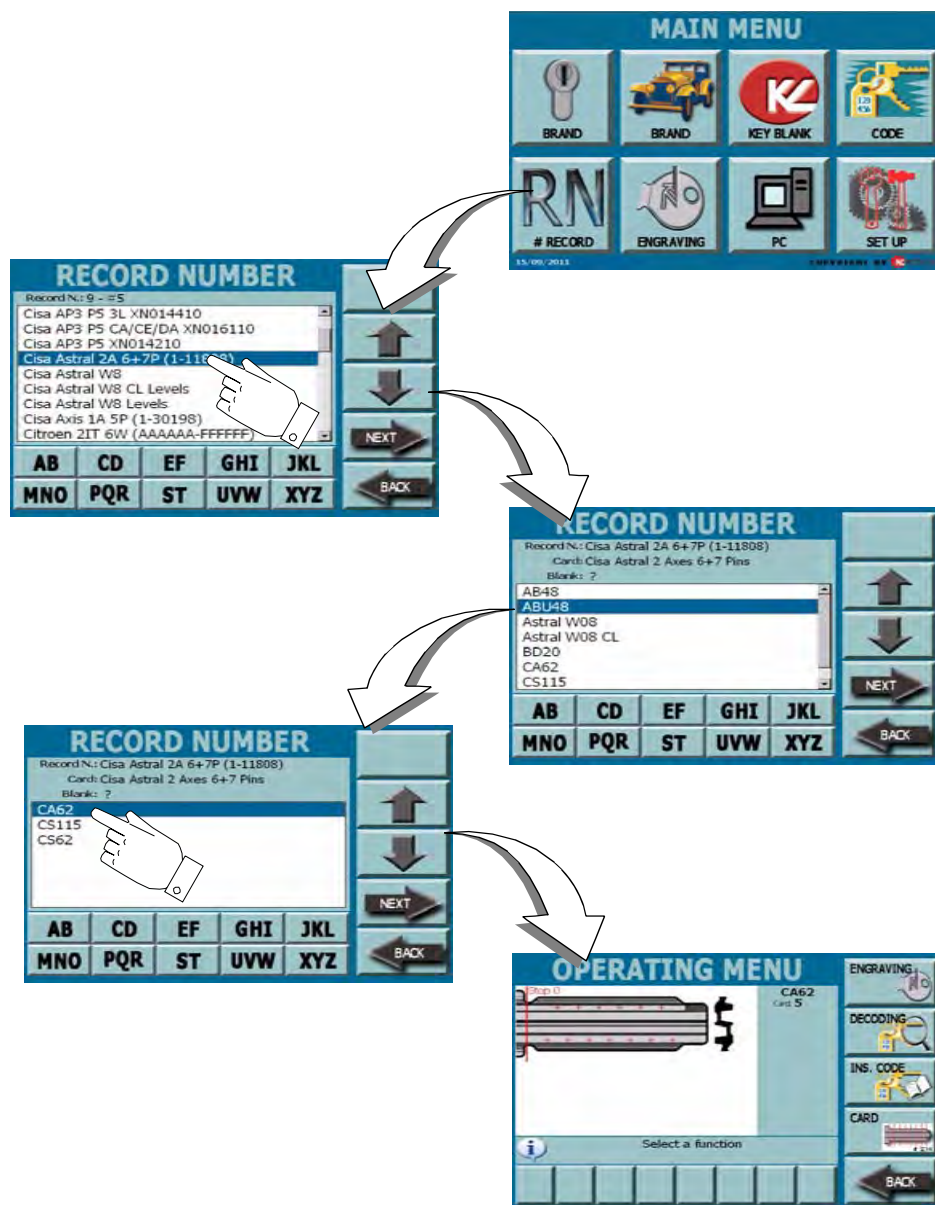
- By means of the alphanumerical keypad enter the code (or part of the code) of the key to be cut;
- press the NEXT key to confirm and display the list of the available Record Numbers;
- select the interested Lock System and press the NEXT key to confirm;
- on the following screen a page is displayed with the key features (Key Code, Record Number, Card) and the list of available Blank Codes;
- select the interested Blank Code and press the NEXT key to accede to the key Card Menu.

**Note:** Use of CARD MENU is described in paragraph 9.1.4.1. on page 61.

### HOW TO EXIT FROM THE SCREEN:

- Press the "BACK" key to return to the previous page.

## 8.5.0 RECORD NUMBER MENU



The "RECORD NUMBER" page permits to search the type of key to be cut by entering the system number of the key.

**HOW TO ACCESS THE SCREEN:**

- From the "MAIN MENU" page by selecting the "# RECORD" key.

**PROCEDURE:**

- use the UP & DOWN arrows to move into the menu and select the interested Record Number (e.g. Cisa Astral 2 Axes 6+7 Pins);
- press the NEXT key to confirm and display the list of the available Blank Codes;
- select the interested Blank Code (e.g. CA62) and press the NEXT key to accede to the OPERATING MENU;

**Note:** Use of OPERATING MENU is described in chapter 9 page 47.

**HOW TO EXIT FROM THE SCREEN:**

- Press the "BACK" key to return to the previous page.

# OPERATING MENU

## 9.1.0 OPERATING MENU

The OPERATING MENU permits to modify the key cutting settings and to customize some keys characteristics according to specific needs.

## OPERATING MENU OPTIONS:

**ENGRAVING:**

permits to select the head shape as a background, where to fit a text, a logo, a counter and a serial number

**DECODING:**

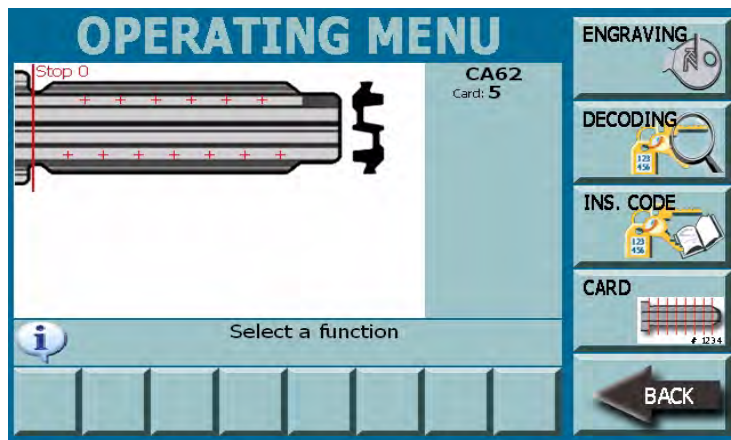
permits to start the key reading process

**INS. CODE:**

permits to manually enter the code of the key

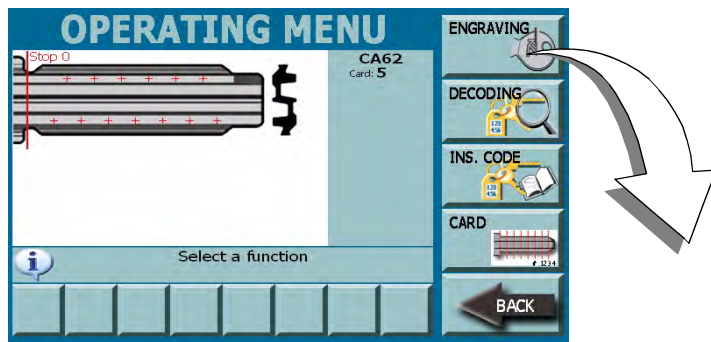
**CARD:**

permits to manually insert the bitting of the key to be cut

**HOW TO EXIT FROM THE SCREEN:**

- Press the "BACK" key to return to the previous page.

## 9.1.1 ENGRAVING



The "ENGRAVING" menu permits to change and set some key features before starting the key cut.

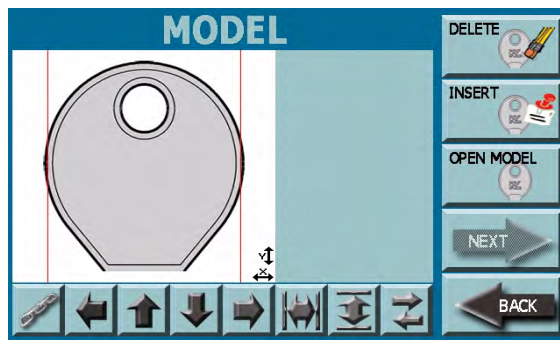
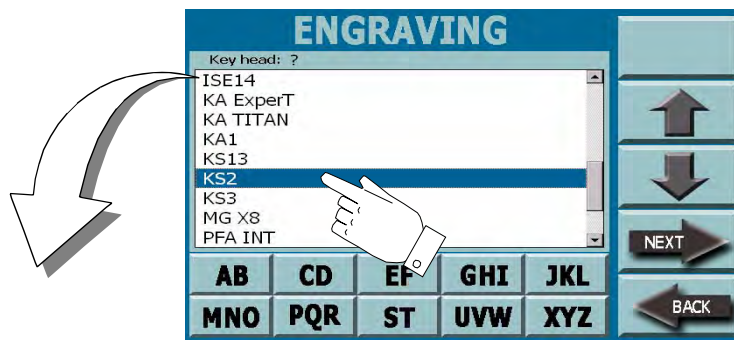
### HOW TO ACCESS THE SCREEN:

- From the "OPERATING MENU" page by selecting the "ENGRAVING" key.

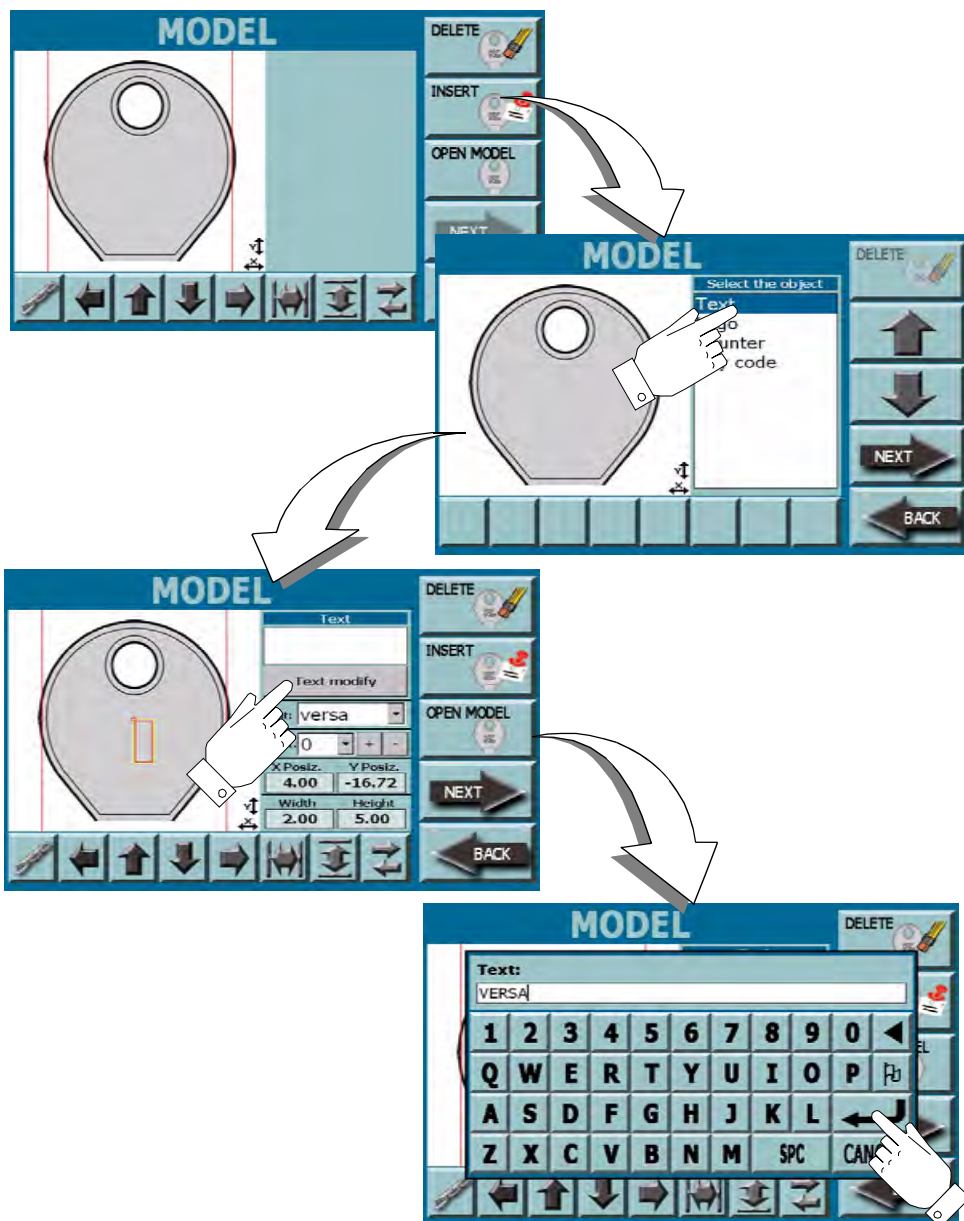
### PROCEDURE:

- select the reference (e.g. KS2) of the shape of head to be engraved from the list displayed by the video;
- press the NEXT key to continue;
- the video will display the selected head and the following setting controls:

- Insert: to personalize the head by entering words, logos, counter and serial number
- Delete: to cancel set data
- Open model: to select a model that has previously been created and memorized
- 4 direction arrows (UP - DOWN - RH - LH): to move entered object in all four directions
- 2 size arrows: to increase or decrease the dimension of entered object
- Chain: to select and group two or more objects
- Move (Tab): to move the selection from an object to another one



9.1.1.1 INSERT MENU - TEXT



When the head has been selected it is possible to personalize it by means of the INSERT MENU.

The following functions are displayed into the INSERT menu:

- TEXT
- LOGO
- COUNTER
- KEY CODE

This paragraph describes the text insertion procedure.

HOW TO ACCESS THE SCREEN:

- From the "MODEL" page by pressing the "INSERT" key and then the "TEXT".

**Note:** If you want to modify a head that has already been created with words, logos, code etc.. it is necessary to:

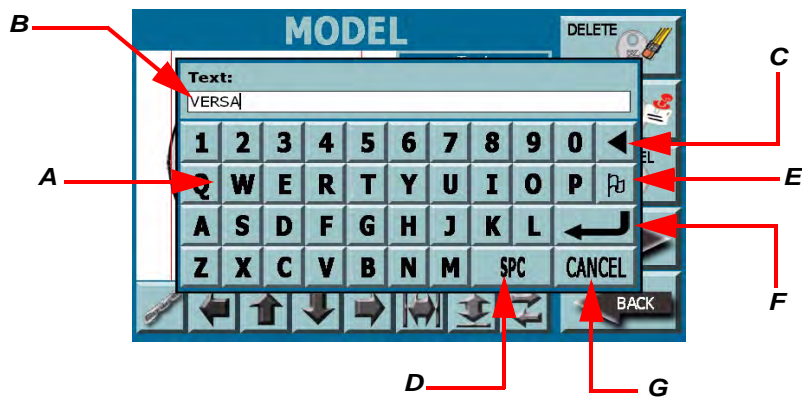
- press the OPEN MODEL key
- select the interested model from the menu displayed in the video.
- press the NEXT key to confirm.

PROCEDURE:

- from the TEXT menu select "TEXT MODIFY" and enter the text to be engraved by means of the keyboard;
- press the ENTER ARROW to confirm and display the typed text on the key head.

**Note:** use the controls described in "Menu options" on the following page to modify the position, dimensions and font of the text .

- select the INSERT key to continue the personalization of head and enter the logo, counter or key code;
- press the NEXT key to go to the ENGRAVING page (refer to "Engraving" on page 58).

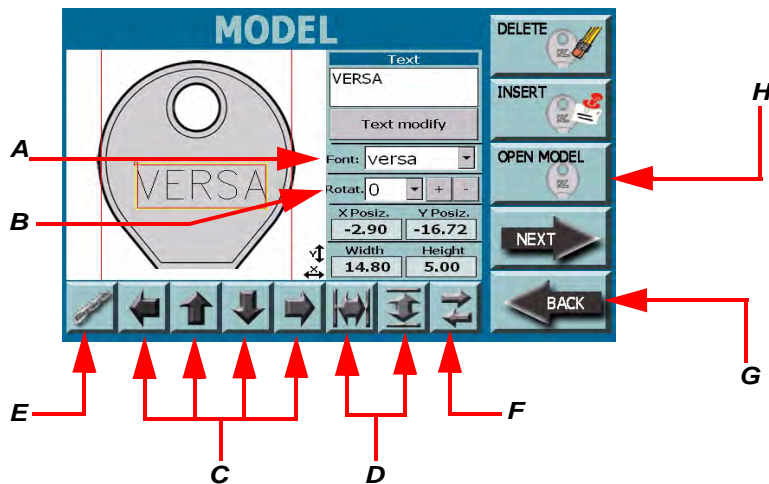


## KEYBOARD FUNCTIONS:

- the alphanumeric keyboard is composed by:
  - A. alphanumeric keys: to enter the text
  - B. input field: displays the entered text
  - C. arrow key: to cancel one letter at a time
  - D. SPC key: to enter one or more spaces between two words
  - E. flag key: to enter special types (available with the further updates).
  - F. CANCEL key: to cancel and return to the previous page
  - G. Enter arrow: to confirm entered data and return to the previous page

## MENU OPTIONS

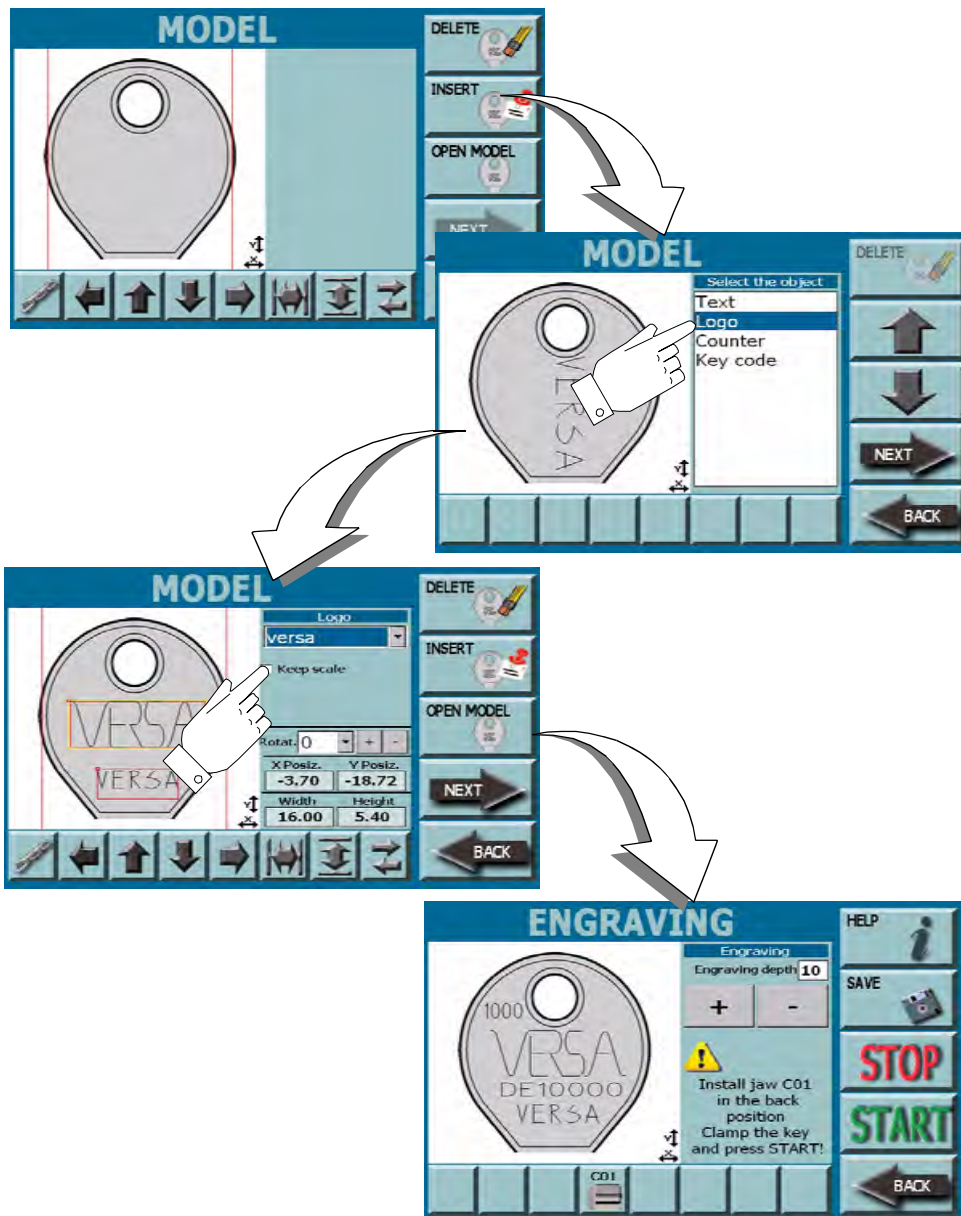
- A. the FONT field permits to change the font
- B. the ROTATION permits to rotate the text
- C. the DIRECTION ARROWS permits to move objects. X and Y position fields indicate the value
- D. the SIZE ARROWS increase the width and height of objects. Dimensions are indicated into the relevant fields
- E. the CHAIN key permits to select and group two or more objects to modify them, move them or dimension them at the same time
- F. the MOVE key permits to move the selection from an object to another one



## HOW TO EXIT FROM THE SCREEN:

- G. press the BACK key to return to the previous page;
- H. the head modifications memorization is requested; they will be saved into the "OPEN MODEL" menu;
  - press the YES key to save and enter the name into the keyboard, and then press Enter to save.
  - press the NO key to come back and do not save.

9.1.1.2 INSERT MENU - LOGO



This function permits to import a logo to be engraved on the key head.

HOW TO ACCESS THE SCREEN:

- From the “MODEL” page press the “INSERT” key and then “LOGO”.
- From any of TEXT, COUNTER or KEY CODE pages press the “INSERT” key, select “LOGO” and press the NEXT key to confirm.

**Note:** If you want to modify a head that has already been created with words, logos, code etc.. it is necessary to:

- select the OPEN MODEL key
- select the interested model from the menu displayed in the video.
- press the NEXT key to confirm.

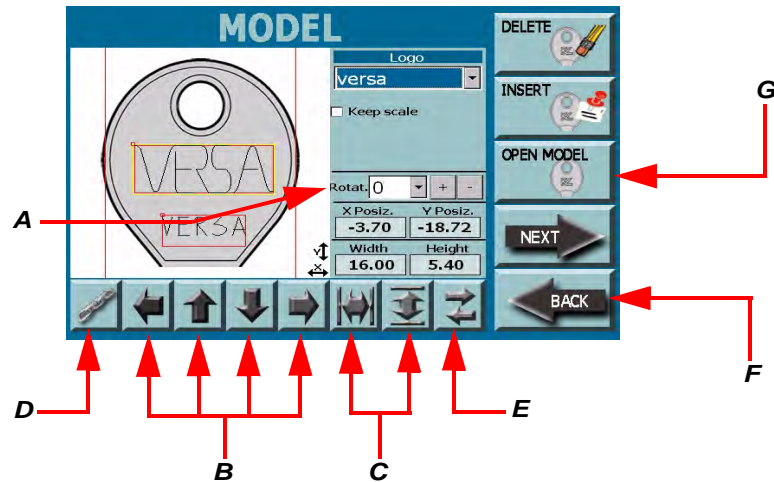
PROCEDURE:

- from the LOGO drop-down menu select the interested logo;
- the selected logo will appear on the head.

**Note:** use the controls described in “Menu options” on the following page to modify the position and dimensions

- select the INSERT key to continue with the personalization of head and insert the text, the counter, the key code;
- select the NEXT key to go to the ENGRAVING page (refer to “Engraving” on page 58).





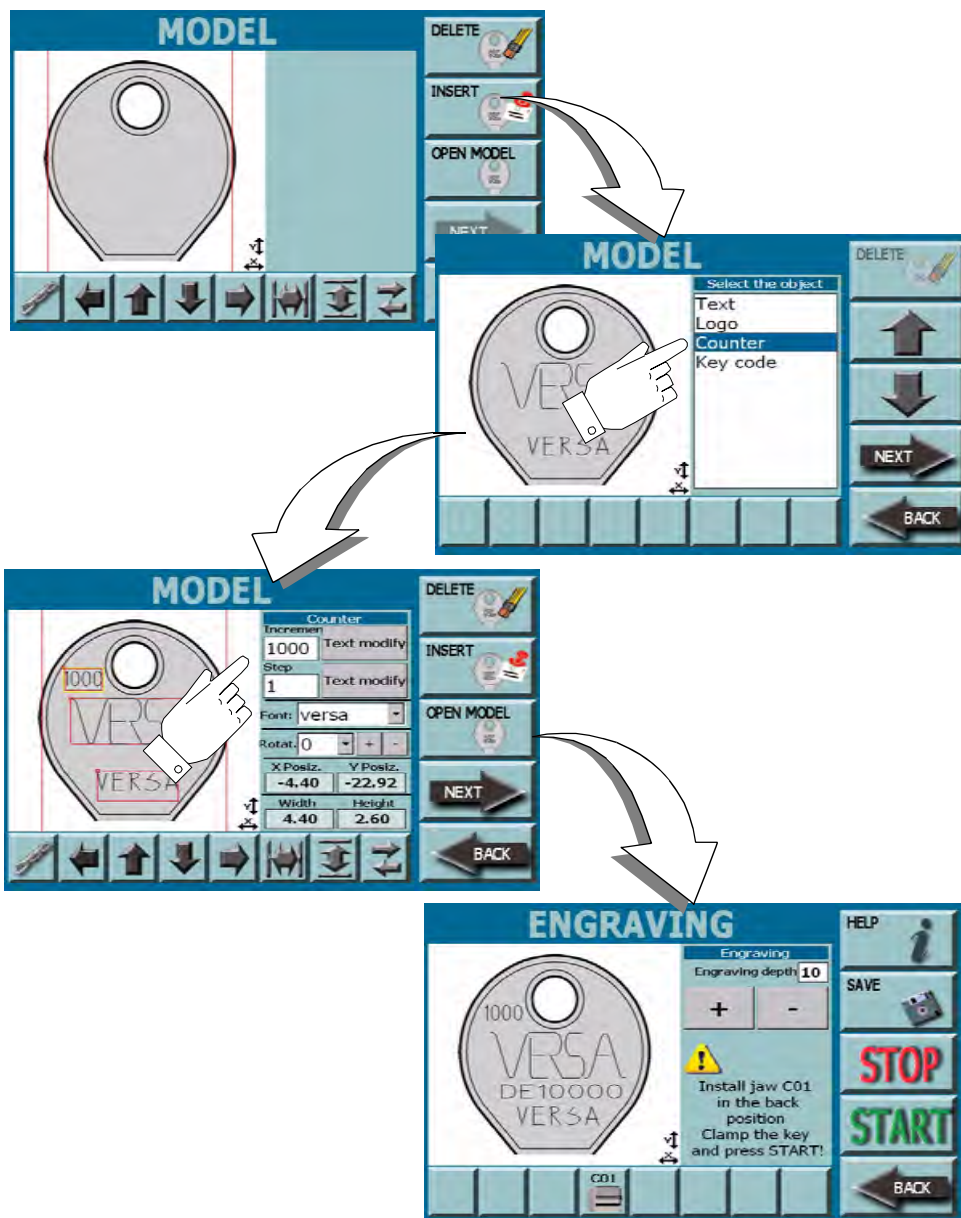
## MENU OPTIONS

- A. the ROTATION permits to rotate the logo
- B. the DIRECTION ARROWS permits to move objects. X and Y position fields indicate the value
- C. the SIZE ARROWS pressed one per time, increase the width and height of objects, pressed continuously they reduce them. Dimensions are indicated into the relevant fields
- D. the CHAIN key permits to select and group two or more objects to modify them, move them or dimension them at the same time
- E. the MOVE key permits to move the selection from an object to another one

## HOW TO EXIT FROM THE SCREEN:

- F. press the BACK key to return to the previous page;
- G. the head modifications memorization is requested; they will be saved into the "OPEN MODEL" menu;
  - press the YES key to save and enter the name into the keyboard, and then press Enter to save.
  - press the NO key to come back and do not save.

9.1.1.3 INSERT MENU - COUNTER



This function permits to insert on the head an automatic counter of the number of produced keys.

HOW TO ACCESS THE SCREEN:

- From the “MODEL” page press the “INSERT” key and then “COUNTER”
- From any of TEXT, COUNTER or KEY CODE pages press the “INSERT” key, select “COUNTER” and press the NEXT key to confirm

Note: If you want to modify a head that has already been created with words, logos, code etc.. it is necessary to:

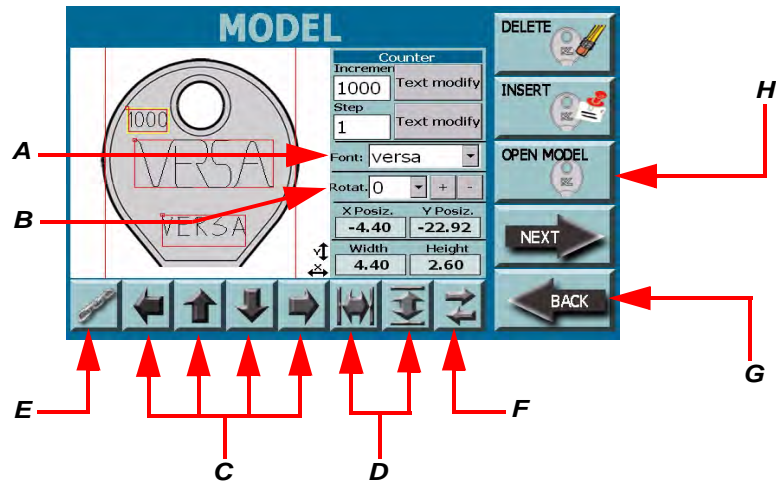
- select the OPEN MODEL key
- select the interested model from the menu displayed in the video.
- press the NEXT key to confirm.

PROCEDURE:

- enter the increment number and the step number into the COUNTER field

Note: use the controls described in “Menu options” on the following page to modify the position, dimensions and font of the text

- select the INSERT key to continue with the personalization of head and insert the text, the counter, the key code;
- select the NEXT key to go to the ENGRAVING page (refer to “Engraving” on page 58).



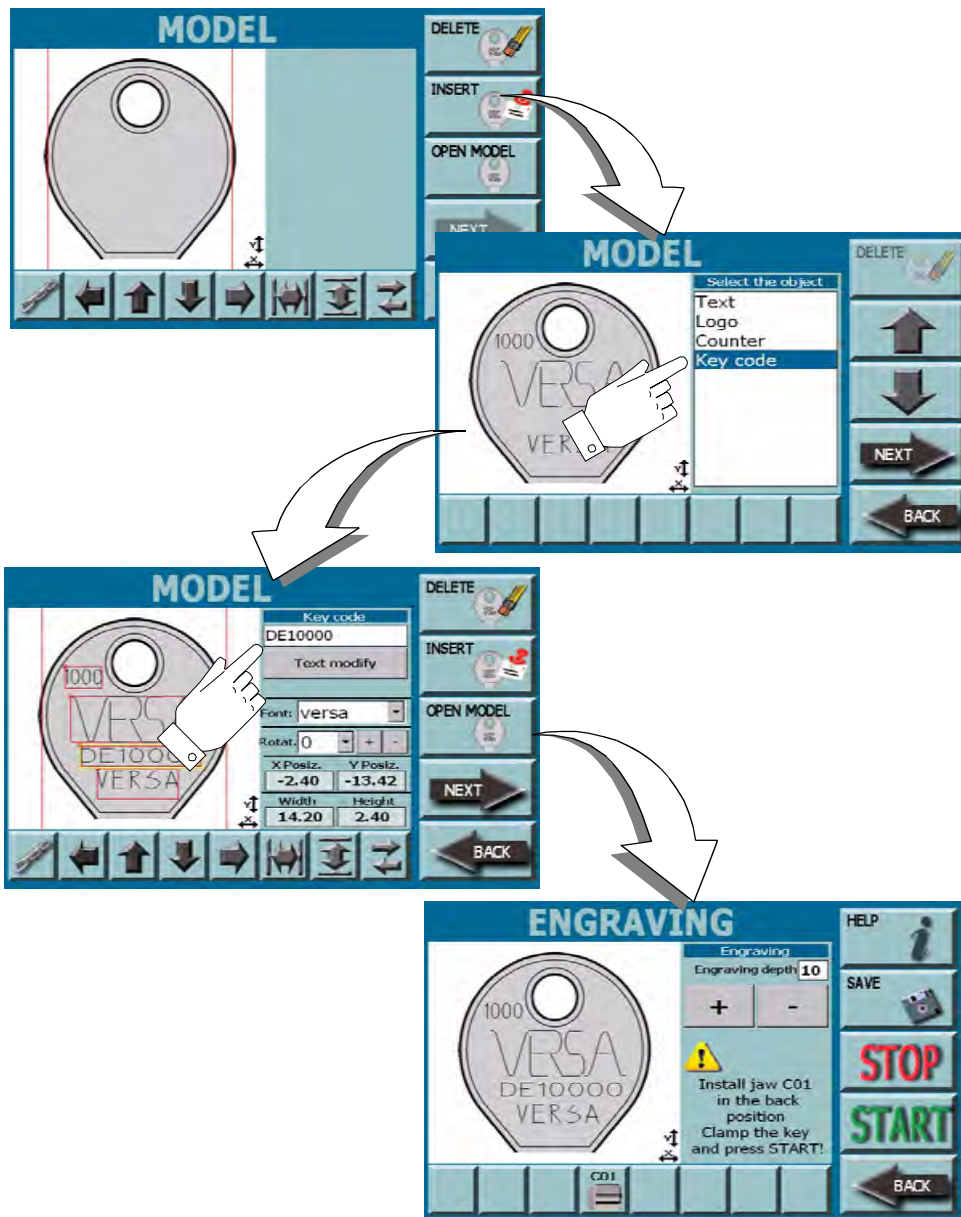
**MENU OPTIONS**

- A. the FONT field permits to change the font
- B. the ROTATION field permits the text rotation at intervals of 90° degrees
- C. the DIRECTION ARROWS permits to move objects. X and Y position fields indicate the value
- D. the SIZE ARROWS pressed one per time, increase the width and height of objects. Pressed continuously it reduces their dimensions are indicated into the relevant fields
- E. the CHAIN key permits to select and group two or more objects to modify them, move them or dimension them at the same time
- F. the MOVE key permits to move the selection from an object to another one

**HOW TO EXIT FROM THE SCREEN:**

- G. press the BACK key to return to the previous page;
- H. the head modifications memorization is requested; they will be saved into the "OPEN MODEL" menu;
  - press the YES key to save and enter the name into the keyboard, and then press Enter to save.
  - press the NO key to come back and do not save.

9.1.1.4 INSERT MENU - KEY CODE



This function permits to insert on the head, an identification code of produced key.

HOW TO ACCESS THE SCREEN:

- From the “MODEL” page press the “INSERT” key and then “KEY CODE”
- From any of TEXT, COUNTER or KEY CODE pages press the “INSERT” key, select “KEY CODE” and press the NEXT key to confirm

Note: If you want to modify a head that has already been created with words, logos, code etc.. it is necessary to:

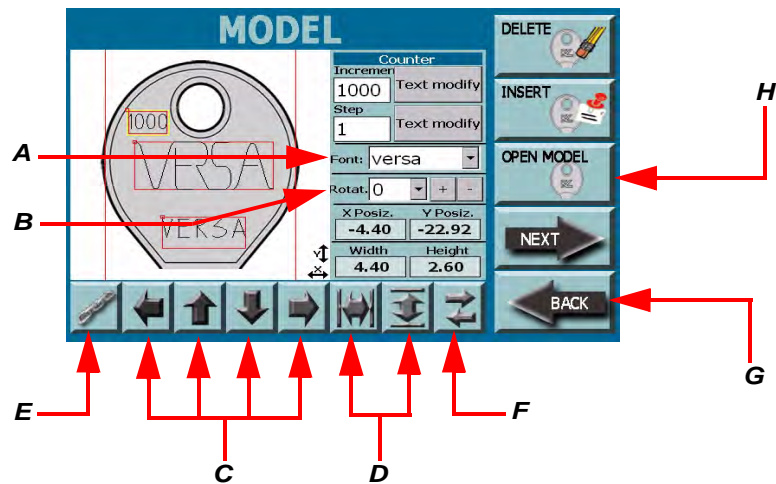
- select the OPEN MODEL key
- select the interested model from the menu displayed in the video.
- press the NEXT key to confirm.

PROCEDURE:

- from the KEY CODE menu select the “TEXT MODIFY” and insert the key code to be engraved by means of the keyboard;
- press the ENTER ARROW to confirm
- selected code will appear on the key head

Note: use the controls described in “Menu options” on the following page to modify the position, dimensions and font of the text

- select the INSERT key to continue with the personalization of head and insert the text, the counter, the key code;
- select the NEXT key to go to the ENGRAVING page (refer to “Engraving” on page 58).



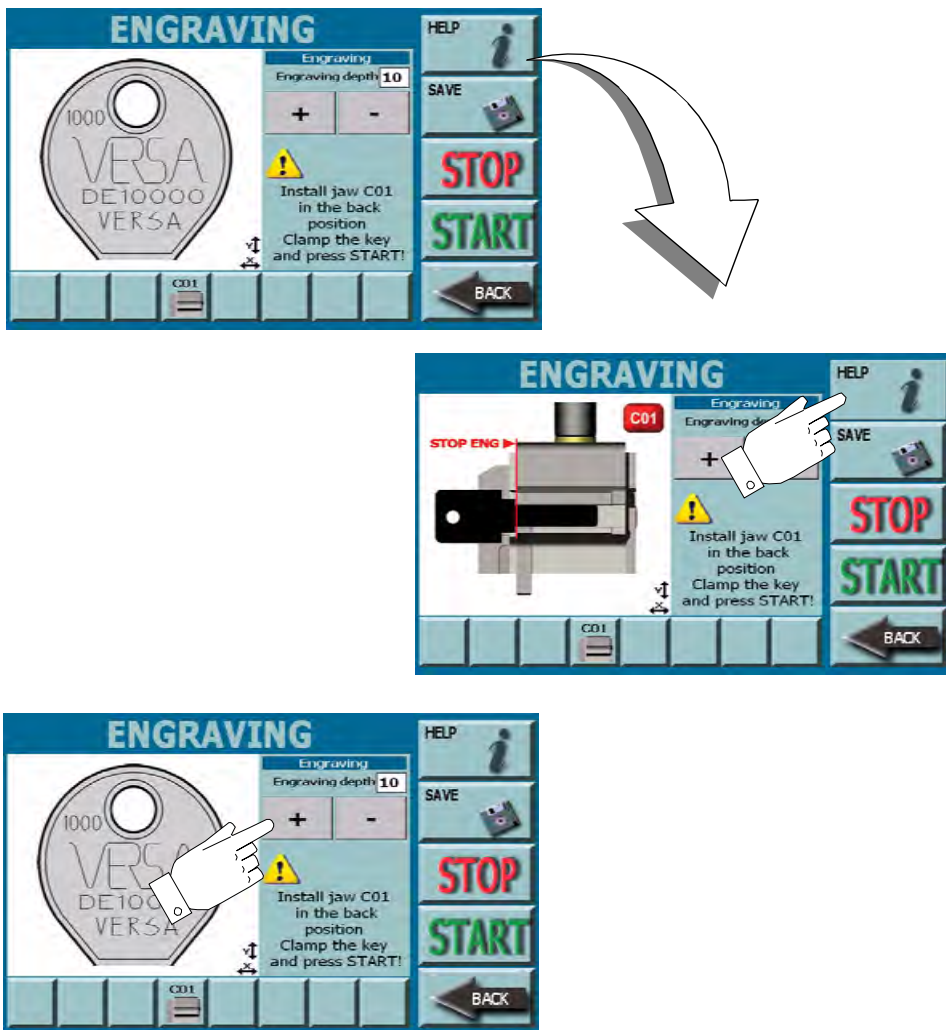
## MENU OPTIONS

- A. the FONT field permits to change the font
- B. the ROTATION permits to rotate the text
- C. the DIRECTION ARROWS permits to move objects. X and Y position fields indicate the value
- D. the SIZE ARROWS pressed one per time, increase the width and height of objects. Pressed continuously it reduces their dimensions are indicated into the relevant fields
- E. the CHAIN key permits to select and group two or more objects to modify them, move them or dimension them at the same time
- F. the MOVE key permits to move the selection from an object to another one

## HOW TO EXIT FROM THE SCREEN:

- G. press the BACK key to return to the previous page;
- H. the head modifications memorization is requested; they will be saved into the "OPEN MODEL" menu;
  - press the YES key to save and enter the name into the keyboard, and then press Enter to save.
  - press the NO key to come back and do not save.

9.1.2 ENGRAVING



PROCEDURE:

- Created head and jaw installation indications are displayed on “Engraving” page;

Note: press the HELP key to display the jaw to be installed and instructions for key correct positioning.

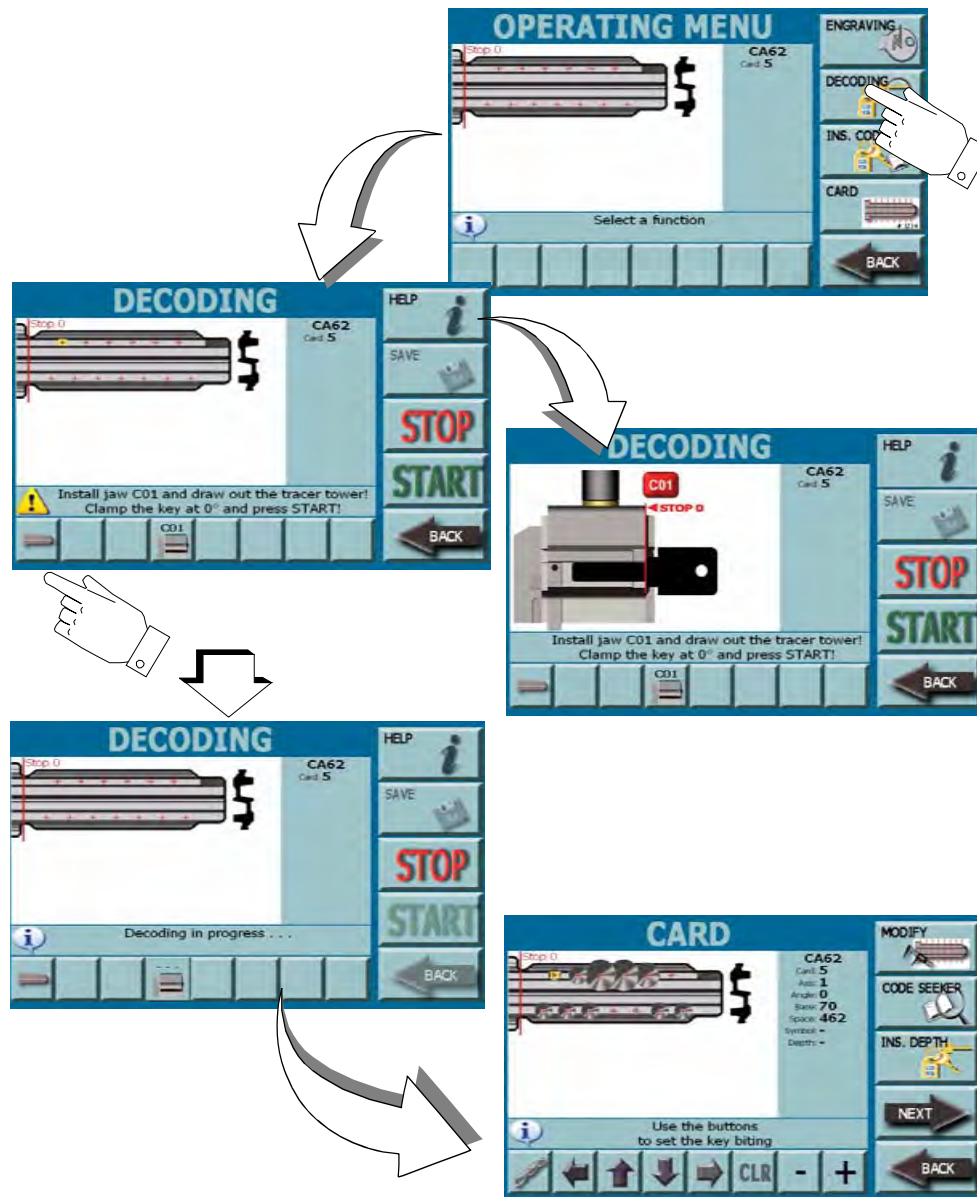
Warning:



Key must be inserted into jaw C1 with the head toward the rear of machine.

- before starting engraving it is possible to adjust the cutting depth by means of “+” or “-” keys;
- press the SAVE key to memorize the model that has been created;
- press the BACK key to cancel operation and come back;
- press the START key to start the cutting procedure;
- press the STOP key to stop started process.

## 9.1.3 DECODING



By means of the “DECODING” menu it is possible to start the reading procedure of a key to be reproduced on a key blank.

### HOW TO ACCESS THE SCREEN:

- From the “OPERATING MENU” page by selecting the “DECODING” key.

### PROCEDURE:

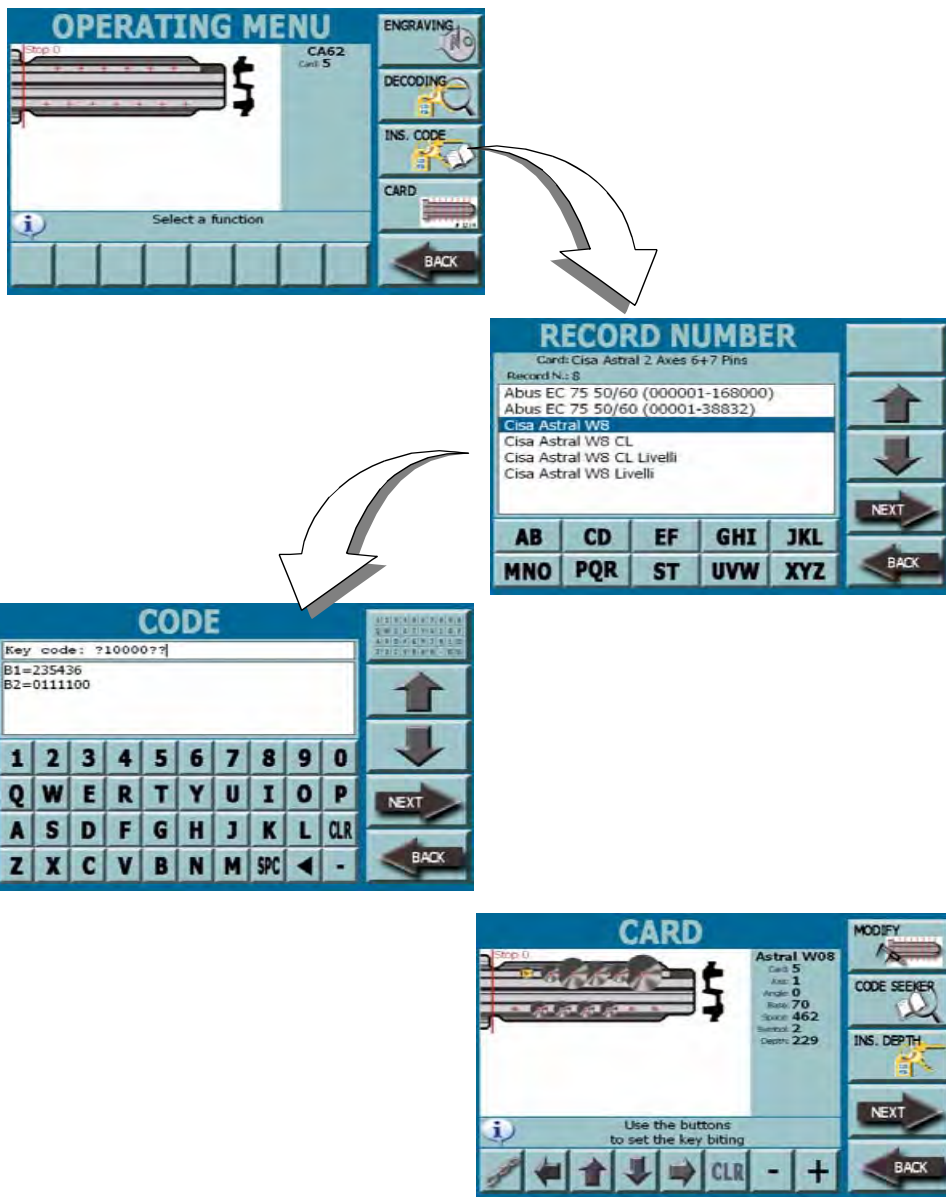
- select the “Select Bitting” key from the DECODING page to select the bitting of key to be read;
- install the jaw indicated by the warning message that appears on the screen;
- place the key and lock it as requested;

**Note:** press the HELP key to display the jaw to be installed and instructions for key correct positioning;

- lift the tracers tower;
- press the START key to start the key reading;
- press the STOP key to stop the process;
- press the BACK key to cancel the operation and come back;
- during the decoding process, the key reading status appears on the screen;
- at the end of the decoding operation remove the key from the jaw and insert the key blank as requested by the message that appears on the “information” field;
- the decoded key will appear on the screen;
- before starting the key cut, from this page it is possible to carry out the following operations:

- manually modify the key bitting by means of the MODIFY key
- modify the key bitting by means of a code entered into a current table, CODE SEEKER control
- modify the key bitting by means of a code entered into an own screen, INS. DEPTH control

9.1.4 INS. CODE



By means of the “INS. CODE” menu it is possible to modify the features of key to be cut according to a code entered into a current table.

HOW TO ACCESS THE SCREEN:

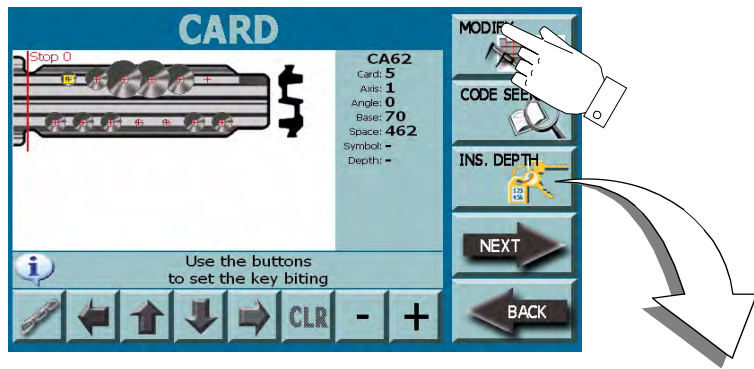
- From the “OPERATING MENU” page by selecting the “INS. CODE” key.

PROCEDURE:

- select the Record Number of the key to be cut from the menu that appears on the video and press NEXT to confirm;
- stroke part of the key code (e.g. 10000) and wait the system displays the possible combinations;
- select the interested code and press NEXT to confirm;
- the key with the bitting of selected code is displayed;
- before starting the key cut, from this page it is possible to carry out the following operations:
  - manually modify the key bitting by means of the MODIFY key
  - modify the key bitting by means of a code entered into a current table, CODE SEEKER control
  - modify the key bitting by means of a code entered into an own screen, INS. DEPTH control



9.1.4.1 MANUAL BITTING MODIFICATION



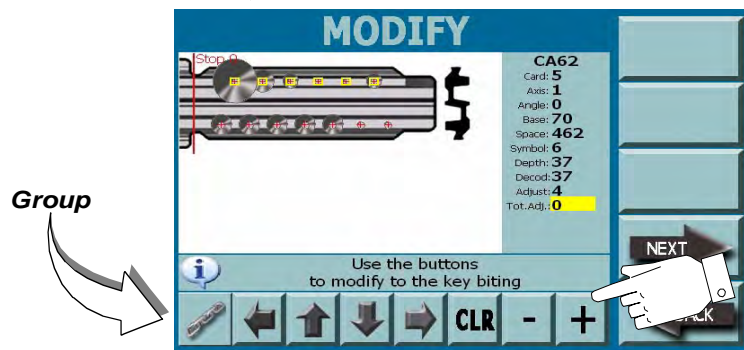
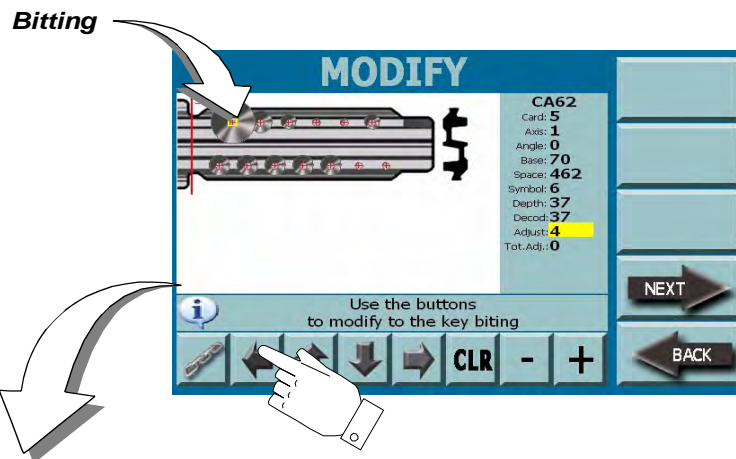
By means of the “MODIFY” menu it is possible to modify the bitting decoded by the system without respecting the current dimensions. The modifications will be made on the key blank at the cut moment.

HOW TO ACCESS THE SCREEN:

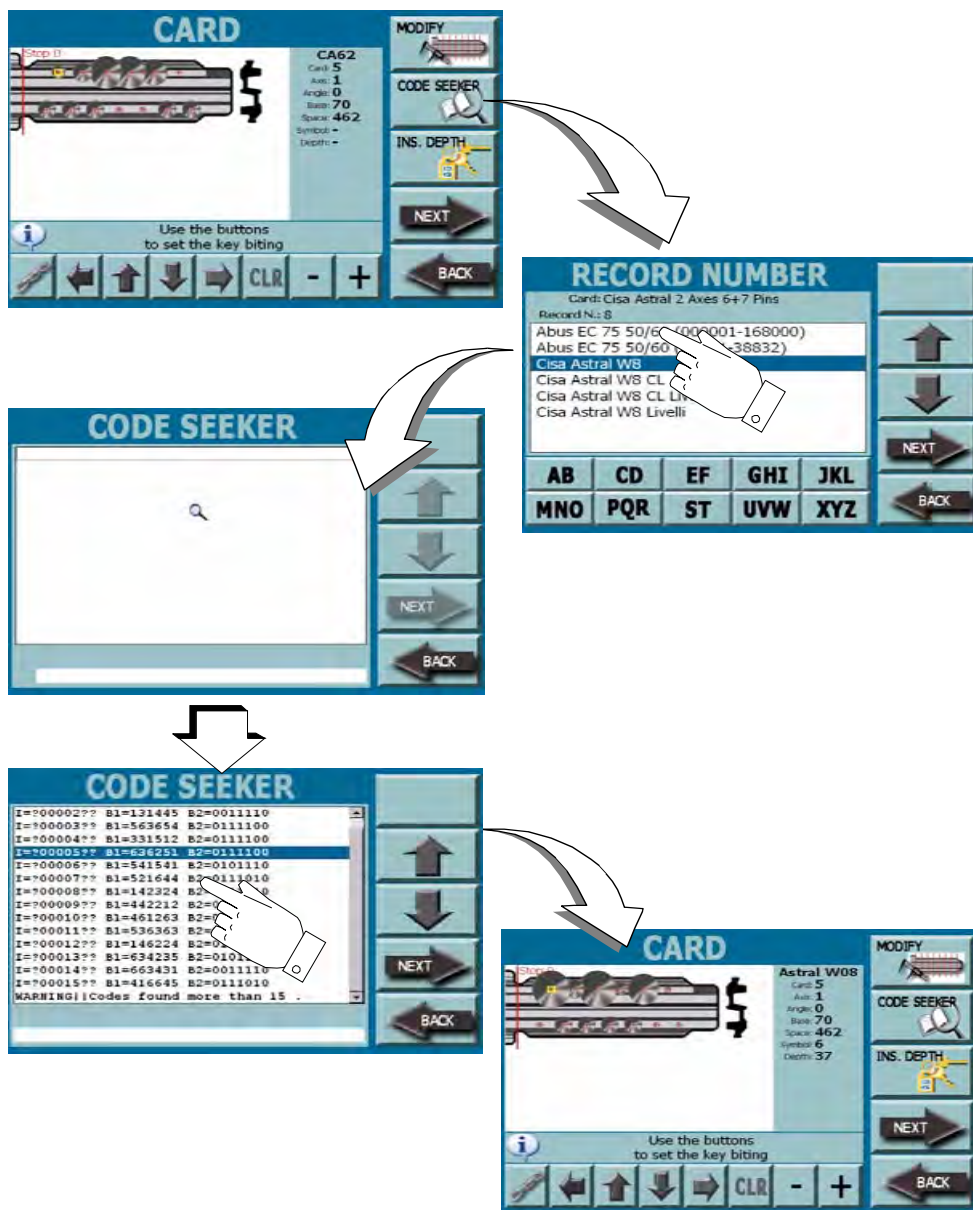
- From the “CARD” page of DECODING MENU by pressing the “MODIFY” key.

PROCEDURE:

- select one or more bittings by means of the arrow keys;
- adjust the selected bitting by means of the “+” and “-” keys;
- by means of the CHAIN key it is possible to select and to group two or more bittings to modify them, move them or dimension again them at the same time;
- press the CLR key to cancel modifications;
- press the NEXT key per confirm and go to the cut procedure;
- press the BACK key to cancel operation and come back;



9.1.4.2 BITTING MODIFICATION THROUGH CODE SEARCH



By means of the “CODE SEEKER” menu the system carries out a search according to a bitting entered into a current table. The changed bitting will be reproduced on the key blank at the cut moment.

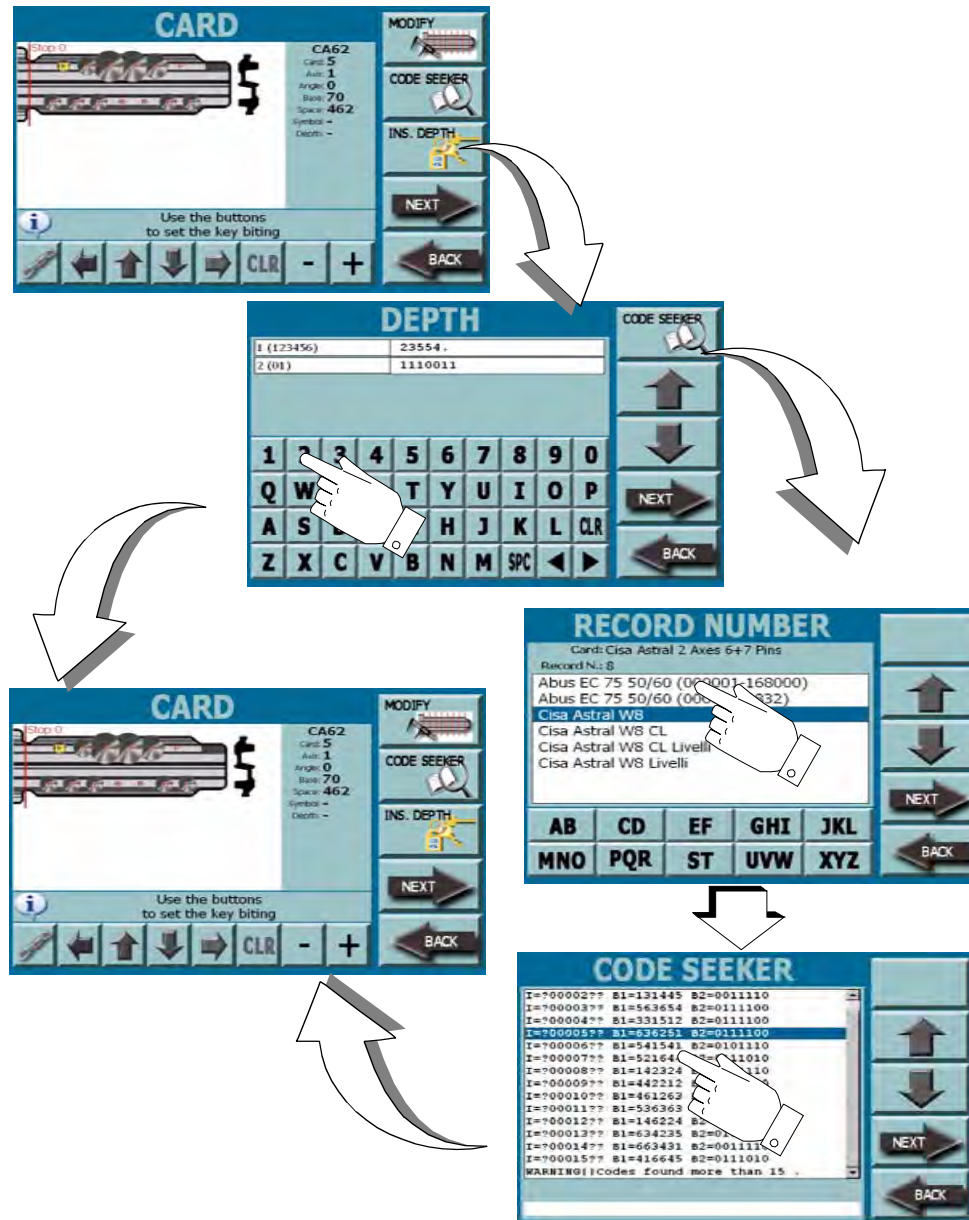
HOW TO ACCESS THE SCREEN:

- From the “CARD” page of DECODING MENU by pressing the “CODE SEEKER” key.

PROCEDURE:

- select the Record Number of the key to be cut from the menu that appears on the video and press NEXT to confirm;
- system searches all the codes combinations according to the selected Record Number;
- select the interested code from the list and press the NEXT key to confirm;
- the bitting changed according to the selected code will be displayed on the video;
- on this page it is possible to make changes to the bitting by using the arrow keys to select, group to unite and the “+” or “-” keys to adjust the depth of bitting;
- press the CLR key to cancel modifications;
- press the NEXT key to confirm and go to the cut procedure;
- press the BACK key to cancel operation and come back;

9.1.4.3 BITTING MODIFICATION THROUGH NEW CODE ENTRY



By means of the "INS. DEPTH" menu it is possible to insert or modify the bitting decoded by the system according to a code set by the user. Changed bitting will be reproduced on the key blank at the cut moment.

HOW TO ACCESS THE SCREEN:

- From the "CARD" page of OPERATING MENU by pressing the "INS. DEPTH" key.

PROCEDURE:

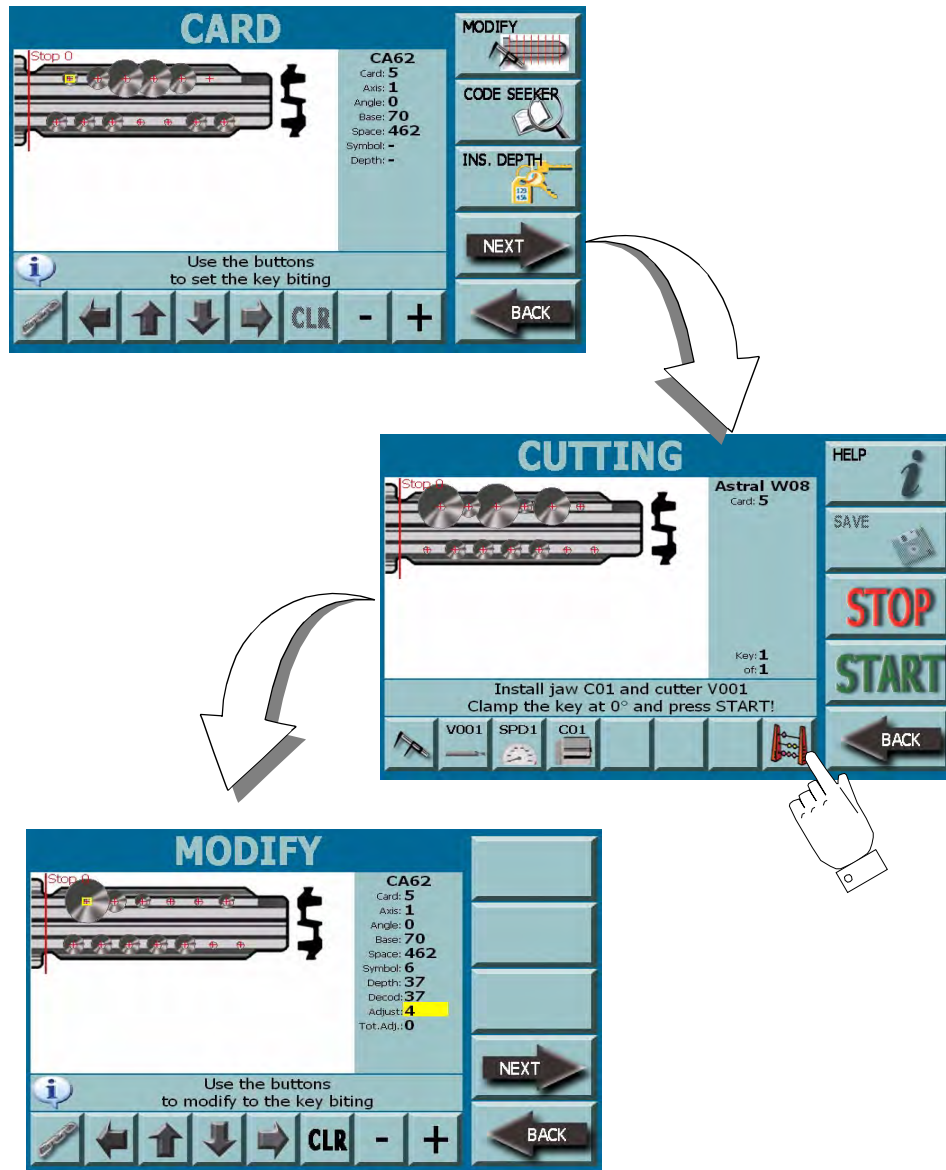
- system displays the bitting code read by the machine during the decoding procedure into fields 1 and 2 (not active);
- on the near active fields, for each line (1 and 2) it is possible to enter the interested bitting code to be reproduced on the key;
- press the NEXT key to confirm;

**Note:** if you do not know the complete bitting code it is possible to search it by means of the "CODE SEEKER" key and follow the procedure described in paragraph 9.1.4.2. on page 62.

- after having entered or selected interested code it is possible to accede to the key card;
- on this page it is possible to make other modifications to the bitting by using the arrow keys to select, group to unite and the "+" or "-" keys to adjust the depth of bitting;
- press the CLR key to cancel modifications;
- press the NEXT key to confirm and go to the cut procedure;
- press the BACK key to cancel operation and come back;

# KEY CUTTING

## 10.1.0 KEY DUPLICATION



On the “CUTTING” page it is possible to start the cutting procedure of selected key.

### HOW TO ACCESS THE SCREEN:

- From any “CARD” page by pressing the “NEXT” key.

### PROCEDURE:

- when the “CUTTING” page is opened follow the instructions displayed into the information field;
- install the jaw and the milling cutter requested by the system;
- insert and secure the key as indicated;
- select the cutting speed by means of the SPEED key;

**Note:** If the ADJUSTMENT key (on left bottom) is selected, the key will be cut according to modifications made into the MODIFY menu (see below). If it is not selected, the key will be cut according to standard manufacturer depths.

- set the number of keys to be reproduced by means of the ABACUS key;
- select the “MODIFY” key to accede to the optional menu for cut modification (see below);
- press the “START” key to continue the key cut;
- press the STOP key to stop the process;
- press the BACK key to cancel operation and come back.

### MODIFY MENU (OPTIONAL):

- use the arrow keys to select the single engraving;
- use the + and - keys to modify depth values;
- use the GROUP AXIS key (on left bottom) to modify all the engravings of one axis with same value.
- press the NEXT key to continue the key cut.

# MAINTENANCE

**Warning:**



**IMPORTANT!**

*Before carrying out any maintenance operation you must turn OFF the power and disconnect the power cord. The operator must make sure that nobody can energise to the machine.*

---

*When carrying out maintenance follow the instructions of this manual with care to prevent any injuries to people and damage to the equipment.*

---

*Maintenance must be carried out only by qualified personnel equipped with appropriate protective devices for safe work.*

---

*Always use original spare parts.*

---

## **11.1.0 GENERAL INFORMATION**

### **11.1.1 SKILLS OF MAINTENANCE PERSONNEL**

*Maintenance personnel must be qualified.*

#### **OPERATOR**

*The machine operator must be knowledgeable about machine operation.*

#### **PERSONNEL AUTHORIZED BY KEYLINE S.P.A.**

*Personnel from KEYLINE S.p.A. Technical Support Service or else officially authorized by KEYLINE S.p.A. Technical Support Service.*

## 11.1.2 TYPE OF MAINTENANCE

Maintenance can be subdivided into the following types, according to the operations involved:

- **Ordinary maintenance**
- **Complex maintenance**

### ORDINARY MAINTENANCE

Servicing operations that must be carried out periodically by the machine operator.

The purpose of ordinary maintenance is guarantee regular functioning of the machine and a consistent quality of the product.

The maintenance schedule may vary in relation to work or environmental conditions in the place of installation.

### COMPLEX MAINTENANCE

Complex maintenance consists of actions to be taken only when given conditions occur (break downs, failures, replacement of parts ).

Due to the complex nature of such actions and the special tools required, we recommend you should contact qualified personnel from or authorized by KEYLINE S.p.A..

## 11.2.0 ORDINARY MAINTENANCE

The following is a list of the most common ordinary maintenance activities that can be carried out by the machine operator. We recommend inspecting the machine periodically and replace worn parts.

### 11.2.1 CLEANING THE CUTTING TOOLS

At the end of every working day it is suggested to clean the machine from chips and scraps as indicated in paragraph 11.4.0. on page 73.



---

**The chips presence on the tools can cause errors during the calibraton and cutting procedures.**

### 11.2.2 CHECKING AND CLEANING THE FAN

It is suggested to periodically check the cleaning level of the air grids and make sure that there is no accumulated dust that could obstruct the air passage.

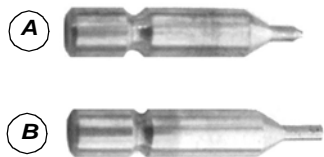
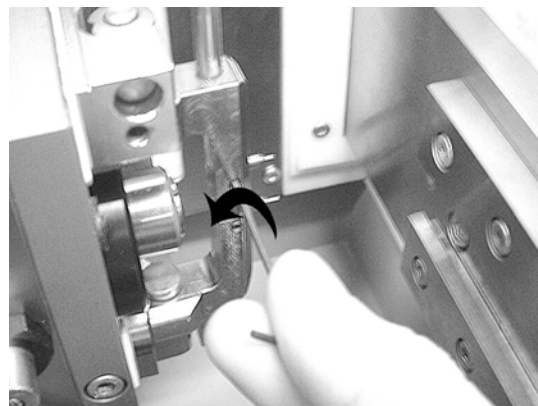
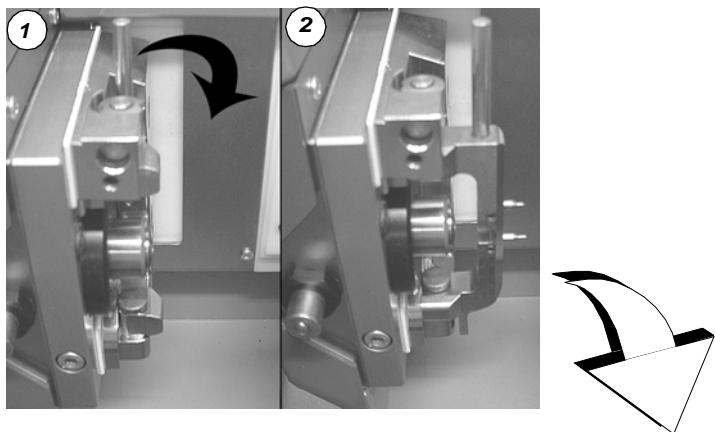


---

**Poor ventilation could cause a machine overheating and damage the components.**

11.3.0 COMPLEX MAINTENANCE

11.3.1 REPLACING THE TRACERS



SPARE PART DESCRIPTION	CODE	FREQUENCY
Conical Tracer Versa	RIC05352B	When required
Conical Tracer Versa	RIC05348B	When required

REQUIRED TOOLS

- 1 mm hexagon wrench

SAFETY WARNING



Before carrying out this operation press the main switch to turn OFF the power and disconnect the power cable from the mains.

PROCEDURE:

- Open the front cover and remove the tracers tower;
- Use the Allen key to loosen the safety nuts placed near the tracers;
- Remove the tracers delicately and slide them in the right direction;
- Insert the new tracers and make sure that rear parts do not protrude;

**Attention:** the tracer with CONICAL tip (A) must be placed on the top; the tracer with FLAT tip (B) must be placed on the bottom;

- Tighten the safety nuts. The tracers will automatically align in the correct position.

**Note:** IMPORTANT: after replacement it is necessary to calibrate the tracers to avoid errors during key cut (paragraph 7.3.0).



**11.3.2 REPLACING THE TOUCH SCREEN**

SPARE PART DESCRIPTION	CODE	FREQUENCY
MONITOR	RIC07642B	When required

**REQUIRED TOOLS**

- No tool is required

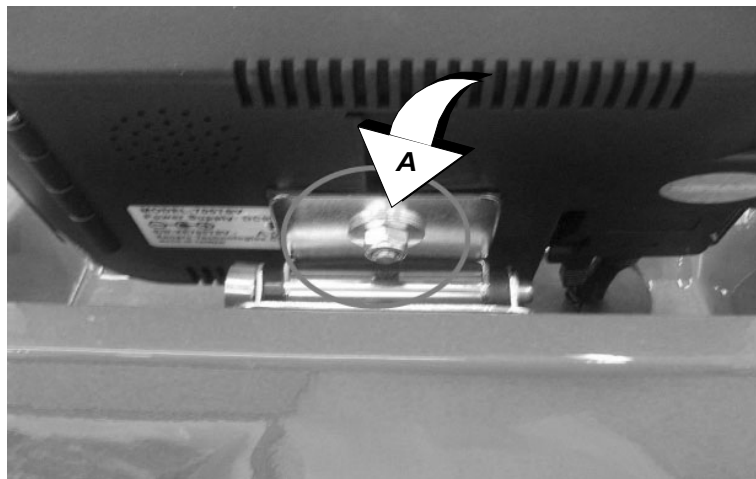
**SAFETY WARNING**



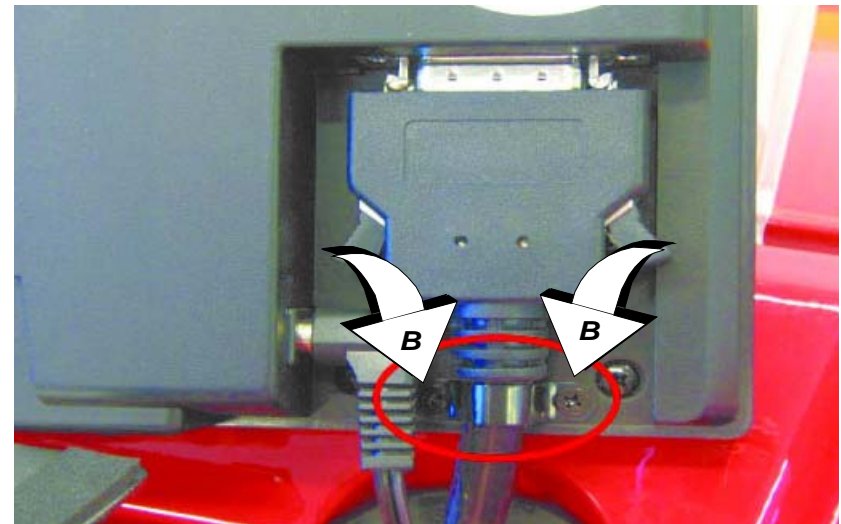
**Before carrying out this operation press the main switch to turn OFF the power and disconnect the power cable from the mains.**

**PROCEDURE:**

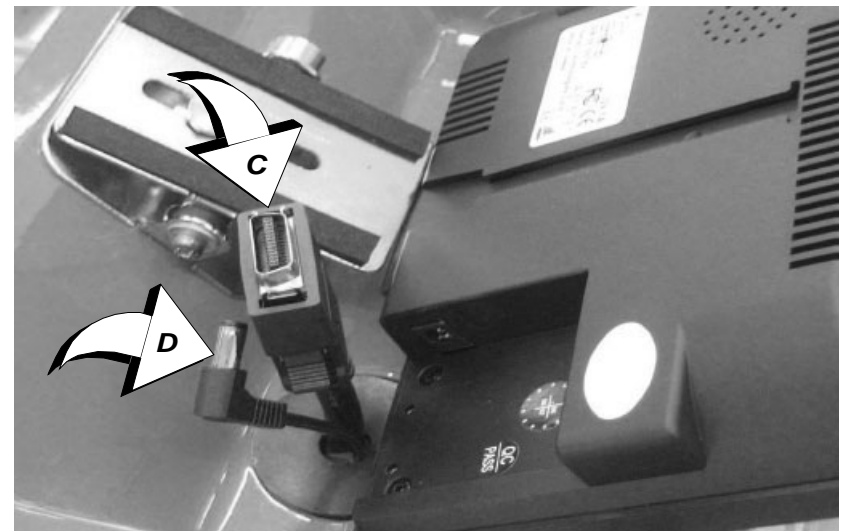
- Unscrew the nut (A);



- Remove 2 screws (B) from the wiring fixing stripe.



- Remove the power supply cable (C) and the serial cable (D), from the monitor. Replace the old monitor with the new one.



### 11.3.3 DHCP SETUP

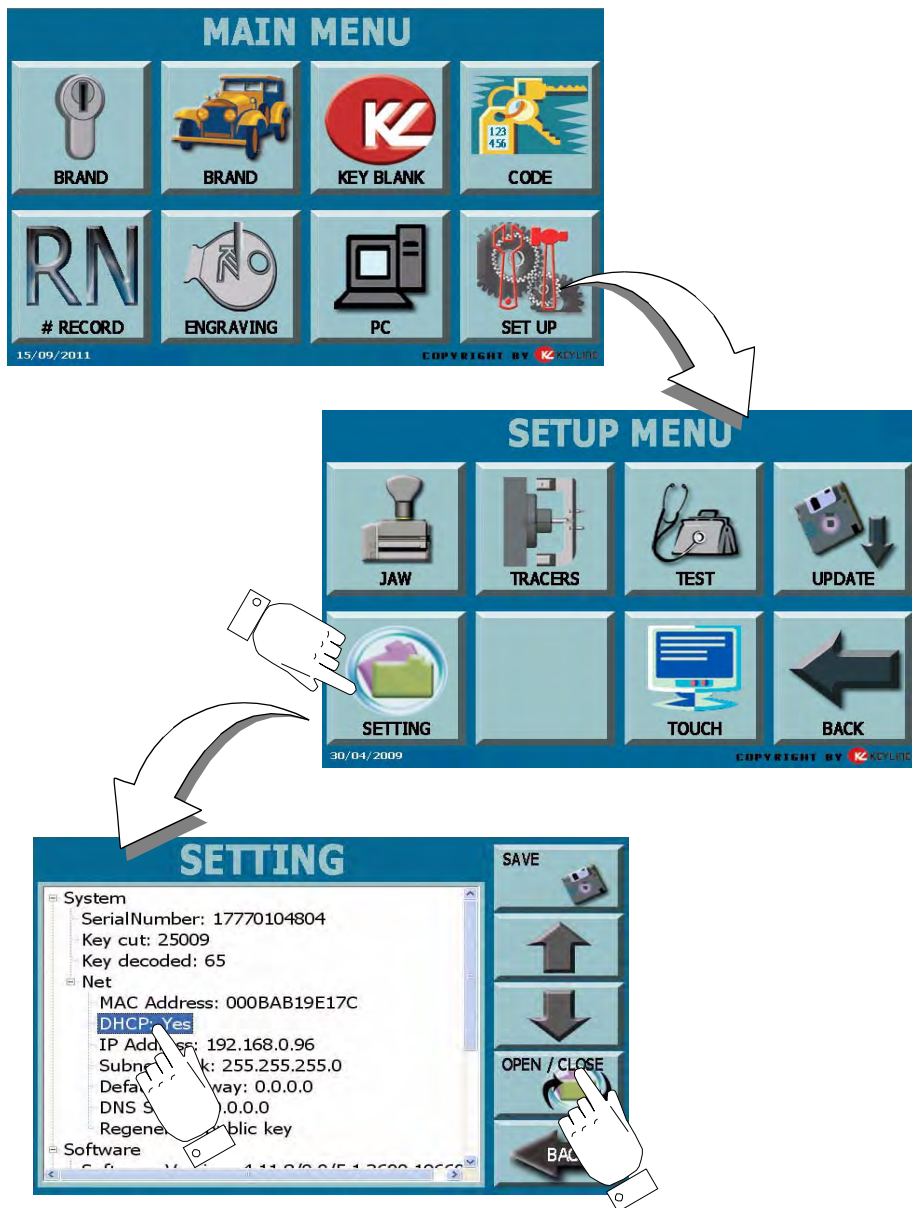
In order for the duplicator to be connected to an existing network (through a router), it shall be necessary to assign an automatic internal IP address to the machine, by setting the DHCP.

**HOW TO ACCESS THE SCREEN:**

- From the "MAIN MENU" by pressing the "SETUP" key.

**PROCEDURE:**

- From the SETUP MENU, choose SETTING
- From the SYSTEM section, select NET
- Touch the OPEN/CLOSE icon, then select DHCP
- Set the value to YES pressing the OPEN/CLOSE icon, then touch SAVE
- Restart the machine to end setup



## 11.3.4 REPLACING THE COMPACT FLASH

SPARE PART DESCRIPTION	CODE	FREQUENCY
COMPACT FLASH	RIC07519B	When required

### IMPORTANT

- To get the compact flash as a spare part, send to KeyLine the serial nr. of the machine and MAC-ADDRESS.

### REQUIRED TOOLS

- Torx Screwdriver

### SAFETY WARNING



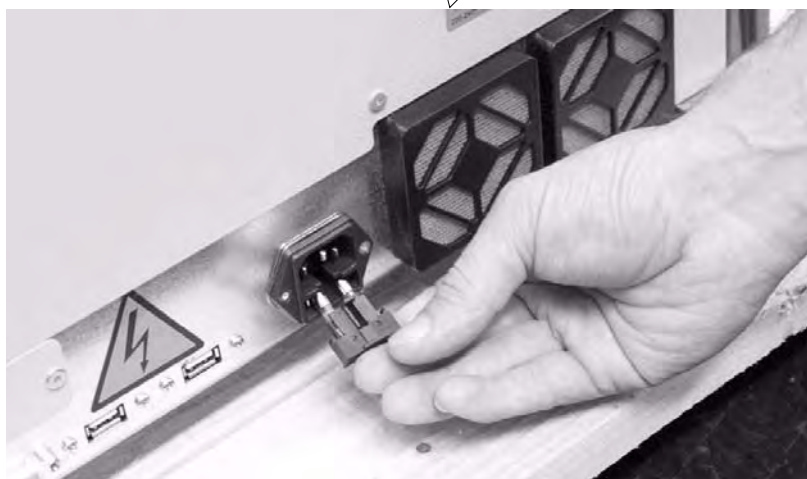
**Before carrying out this operation press the main switch to turn OFF the power and disconnect the power cable from the mains.**

---

### PROCEDURE:

- Remove the two screws of the protection;
- Remove the old flash and put in the new compact flash;
- Restart the machine, calibrate all the jaws and tracers again.

11.3.5 INSPECTING AND REPLACING THE FUSES



SPARE PART DESCRIPTION	CODE	FREQUENCY
Slow fuse 6,3 A 5x20	RIC02990B	When required

The **VERSA** key duplicating machine is equipped with 2 fuses located in the power unit next to the switch, which have the purpose to protect the machine from surges and short circuit.

Type of fuses:

If the machine fails to start after you have turned on the main switch, we recommend you inspect the fuses in the power unit and replace them if needed.

**REQUIRED TOOLS WHEN REPLACING THE FUSES**

- Tester, ohm meter, multimeter etc (to measure fuses' continuity).

**SAFETY WARNING**



**Before carrying out this operation press the main switch to turn OFF the power and disconnect the power cable from the mains.**

**PROCEDURE:**

- press slightly on the tongues of the fuse carrier to pull it out from its seat;
- inspect the fuses;
- replace any damaged fuse with a new one of the same capacity (Amperage) and type (slow);
- put back the fuse carrier into its seat.

## 11.4.0 CLEANING THE MACHINE

*At the end of each working day clean the machine removing scrap and burrs to ensure proper functioning of the machine and to prevent any damage to its parts.*

*The VERSA key duplicating machine is equipped with a container to collect scrap and burrs generated during key cutting operations.*

*In addition to a through cleaning of all machine parts we also recommend emptying the container as needed.*



***To remove the container you need to unfasten and pull out the jaw.***

---

**Warning:**



***Do not clean the machine with compressed air.***

---

## DISMANTLING AND DISPOSAL

### 12.0.1 WASTE DISPOSAL

*The disposal of waste generated by the machine shall be managed in compliance with the legislation in force in the user's country.*

*In Europe, machine shop rejections are classified as special waste and are assimilated to metal wool when it comes to managing municipal solid waste (MSW).*

*Such waste must be disposed of according to the legislation in force in the user's country.*

*If machine shop rejections have been contaminated or contain toxic or harmful substances they are considered as toxic -harmful waste and disposed of accordingly in compliance with the legislation in force.*



***The user is responsible for correct waste management.***

---

### 12.0.2 DISPOSAL OF THE PACKING MATERIAL

*Our key duplicating machines are delivered in cardboard packages that can be recycled as packing material.*

*In case of disposal, packing material is treated as municipal solid waste (MSW) and is usually collected together with paper materials.*

*Protective covers are made of polystyrene and must be sent to suitable waste disposal sites as other municipal solid waste of the same type.*

### 12.1.0 THE WEEE DIRECTIVE

When disposal becomes necessary, the **VERSA** appliance is to be considered as belonging to the WEEE category (Waste Electrical and Electronic Equipment).

**KEYLINE S.p.A.** has always taken great care to protect the environment and complies with the legislative decree on WEEE that has been in force since 13/08/2005. As a consequence, in accordance with the prescriptions of directive 2002/96/CE, this appliance cannot be disposed of as household waste (in compliance with the special symbol shown below).



- Whoever disposes of this appliance illegally or as household waste will be subject to the sanctions foreseen by current national legislation.
- According to the provisions of current national legislation, this appliance cannot be disposed of as household waste. Therefore, at the end of its lifecycle, after having carried out the operations that are necessary for correct disposal, the appliance must be taken to one of the differentiated waste collection centres for electrical and electronic waste from domestic households. Refer to the collection centre in your own town, which will guarantee the functionality, accessibility and suitability of the differentiated collection systems, so that the final holder and distributors can take the waste that they produce in their area to collection centres, free of charge.

